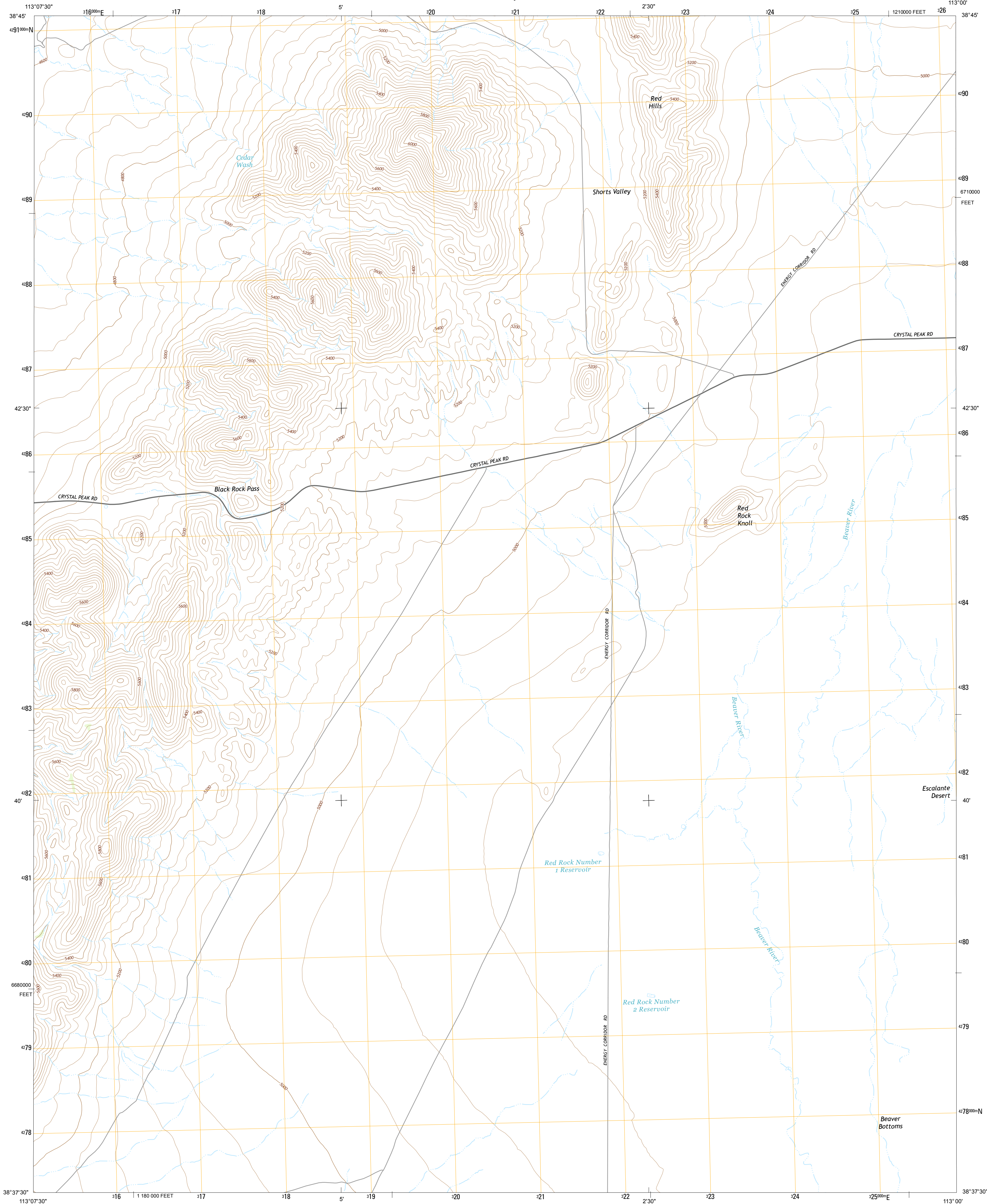




U.S. DEPARTMENT OF THE INTERIOR  
U.S. GEOLOGICAL SURVEY



RED ROCK KNOLL QUADRANGLE  
UTAH-MILLARD CO.  
7.5-MINUTE SERIES

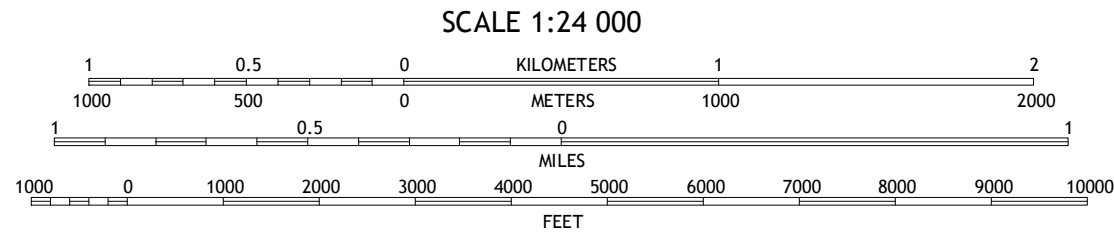


Produced by the United States Geological Survey  
North American Datum of 1983 (NAD83)  
World Geodetic System of 1984 (WGS84). Projection and  
1 000-meter grid: Universal Transverse Mercator, Zone 12S  
10 000-foot ticks: Utah Coordinate System of 1983 (central  
zone)

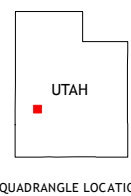
This map is not a legal document. Boundaries may be  
generalized for this map scale. Private lands within government  
reservations may not be shown. Obtain permission before  
entering private lands.

Imagery.....NAIP, June 2011  
Roads.....HERE, ©2013  
Names.....GNIS, 2013  
Hydrography.....National Hydrography Dataset, 2011  
Contours.....National Elevation Dataset, 1999  
Boundaries.....Multiple sources; see metadata file 1972-2013  
Public Land Survey System.....BLM, 2011

U.S. National Grid  
100,000-m Square ID  
UH  
Grid Zone Designation  
12S



CONTOUR INTERVAL 40 FEET  
NORTH AMERICAN VERTICAL DATUM OF 1988  
This map was produced to conform with the  
National Geospatial Program US Topo Product Standard, 2011.  
A metadata file associated with this product is draft version 0.6.16



ROAD CLASSIFICATION  
Expressway.....  
Secondary Hwy.....  
Ramp.....  
Interstate Route.....  
US Route.....  
State Route.....  
Local Connector.....  
Local Road.....  
4WD.....

1	2	3
4	5	6
7	8	9

1 Sevier Lake SW  
2 Headlight Mountain  
3 Cat Canyon  
4 Iron Mine Pass  
5 Black Rock  
6 High Rock  
7 Lime Mountain  
8 Read

RED ROCK KNOLL, UT  
2014

