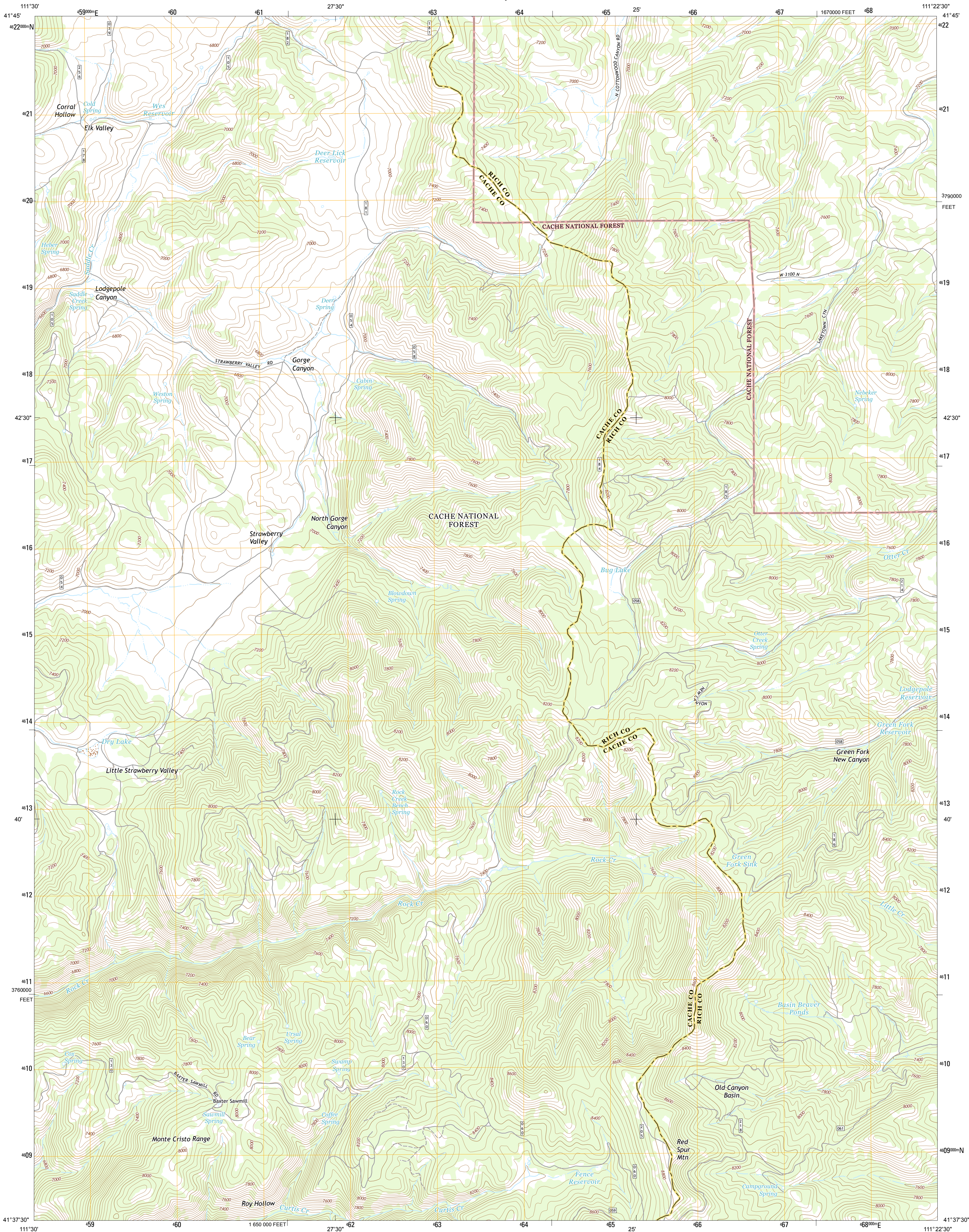




U.S. DEPARTMENT OF THE INTERIOR  
U.S. GEOLOGICAL SURVEY



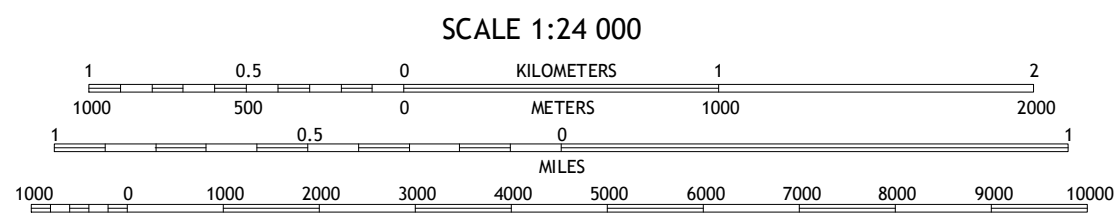
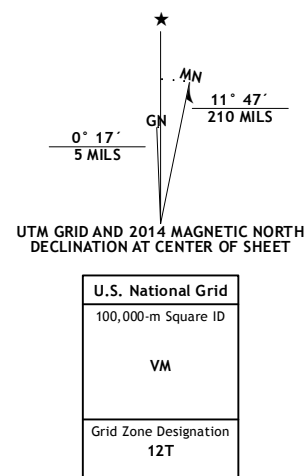
RED SPUR MOUNTAIN QUADRANGLE  
UTAH  
7.5-MINUTE SERIES



Produced by the United States Geological Survey  
North American Datum of 1983 (NAD83)  
World Geodetic System of 1984 (WGS84) Projection and  
1 000-meter grid: Universal Transverse Mercator, Zone 12T  
10 000-foot ticks: Utah Coordinate System of 1983 (north zone)

This map is not a legal document. Boundaries may be  
generalized for this map scale. Private lands within government  
reservations may not be shown. Obtain permission before  
entering private lands.

Imagery.....NAIP, August 2011  
Roads.....HERE, ©2013  
Roads within US Forest Service Lands.....FS Topo Data  
with limited Forest Service updates, 2013  
Names.....GNIS, 2013  
Hydrography.....National Hydrography Dataset, 2011  
Contours.....National Elevation Dataset, 2002  
Boundaries.....Multiple sources: see metadata file 1972-2013  
Public Land Survey System.....BLM, 2011



CONTOUR INTERVAL 40 FEET  
NORTH AMERICAN VERTICAL DATUM OF 1988  
This map was produced to conform with the  
National Geospatial Program US Topo Product Standard, 2011.  
A metadata file associated with this product is draft version 0.6.16

1	2	3
4	5	6
7	8	9

ADJOINING QUADRANGLES

1 Temple Peak  
2 Meadowville  
3 Laketown  
4 Boulder Mountain  
5 Old Canyon  
6 Hardware Ranch  
7 Curtis Ridge  
8 Birch Creek Reservoirs

ROAD CLASSIFICATION

Expressway  
Secondary Hwy  
Ramp

Interstate Route  
FS Primary Route

Local Connector  
Local Road  
4WD

US Route  
FS Passenger Route

State Route  
FS High Clearance Route

Check with local Forest Service unit  
for current travel conditions and restrictions.

RED SPUR MOUNTAIN, UT  
2014

