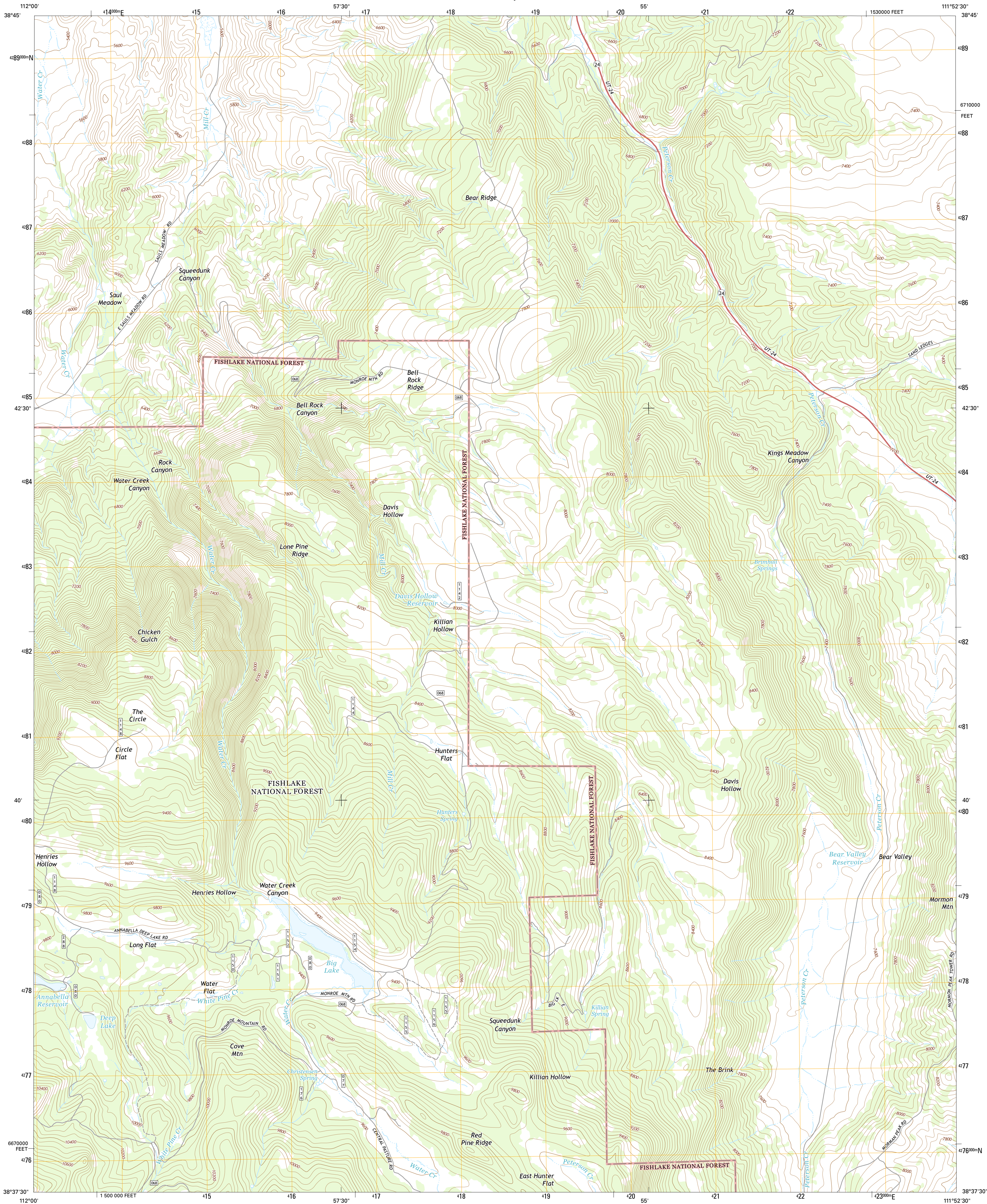




U.S. DEPARTMENT OF THE INTERIOR
U.S. GEOLOGICAL SURVEY



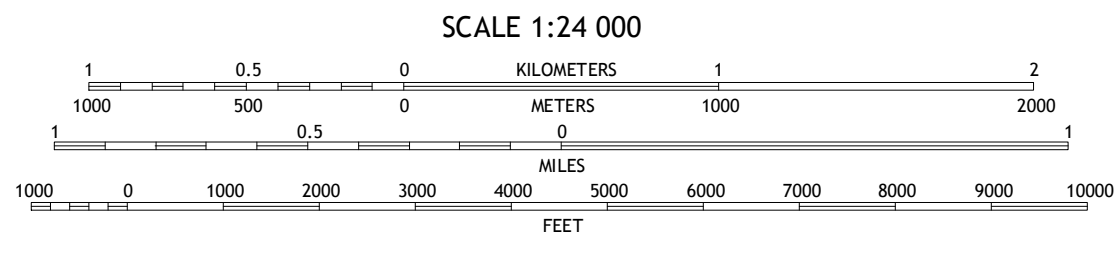
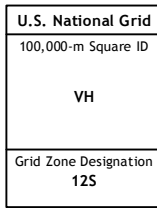
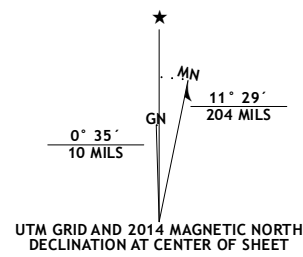
WATER CREEK CANYON QUADRANGLE
UTAH-SEVIER CO.
7.5-MINUTE SERIES



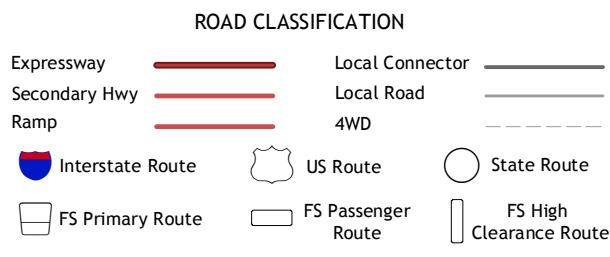
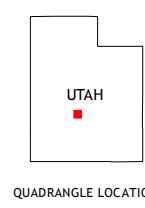
Produced by the United States Geological Survey
North American Datum of 1983 (NAD83)
World Geodetic System of 1984 (WGS84). Projection and
1 000-meter grid: Universal Transverse Mercator, Zone 12S
10 000-foot ticks: Utah Coordinate System of 1983 (central
zone)

This map is not a legal document. Boundaries may be
generalized for this map scale. Private lands within government
reservations may not be shown. Obtain permission before
entering private lands.

Imagery.....NAIP, June 2011 - August 2011
Roads within US Forest Service Lands.....HERE, ©2013
with limited Forest Service updates, 2013
Names.....National Hydrography Dataset, 2011
Contours.....National Elevation Dataset, 2000
Boundaries.....Multiple sources; see metadata file 1972 - 2013
Public Land Survey System.....BLM, 2011



This map was produced to conform with the
National Geospatial Program US Topo Product Standard, 2011.
A metadata file associated with this product is draft version 0.6.16



1	2	3
4	5	6
7	8	9

ADJOINING QUADRANGLES

1 Richfield
2 Sigurd
3 Rex Reservoir
4 Annabella
5 Boobe Hole Reservoir
6 Monroe Peak
7 Koshareh
8 Burville

Check with local Forest Service unit
for current travel conditions and restrictions.

WATER CREEK CANYON, UT
2014

