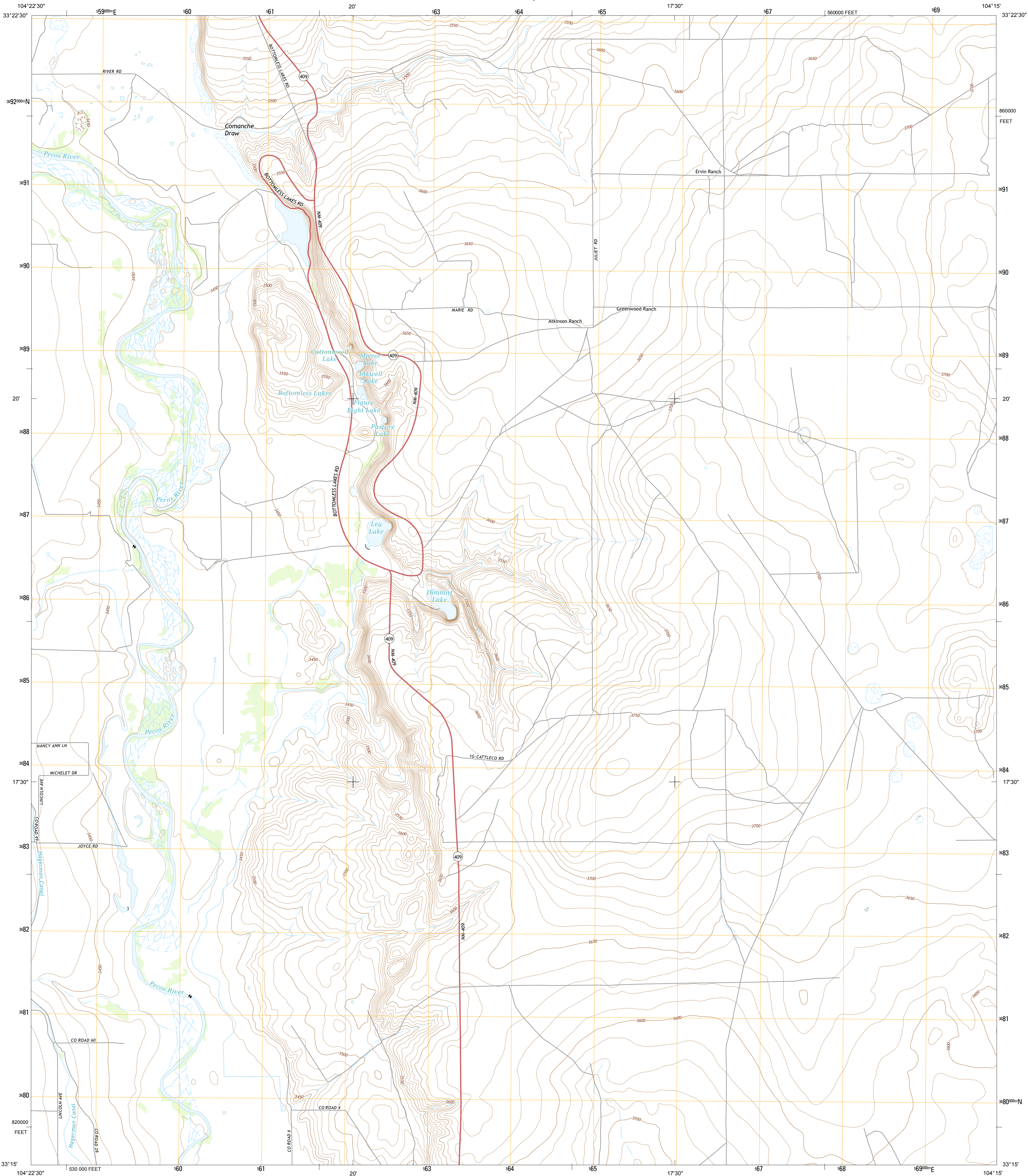




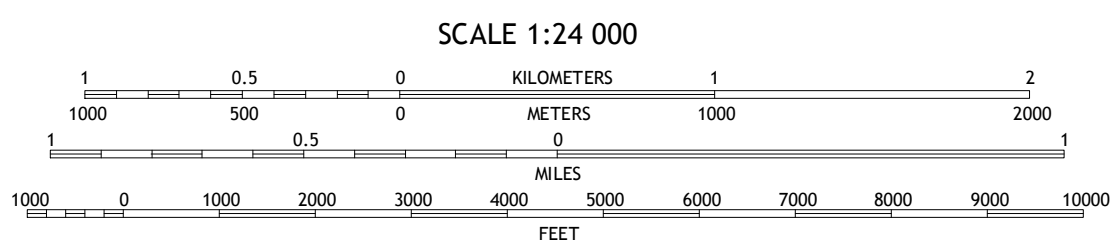
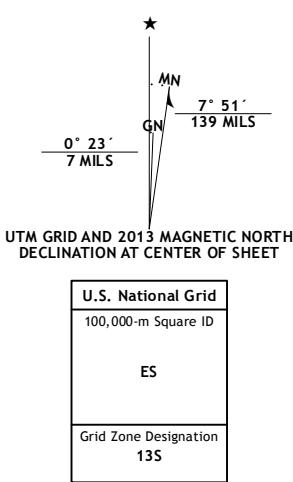
U.S. DEPARTMENT OF THE INTERIOR  
U. S. GEOLOGICAL SURVEY



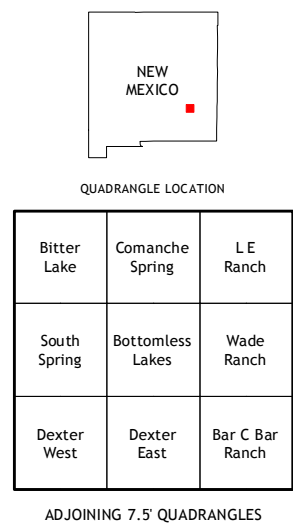
BOTTOMLESS LAKES QUADRANGLE  
NEW MEXICO-CHAVES CO.  
7.5-MINUTE SERIES



**Produced by the United States Geological Survey**  
North American Datum of 1983 (NAD83)  
World Geodetic System of 1984 (WGS84) Projection and  
1000-meter grid: Universal Transverse Mercator, Zone 13S  
10 000-foot ticks: New Mexico Coordinate System of 1983 (east zone)  
  
This map is not a legal document. Boundaries may be generalized for this map scale. Private lands within government reservations may not be shown. Obtain permission before entering private lands.  
  
Imagery.....NAIP, May 2011  
Roads.....©2006-2013 TomTom  
Names.....GNIS, 2013  
Hydrography.....National Hydrography Dataset, 2011  
Contours.....National Elevation Dataset, 1999  
Boundaries.....Census, IBWC, IBC, USGS, 1972 - 2012  
Public Land Survey System.....BLM, 2011



CONTOUR INTERVAL 10 FEET  
NORTH AMERICAN VERTICAL DATUM OF 1988  
  
This map was produced to conform with the  
National Geospatial Program US Topo Product Standard, 2011.  
A metadata file associated with this product is draft version 0.6.15



**ROAD CLASSIFICATION**  
Expressway  
Secondary Hwy  
Ramp  
Interstate Route  
Local Connector  
Local Road  
4WD  
US Route  
State Route

Bitter Lake	Comanche Spring	L E Ranch
South Spring	Bottomless Lakes	Wade Ranch
Dexter West	Dexter East	Bar C Bar Ranch

**BOTTOMLESS LAKES, NM**  
2013

