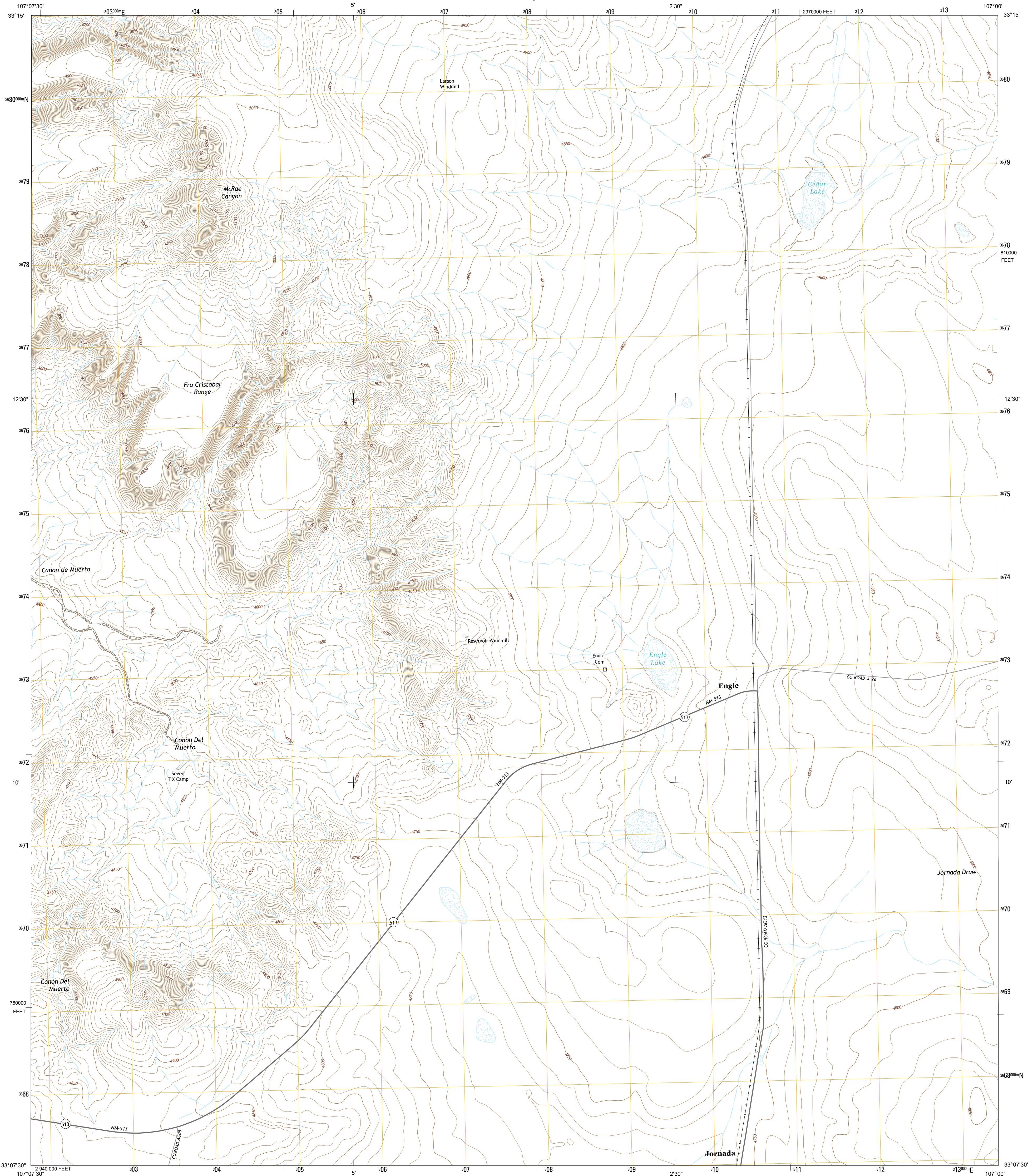




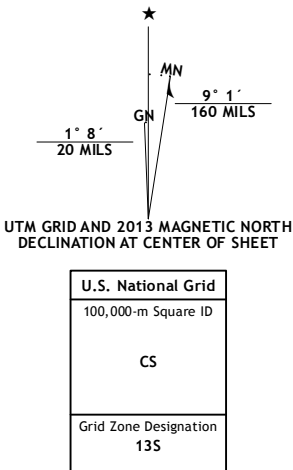
U.S. DEPARTMENT OF THE INTERIOR
U. S. GEOLOGICAL SURVEY



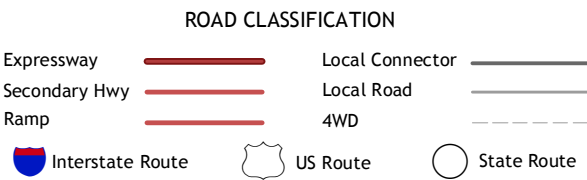
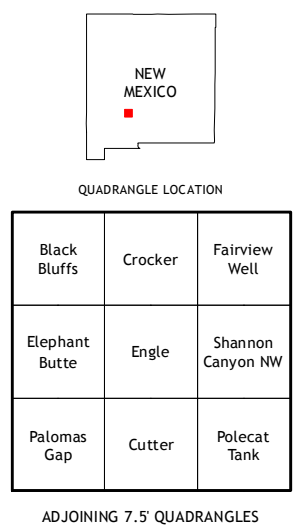
ENGLE QUADRANGLE
NEW MEXICO-SIERRA CO.
7.5-MINUTE SERIES



Produced by the United States Geological Survey
North American Datum of 1983 (NAD83)
World Geodetic System of 1984 (WGS84). Projection and
1 000-meter grid: Universal Transverse Mercator, Zone 13S
10 000-foot ticks: New Mexico Coordinate System of 1983 (west
zone)
This map is not a legal document. Boundaries may be
generalized for this map scale. Private lands within government
reservations may not be shown. Obtain permission before
entering private lands.
Imagery.....NAIP, May 2011
Roads.....©2006-2013 TomTom
Names.....GNIS, 2013
Hydrography.....National Hydrography Dataset, 2011
Contours.....National Elevation Dataset, 2000
Boundaries.....Census, IBWC, IBC, USGS, 1972 - 2012
Public Land Survey System.....BLM, 2011



CONTOUR INTERVAL 10 FEET
NORTH AMERICAN VERTICAL DATUM OF 1988
This map was produced to conform with the
National Geospatial Program US Topo Product Standard, 2011.
A metadata file associated with this product is draft version 0.6.15



ENGLE, NM
2013

