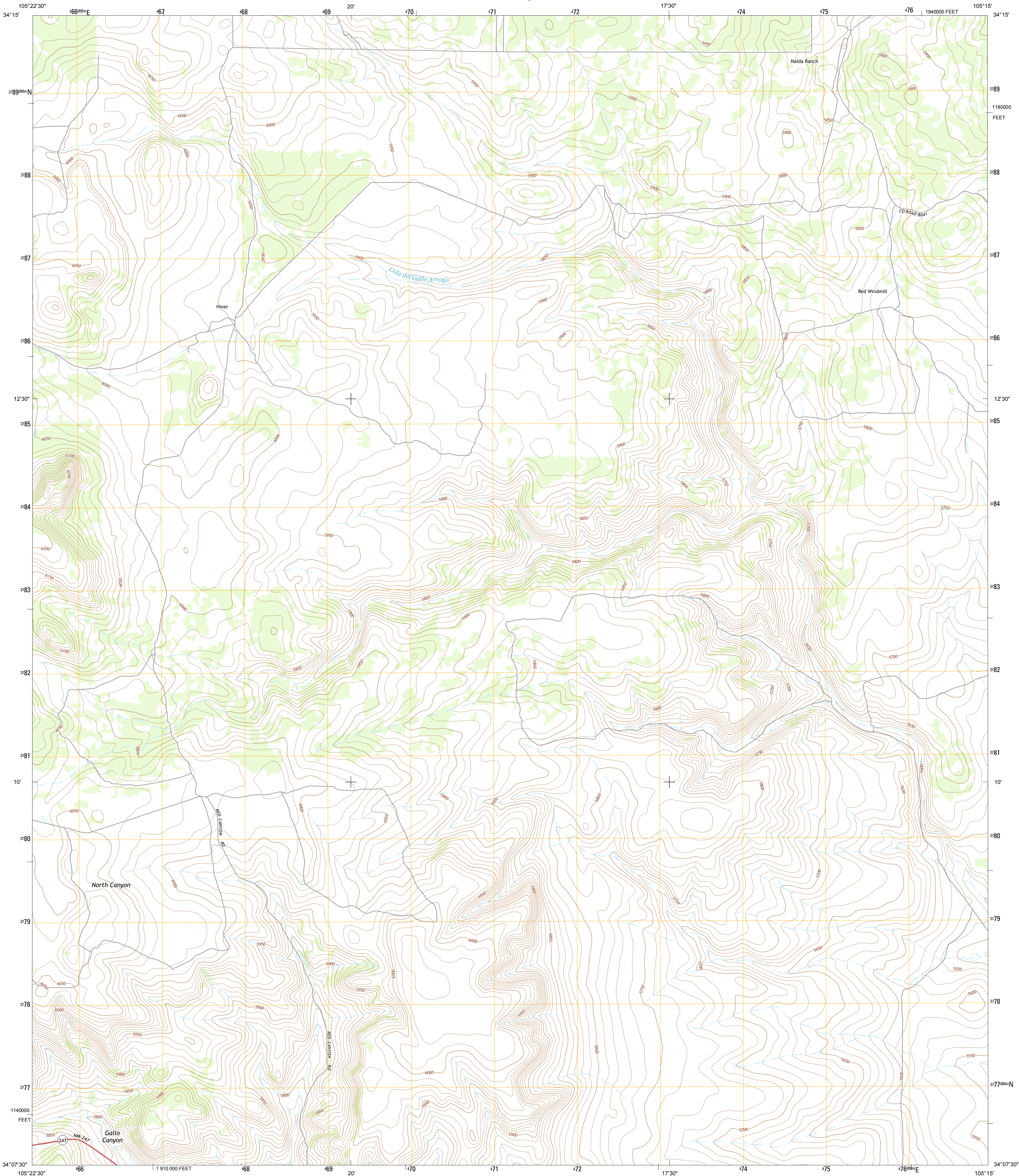




U.S. DEPARTMENT OF THE INTERIOR
U. S. GEOLOGICAL SURVEY



GALLO SPRING CANYON NE QUADRANGLE
NEW MEXICO-LINCOLN CO.
7.5-MINUTE SERIES



Produced by the United States Geological Survey
North American Datum of 1983 (NAD83)
World Geodetic System of 1984 (WGS84), Projection and
1 000-meter grid; Universal Transverse Mercator, Zone 13S
10 000-foot ticks; New Mexico Coordinate System of 1983
(central zone)

This map is not a legal document. Boundaries may be
generalized for this map scale. Private lands within government
reservations may not be shown. Obtain permission before
entering private lands.

Imagery.....NAIP, May 2011
Roads.....©2006-2013 TomTom
Names.....GNIS, 2013
Hydrography.....National Hydrography Dataset, 2011
Contours.....National Elevation Dataset, 1999
Boundaries.....Census, IBWC, IBC, USGS, 1972- 2012
Public Land Survey System.....BLM, 2011

UTM GRID AND 2013 MAGNETIC NORTH
DECLINATION AT CENTER OF SHEET

0° 11' 3" N
8° 22' 14" N
149 MILS

U.S. National Grid
100,000-m Square ID
0T
Grid Zone Designation
13S

SCALE 1:24 000

1 0.5 0 0.5 1 2
1000 500 0 1000 2000
KILOMETERS
1 0.5 0 0.5 1
1000 0 1000 2000 3000 4000 5000 6000 7000 8000 9000 10000
METERS
0
1
MILES
FEET

CONTOUR INTERVAL 10 FEET
NORTH AMERICAN VERTICAL DATUM OF 1988

This map was produced to conform with the
National Geospatial Program US Topo Product Standard, 2011.
A metadata file associated with this product is draft version 0.6.15



Camaleon Draw West	Camaleon Draw East	Gallo Hill SW
Gallo Spring Canyon	Gallo Spring Canyon NE	Cowboy Mesa NW
Red Bluff Draw West	Red Bluff Draw East	Cowboy Mesa SW

ROAD CLASSIFICATION

Expressway
Secondary Hwy
Ramp
Interstate Route
Local Connector
Local Road
4WD
US Route
State Route

**GALLO SPRING CANYON NE, NM
2013**

