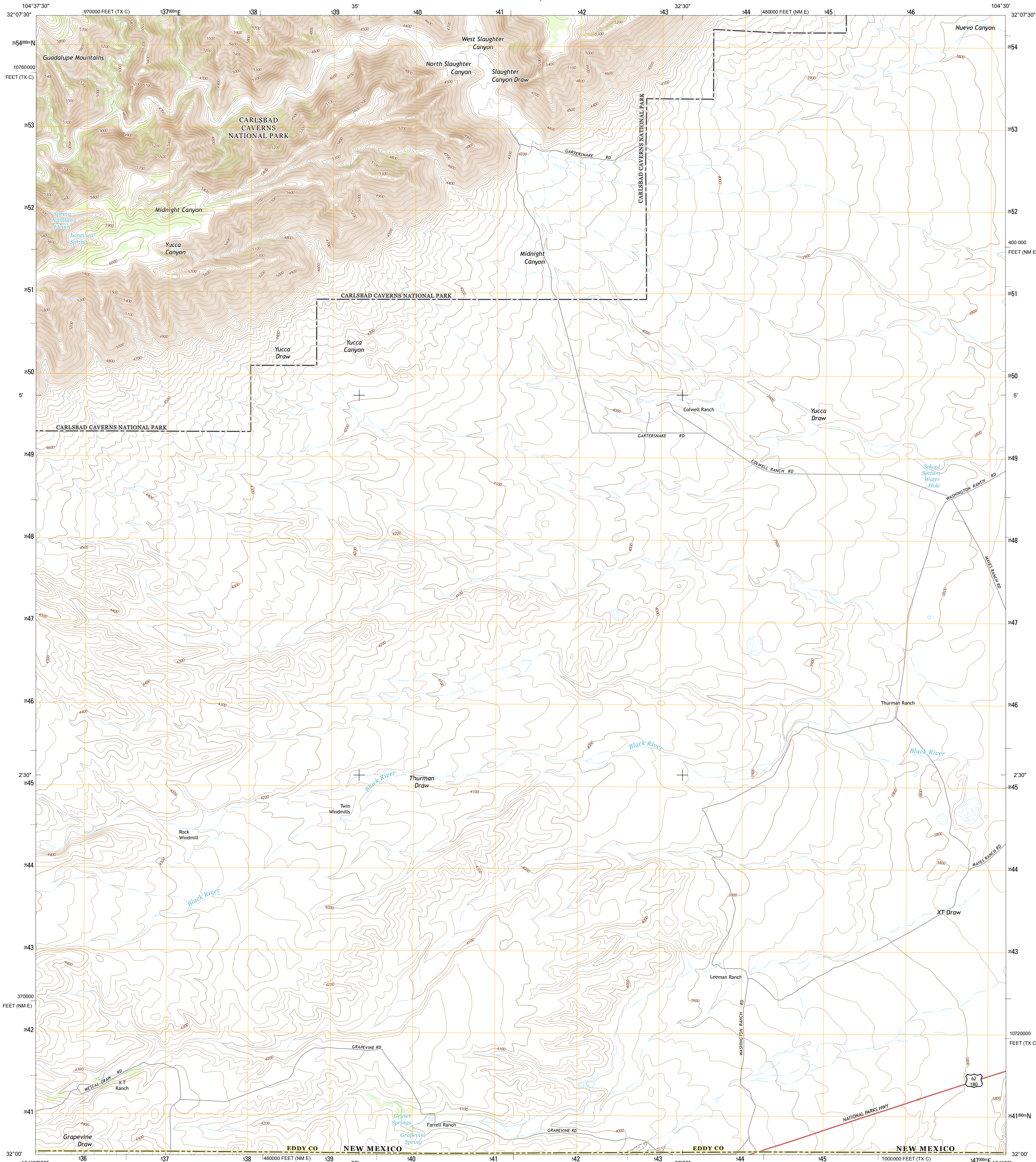




U.S. DEPARTMENT OF THE INTERIOR
U. S. GEOLOGICAL SURVEY



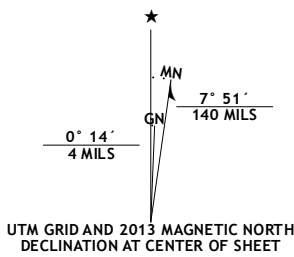
GRAPEVINE DRAW QUADRANGLE
NEW MEXICO-TEXAS
7.5-MINUTE SERIES



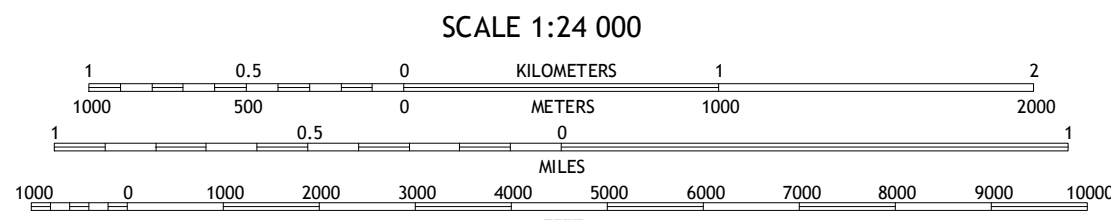
Produced by the United States Geological Survey
North American Datum of 1983 (NAD83)
World Geodetic System of 1984 (WGS84), Projection and
1 000-meter grid: Universal Transverse Mercator, Zone 13S
10 000-foot ticks: New Mexico Coordinate System of 1983 (east
zone), Texas Coordinate System of 1983 (central zone)

This map is not a legal document. Boundaries may be
generalized for this map scale. Private lands within government
reservations may not be shown. Obtain permission before
entering private lands.

Imagery.....NAIP, May 2011
Roads.....©2006-2013 TomTom
Names.....National Hydrography Dataset, 2011
Hydrography.....National Elevation Dataset, 2002
Contours.....Census, IBWC, IBC, USGS, 1972-2012
Boundaries.....Public Land Survey System.....BLM, 2011



U.S. National Grid
100,000-m Square ID
ER
Grid Zone Designation
13S



CONTOUR INTERVAL 20 FEET
NORTH AMERICAN VERTICAL DATUM OF 1988
This map was produced to conform with the
National Geospatial Program US Topo Product Standard, 2011.
A metadata file associated with this product is draft version 0.6.15



Queen	Serpentine	Carlsbad
Gunsight	Grapevine	Rattlesnake
Canyon	Draw	Springs
Independence	South	Alligator
Spring	Becor	Draw
Canyon		

ADJOINING 7.5 QUADRANGLES

ROAD CLASSIFICATION	
Expressway	Local Connector
Secondary Hwy	Local Road
Ramp	4WD
Interstate Route	US Route
	State Route

GRAPEVINE DRAW, NM-TX
2013

