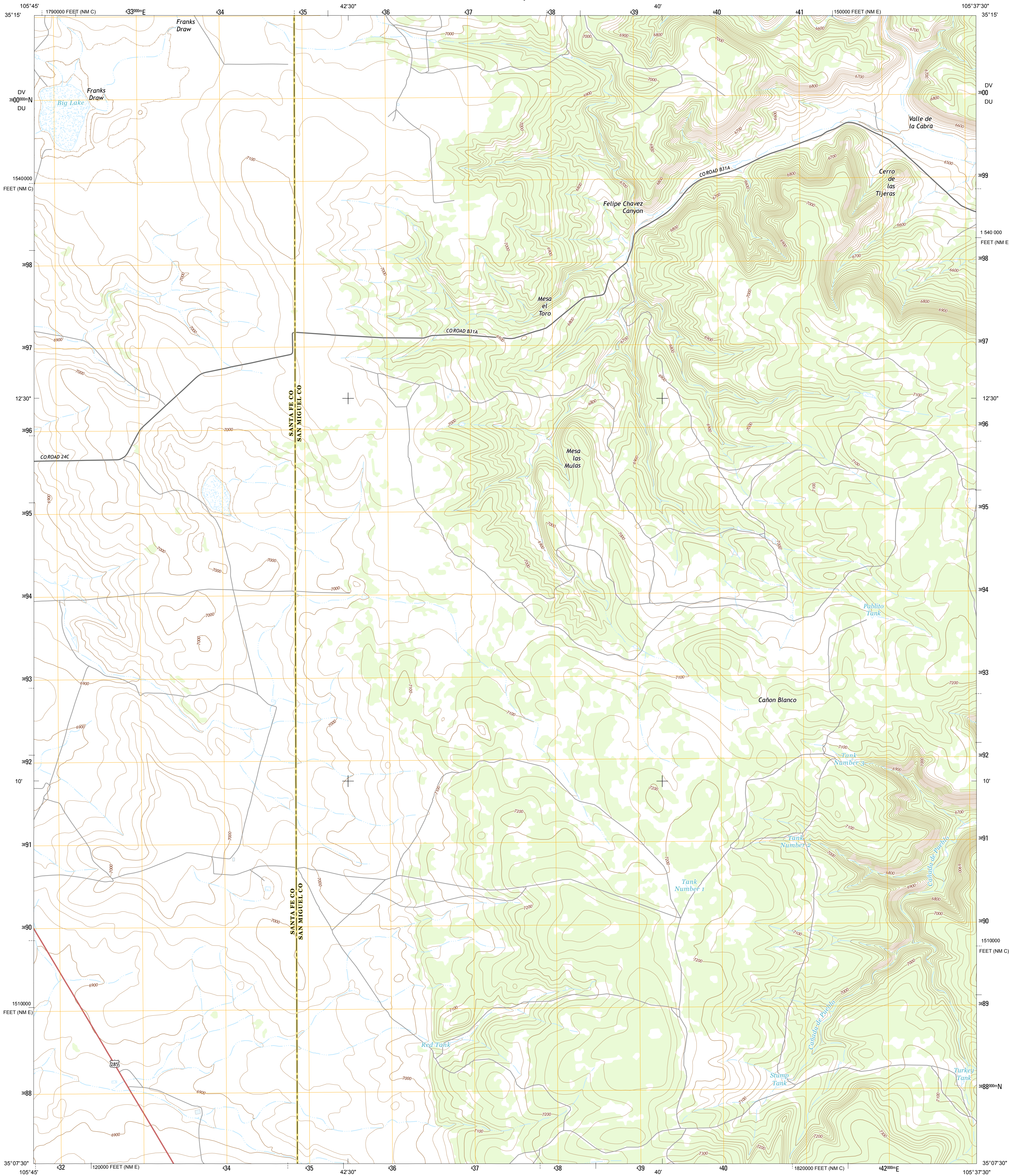




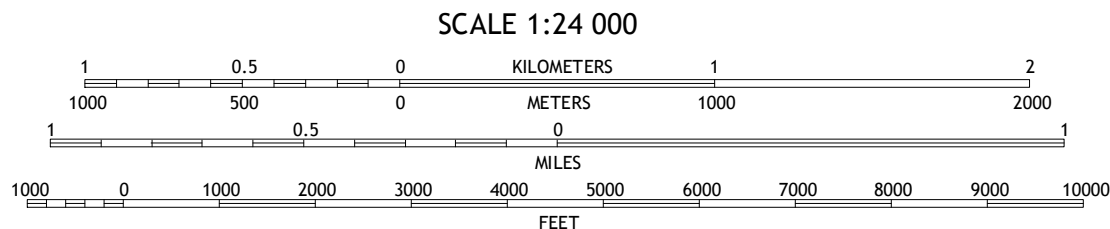
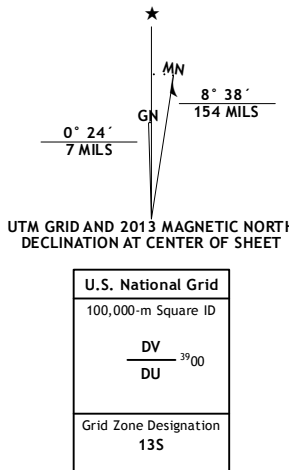
U.S. DEPARTMENT OF THE INTERIOR  
U. S. GEOLOGICAL SURVEY



MESA EL TORO QUADRANGLE  
NEW MEXICO  
7.5-MINUTE SERIES



**Produced by the United States Geological Survey**  
North American Datum of 1983 (NAD83)  
World Geodetic System of 1984 (WGS84). Projection and  
1 000-meter grid: Universal Transverse Mercator, Zone 13S  
10 000-foot ticks: New Mexico Coordinate System of 1983 (east  
and central zones)  
  
This map is not a legal document. Boundaries may be  
generalized for this map scale. Private lands within government  
reservations may not be shown. Obtain permission before  
entering private lands.  
  
Imagery.....NAIP, May 2011  
Roads.....©2006-2013 TomTom  
Names.....GNIS, 2013  
Hydrography.....National Hydrography Dataset, 2011  
Contours.....National Elevation Dataset, 1999  
Boundaries.....Census, IBWC, IBC, USGS, 1972-2012  
Public Land Survey System.....BLM, 2011

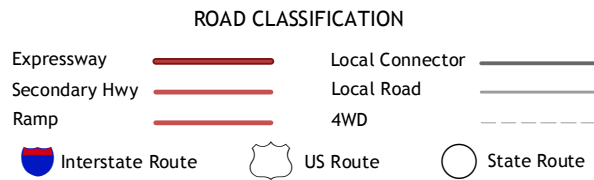


CONTOUR INTERVAL 20 FEET  
NORTH AMERICAN VERTICAL DATUM OF 1988  
  
This map was produced to conform with the  
National Geospatial Program US Topo Product Standard, 2011.  
A metadata file associated with this product is draft version 0.6.15



Wildhorse Mesa	Remona	Laguna Ortiz
White Lakes	Mesa El Toro	Leyba
El Cuervo Butte	Clines Corners	El Cabo

ADJOINING 7.5 QUADRANGLES



MESA EL TORO, NM  
2013

