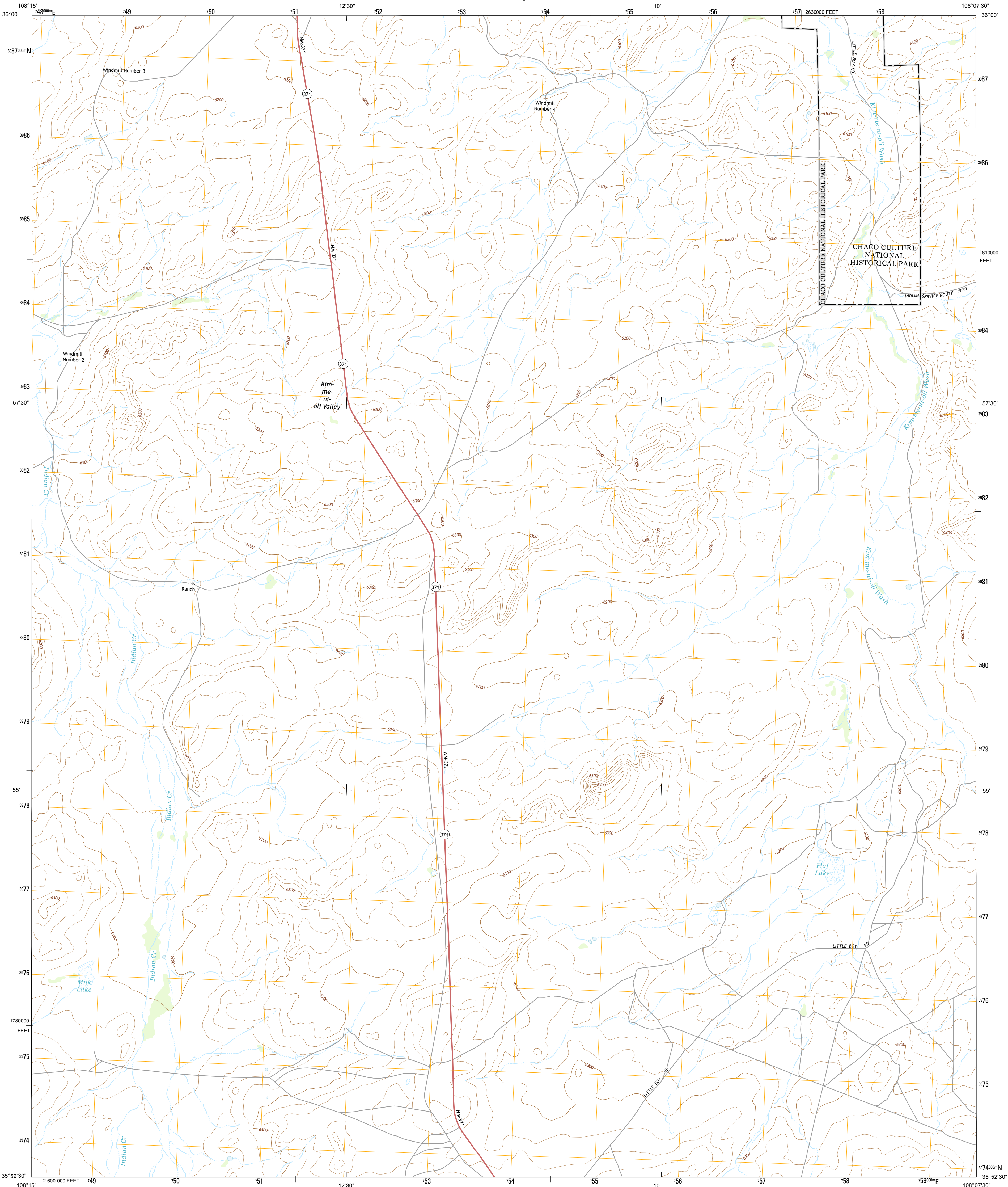




U.S. DEPARTMENT OF THE INTERIOR
U. S. GEOLOGICAL SURVEY



MILK LAKE QUADRANGLE
NEW MEXICO-MCKINLEY CO.
7.5-MINUTE SERIES



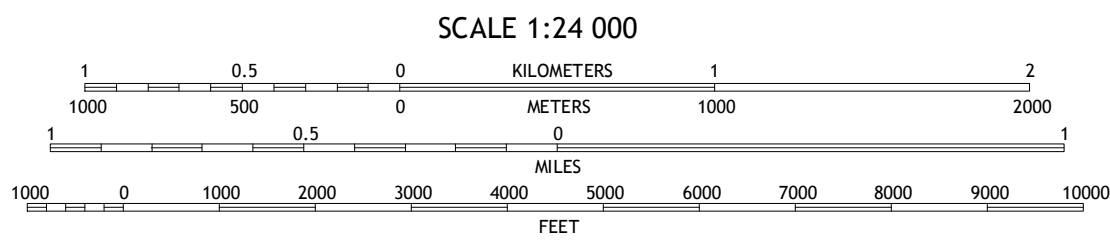
Produced by the United States Geological Survey
North American Datum of 1983 (NAD83)
World Geodetic System of 1984 (WGS84). Projection and
1,000-meter grid: Universal Transverse Mercator, Zone 12S
10,000-foot ticks: New Mexico Coordinate System of 1983 (west
zone)

This map is not a legal document. Boundaries may be
generalized for this map scale. Private lands within government
reservations may not be shown. Obtain permission before
entering private lands.

Imagery.....NAIP, May 2011
Roads.....©2006-2013 TomTom
Names.....GNIS, 2013
Hydrography.....National Hydrography Dataset, 2011
Contours.....National Elevation Dataset, 1999
Boundaries.....Census, IBWC, IBC, USGS, 1972 - 2012
Public Land Survey System.....BLM, 2011

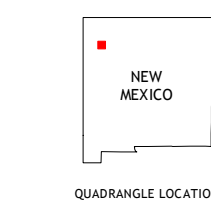
UTM GRID AND 2013 MAGNETIC NORTH
DECLINATION AT CENTER OF SHEET

U.S. National Grid
100,000-m Square ID
YE
Grid Zone Designation
12S



CONTOUR INTERVAL 20 FEET
NORTH AMERICAN VERTICAL DATUM OF 1988

This map was produced to conform with the
National Geospatial Program US Topo Product Standard, 2011.
A metadata file associated with this product is draft version 0.6.15



West of La Vida Mission	La Vida Mission	Kin Kluthin Ruins
Red Lake Well	Milk Lake	Nose Rock
Standing Rock	Antelope Lookout Mesa	Beckett Lake

ADJOINING 7.5 QUADRANGLES

ROAD CLASSIFICATION

Expressway
Secondary Hwy
Interstate Route

Local Connector
Local Road
4WD
US Route
State Route

MILK LAKE, NM
2013

