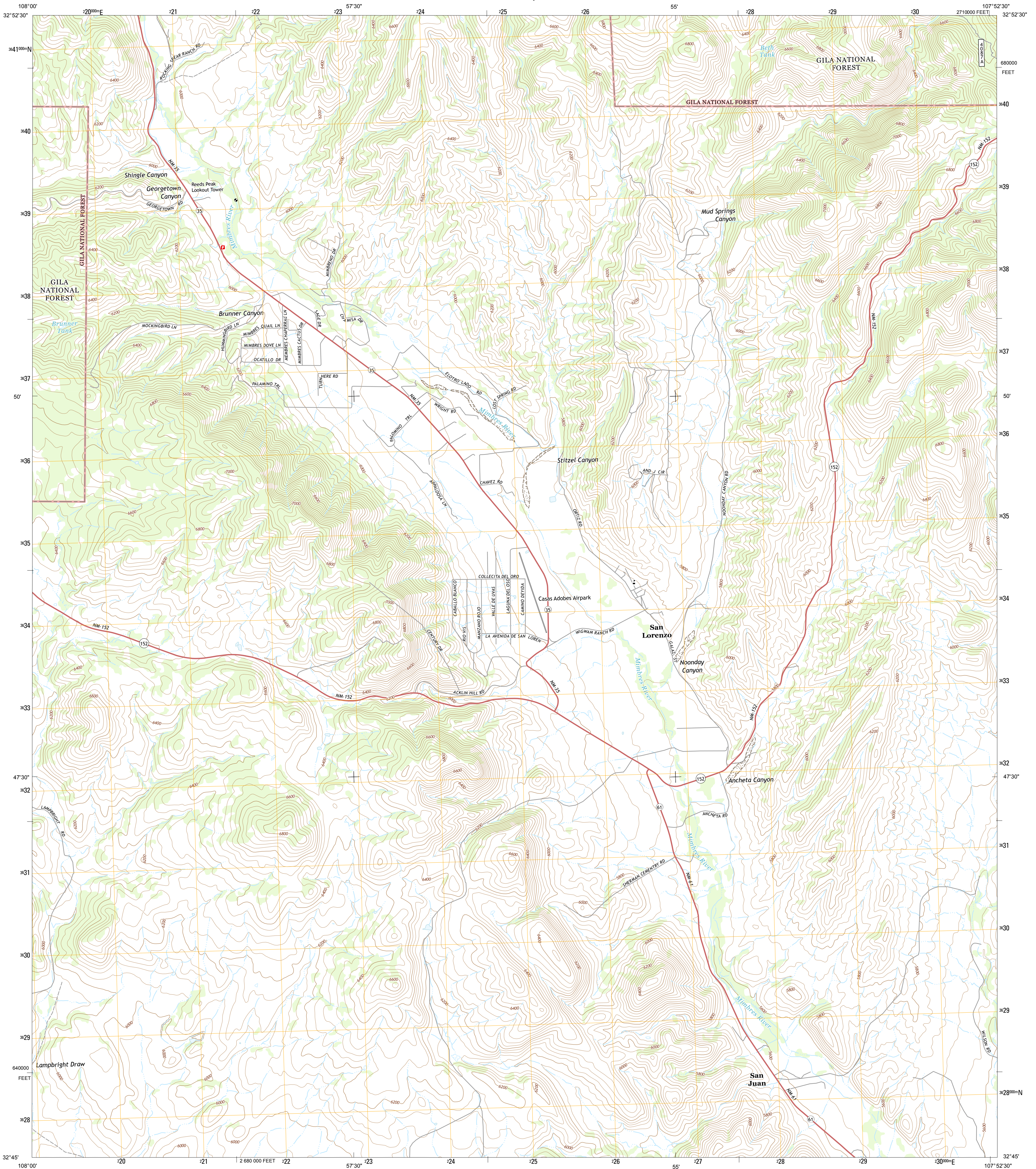




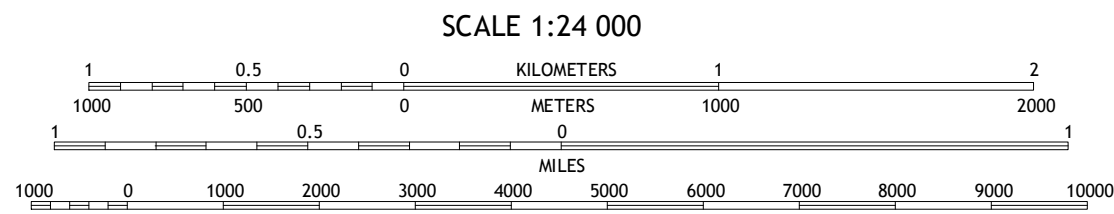
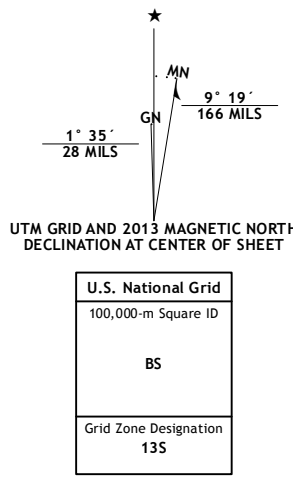
U.S. DEPARTMENT OF THE INTERIOR  
U. S. GEOLOGICAL SURVEY



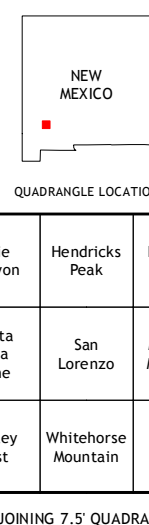
SAN LORENZO QUADRANGLE  
NEW MEXICO-GRANT CO.  
7.5-MINUTE SERIES



Produced by the United States Geological Survey  
North American Datum of 1983 (NAD83)  
World Geodetic System of 1984 (WGS84). Projection and  
1 000-meter grid: Universal Transverse Mercator, Zone 13S  
10 000-foot ticks: New Mexico Coordinate System of 1983 (west  
zone)  
This map is not a legal document. Boundaries may be  
generalized for this map scale. Private lands within government  
reservations may not be shown. Obtain permission before  
entering private lands.  
Imagery.....NAIP, May 2011  
Roads.....©2006-2013 TomTom  
Roads within US Forest Service Lands.....FS Topo Data  
with limited Forest Service updates, 2013  
Names.....National Hydrography Dataset, 2011  
Contours.....National Hydrography Dataset, 2001  
Boundaries.....Census, IBWC, IBC, USGS, 1972 - 2012  
Public Land Survey System.....BLM, 2011



CONTOUR INTERVAL 40 FEET  
NORTH AMERICAN VERTICAL DATUM OF 1988  
This map was produced to conform with the  
National Geospatial Program US Topo Product Standard, 2011.  
A metadata file associated with this product is draft version 0.6.15



ROAD CLASSIFICATION  
Expressway Secondary Hwy Ramp Interstate Route FS Primary Route Local Connector Local Road 4WD US Route FS Passenger Route State Route FS High Route Clearance Route  
Check with local Forest Service unit  
for current travel conditions and restrictions.

SAN LORENZO, NM  
2013

