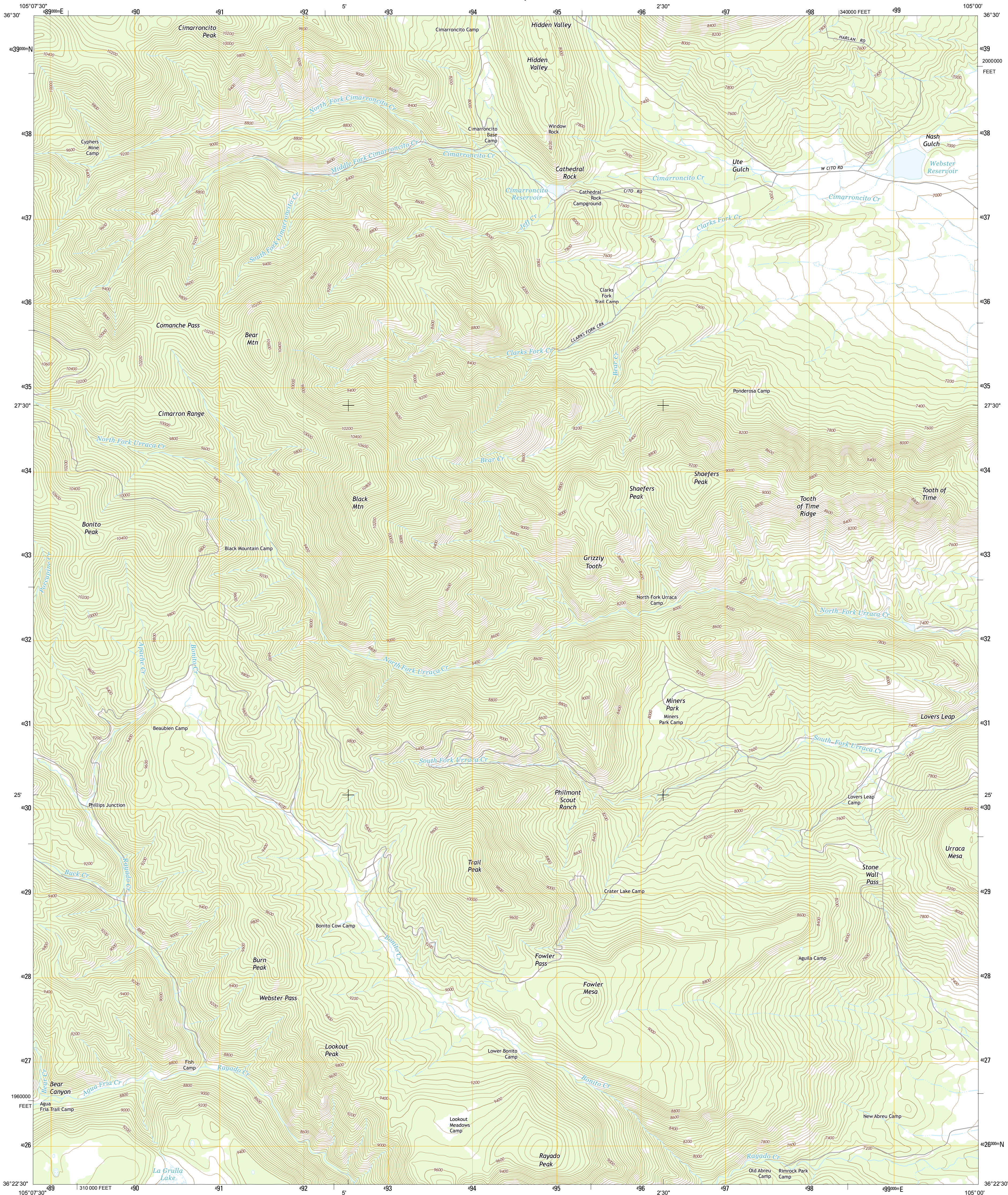




U.S. DEPARTMENT OF THE INTERIOR
U. S. GEOLOGICAL SURVEY



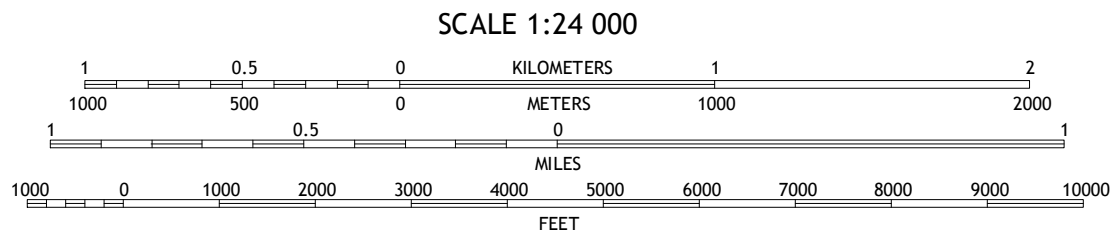
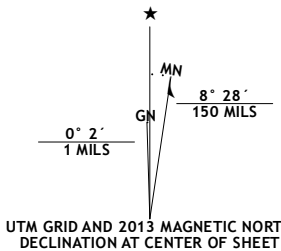
TOOTH OF TIME QUADRANGLE
NEW MEXICO-COLFAX CO.
7.5-MINUTE SERIES



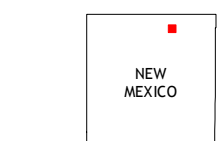
Produced by the United States Geological Survey
North American Datum of 1983 (NAD83)
World Geodetic System of 1984 (WGS84) Projection and
1000-meter grid: Universal Transverse Mercator, Zone 13S
10 000-foot ticks: New Mexico Coordinate System of 1983 (east zone)

This map is not a legal document. Boundaries may be generalized for this map scale. Private lands within government reservations may not be shown. Obtain permission before entering private lands.

Imagery.....N.A.P. May 2011
Roads.....©2006-2013 TomTom
Names.....GNIS, 2013
Hydrography.....National Hydrography Dataset, 2011
Contours.....National Elevation Dataset, 2000
Boundaries.....Census, IBW, IBC, USGS, 1972-2012
Public Land Survey System.....BLM, 2011

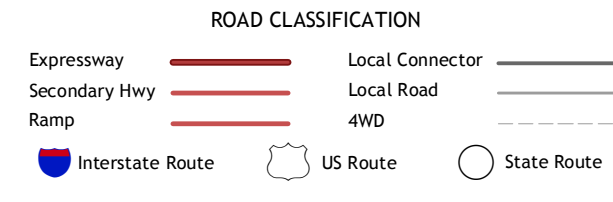


This map was produced to conform with the
National Geospatial Program US Topo Product Standard, 2011.
A metadata file associated with this product is draft version 0.6.15



Touch-Me-Not Mountain	Ute Park	Cimarron
Garcia Peak	Tooth of Time	Coyote Mesa
Agua Fria Peak	White Peak	Rayado

ADJOINING 7.5 QUADRANGLES



TOOTH OF TIME, NM
2013

