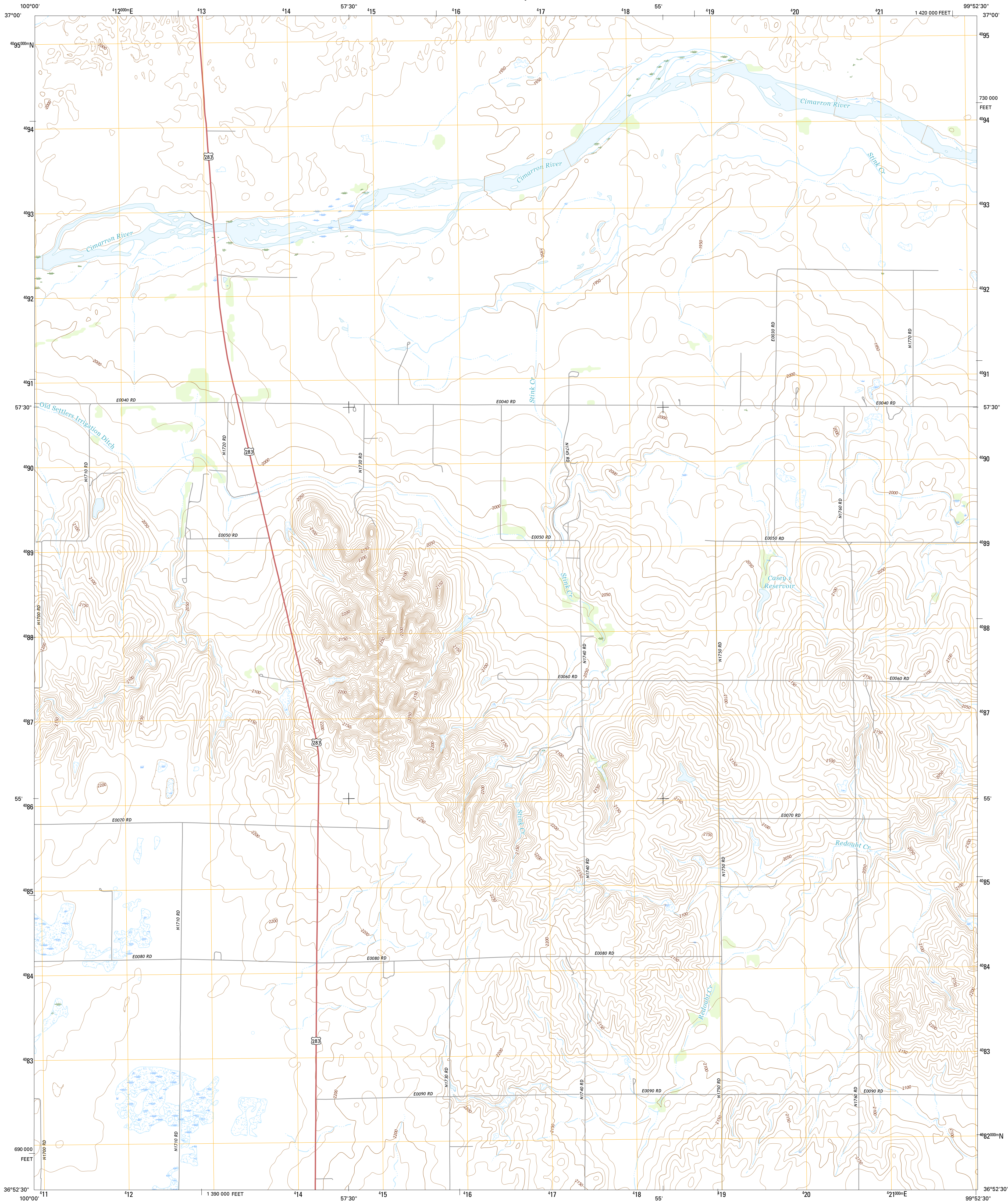




U.S. DEPARTMENT OF THE INTERIOR
U.S. GEOLOGICAL SURVEY



ROSTON NW QUADRANGLE
OKLAHOMA-HARPER CO.
7.5-MINUTE SERIES

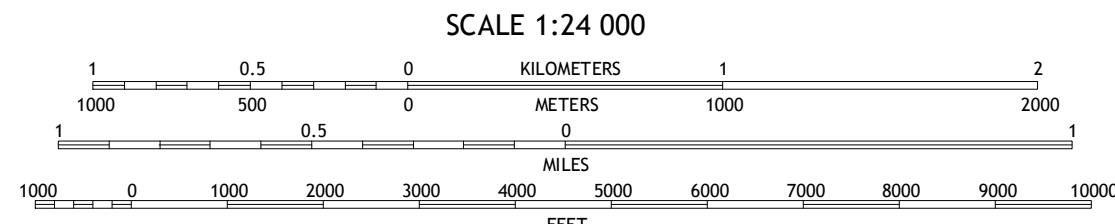
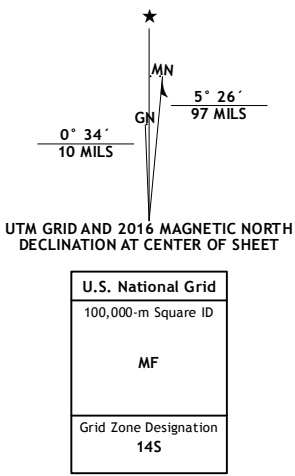


Produced by the United States Geological Survey
North American Datum of 1983 (NAD83)
World Geodetic System of 1984 (WGS84). Projection and
1 000-meter grid: Universal Transverse Mercator, Zone 14S
10 000-foot ticks: Oklahoma Coordinate System of 1983 (north
zone)

This map is not a legal document. Boundaries may be
generalized for this map scale. Private lands within government
reservations may not be shown. Obtain permission before
entering private lands.

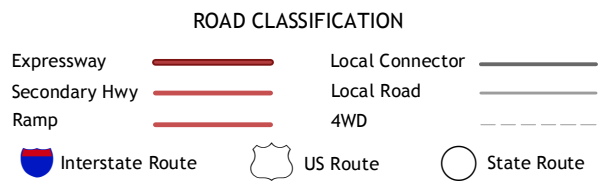
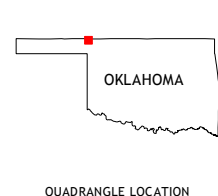
Imagery.....NAIP, June 2013
Roads.....U.S. Census Bureau, 2014 - 2015
Names.....GNIS, 2015
Hydrography.....National Hydrography Dataset, 2013
Contours.....National Elevation Dataset, 2007
Boundaries.....Multiple sources; see metadata file 1972 - 2015

Wetlands.....FWS National Wetlands Inventory 1977 - 2014



CONTOUR INTERVAL 10 FEET
NORTH AMERICAN VERTICAL DATUM OF 1988

This map was produced to conform with the
National Geospatial Program US Topo Product Standard, 2011.
A metadata file associated with this product is draft version 0.6.19



1	2	3
4	5	6
7	8	9

ADJOINING QUADRANGLES

1 Mount Helen
2 Englewood
3 Ashland SE
4 Gate NE
5 Roston NE
6 Gate
7 Roston
8 Roston SE

ROSTON NW, OK
2016

