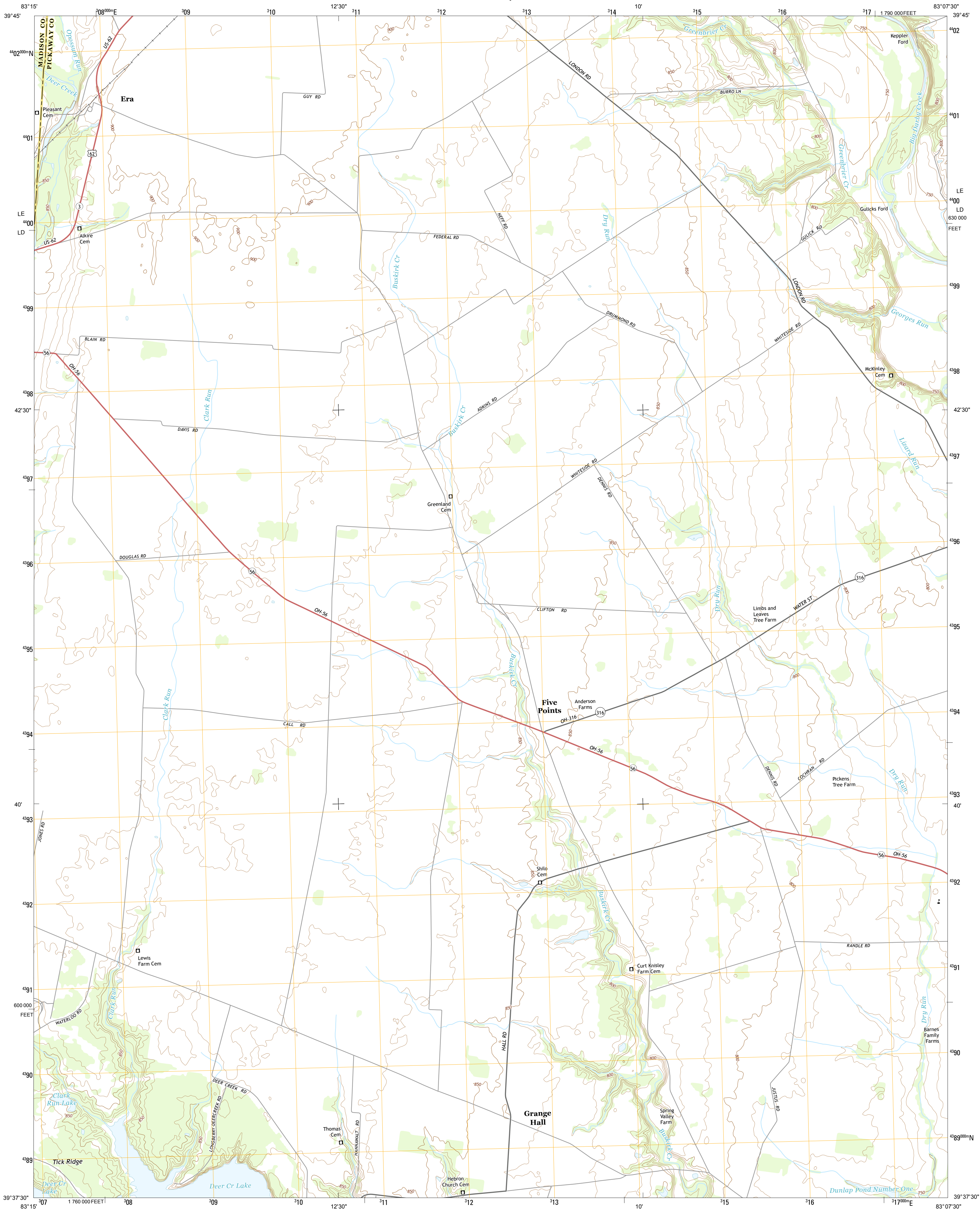




U.S. DEPARTMENT OF THE INTERIOR  
U. S. GEOLOGICAL SURVEY



FIVE POINTS QUADRANGLE  
OHIO  
7.5-MINUTE SERIES



Produced by the United States Geological Survey  
North American Datum of 1983 (NAD83)  
World Geodetic System of 1984 (WGS84), Projection and  
1 000-meter grid; Universal Transverse Mercator, Zone 17S  
10 000-foot ticks: Ohio Coordinate System of 1983 (south zone)

This map is not a legal document. Boundaries may be  
generalized for this map scale. Private lands within government  
reservations may not be shown. Obtain permission before  
entering private lands.

Imagery:.....NAIP, October 2011  
Roads:.....©2006-2013 TomTom  
Names:.....GNIS, 2013  
Hydrography:.....National Hydrography Dataset, 2011  
Contours:.....National Elevation Dataset, 2010  
Boundaries:.....Census, IBWC, IBC, USGS, 1972 - 2012  
Public Land Survey System:.....BLM, 2013

UTM GRID AND 2013 MAGNETIC NORTH  
DECLINATION AT CENTER OF SHEET

U.S. National Grid  
100,000 m Square ID  
LE  
LD  
Grid Zone Designation  
17S

SCALE 1:24 000  
1 000 0 500 0 500 1000 2000  
KILOMETERS  
1 000 0 500 0 500 1000 2000  
METERS  
1 000 0 1000 2000 3000 4000 5000 6000 7000 8000 9000 10000  
MILES  
FEET

CONTOUR INTERVAL 10 FEET  
NORTH AMERICAN VERTICAL DATUM OF 1988  
This map was produced to conform with the  
National Geospatial Program US Topo Product Standard, 2011.  
A metadata file associated with this product is draft version 0.6.15



Big Plain	Harrisburg	Commercial Point
Mount Sterling	Five Points	Darbyville
New Holland	Clarksburg	Williamsport

ADJOINING 7.5 QUADRANGLES

ROAD CLASSIFICATION  
Expressway  
Secondary Hwy  
Ramp  
Local Connector  
Local Road  
4WD  
Interstate Route  
US Route  
State Route

FIVE POINTS, OH  
2013



NSN 764301630767  
NGA REF NO. USGSX4K15410