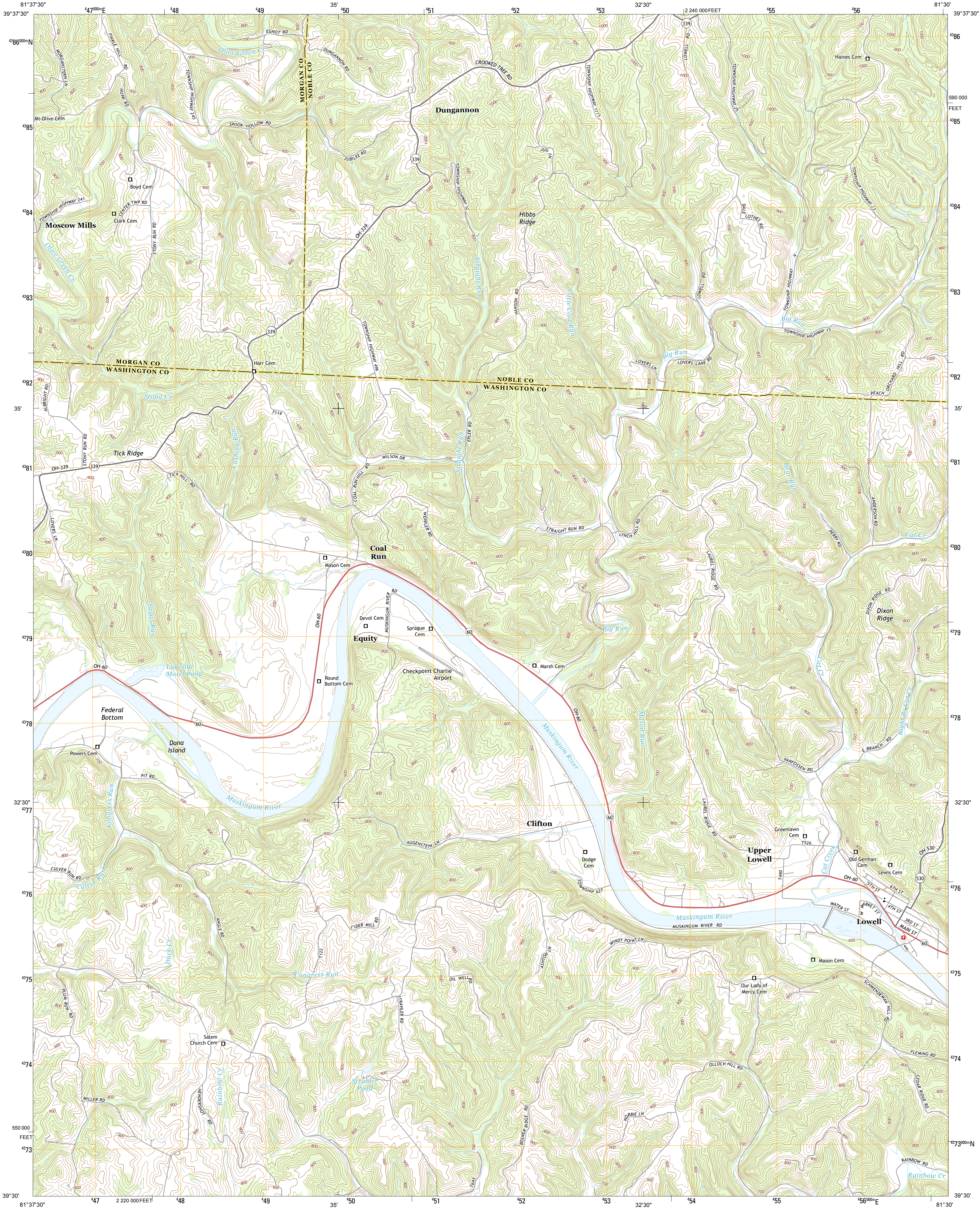




U.S. DEPARTMENT OF THE INTERIOR
U. S. GEOLOGICAL SURVEY



LOWELL QUADRANGLE
OHIO
7.5-MINUTE SERIES



Produced by the United States Geological Survey
North American Datum of 1983 (NAD83)
World Geodetic System of 1984 (WGS84). Projection and
1 000-meter grid: Universal Transverse Mercator, Zone 17S
10 000-foot ticks: Ohio Coordinate System of 1983 (south zone)

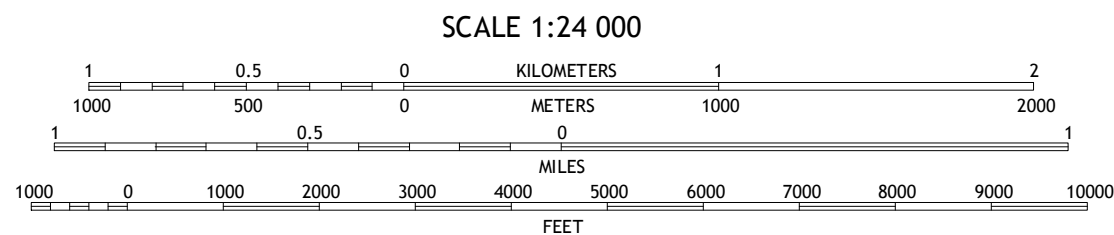
This map is not a legal document. Boundaries may be
generalized for this map scale. Private lands within government
reservations may not be shown. Obtain permission before
entering private lands.

Imagery.....NAIP, October 2011
Roads.....©2006-2013 TomTom
Names.....GNIS, 2013
Hydrography.....National Hydrography Dataset, 2011
Contours.....National Elevation Dataset, 2010
Boundaries.....Census, IBWC, IBC, USGS, 1972-2012
Public Land Survey System.....BLM, 2013

UTM GRID AND 2013 MAGNETIC NORTH
DECLINATION AT CENTER OF SHEET

7° 55' N
141 MILS
1° 21' E
6 MILS

U.S. National Grid
100,000-m Square ID
MD
Grid Zone Designation
17S



CONTOUR INTERVAL 20 FEET
NORTH AMERICAN VERTICAL DATUM OF 1988

This map was produced to conform with the
National Geospatial Program US Topo Product Standard, 2011.
A metadata file associated with this product is draft version 0.6.15



Reinsville	Caldwell South	Macksburg
Beverly	Lowell	Lower Salem
Watertown	Fleming	Marietta

ADJOINING 7.5 QUADRANGLES

ROAD CLASSIFICATION

Expressway
Secondary Hwy
Ramp

Local Connector
Local Road
4WD

Interstate Route
US Route
State Route

LOWELL, OH
2013

