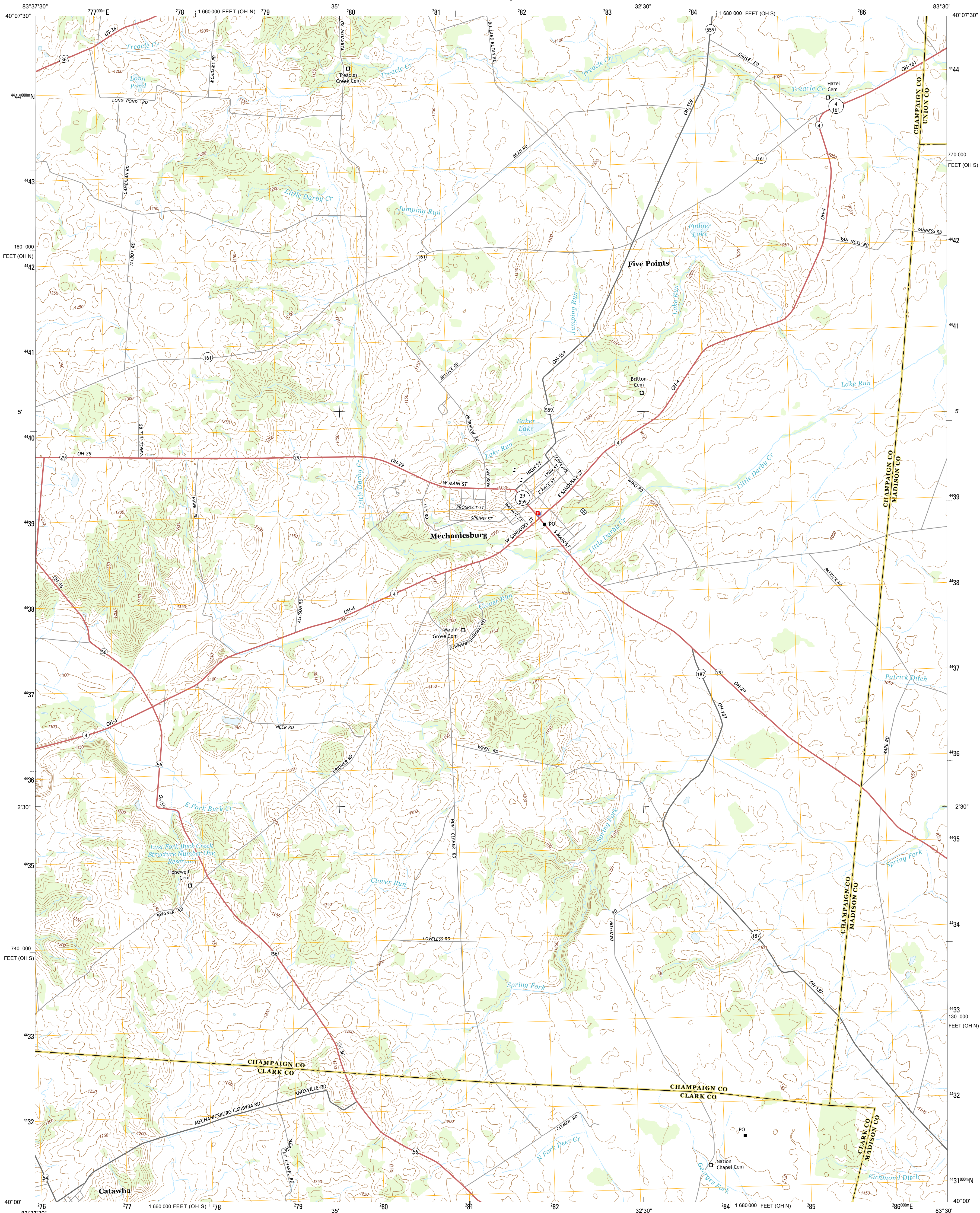




U.S. DEPARTMENT OF THE INTERIOR
U. S. GEOLOGICAL SURVEY



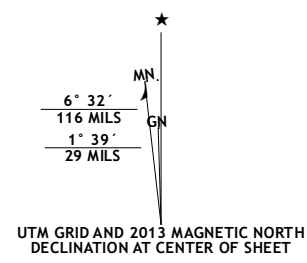
MECHANICSBURG QUADRANGLE
OHIO
7.5-MINUTE SERIES



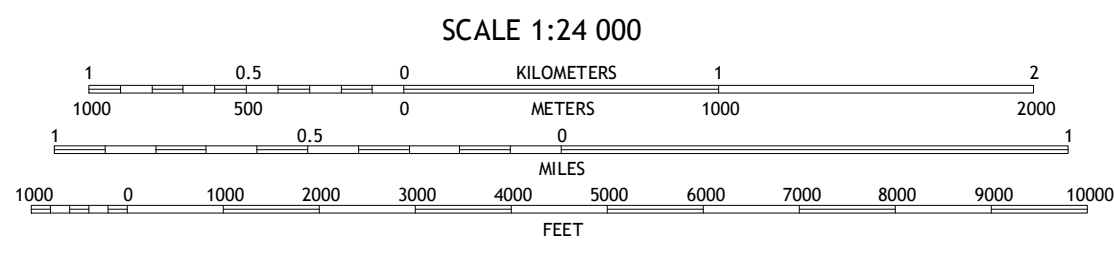
Produced by the United States Geological Survey
North American Datum of 1983 (NAD83)
World Geodetic System of 1984 (WGS84), Projection and
1000-meter grid: Universal Transverse Mercator, Zone 17T
10 000-foot ticks: Ohio Coordinate System of 1983 (south and
north zones)

This map is not a legal document. Boundaries may be
generalized for this map scale. Private lands within government
reservations may not be shown. Obtain permission before
entering private lands.

Imagery.....NAIP, October 2011
Roads.....©2006-2013 TomTom
Names.....GNIS, 2013
Hydrography.....National Hydrography Dataset, 2011
Contours.....National Elevation Dataset, 2010
Boundaries.....Census, IBWC, IBC, USGS, 1972-2012
Public Land Survey System.....BLM, 2013



U.S. National Grid 100,000-m Square ID
KE
Grid Zone Designation 17T



CONTOUR INTERVAL 10 FEET
NORTH AMERICAN VERTICAL DATUM OF 1988
This map was produced to conform with the
National Geospatial Program US Topo Product Standard, 2011.
A metadata file associated with this product is draft version 0.6.15

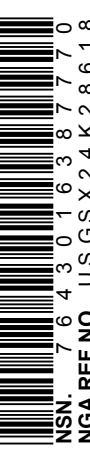


Kingscreek	North Lewisburg	Millford Center
Urbana East	Mechanicsburg	Plumwood
New Moorefield	South Vienna	London

ADJOINING 7.5-MINUTE QUADRANGLES

ROAD CLASSIFICATION		
Expressway	Local Connector	State Route
Secondary Hwy	Local Road	
Ramp	4WD	
Interstate Route	US Route	

MECHANICSBURG, OH
2013



USGS REF NO. USGS X 2 4 K 2 6 1 8