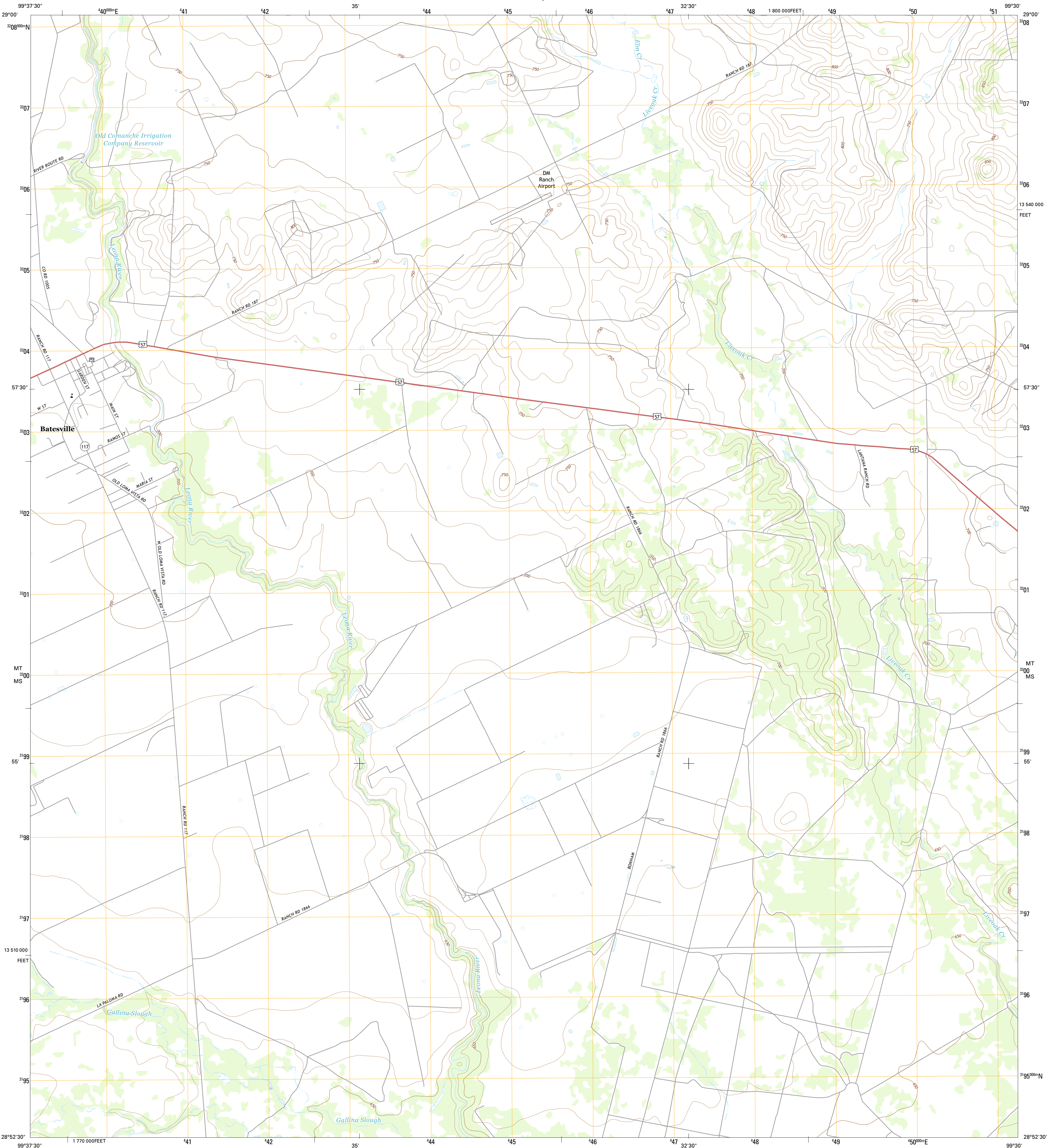




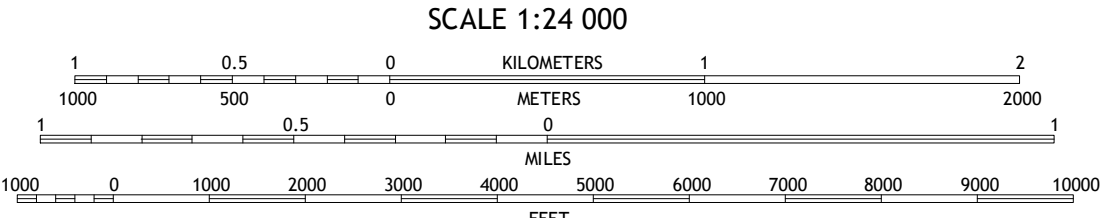
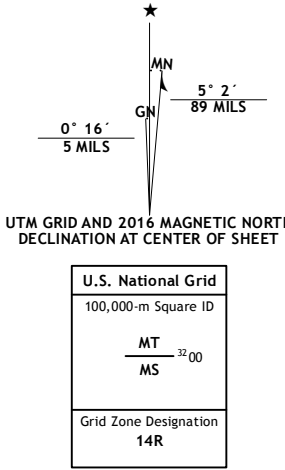
U.S. DEPARTMENT OF THE INTERIOR  
U.S. GEOLOGICAL SURVEY



BATESVILLE QUADRANGLE  
TEXAS-ZAVALA CO.  
7.5-MINUTE SERIES



**Produced by the United States Geological Survey**  
North American Datum of 1983 (NAD83)  
World Geodetic System of 1984 (WGS84). Projection and  
1 000-meter grid: Universal Transverse Mercator, Zone 14R  
10 000-foot ticks: Texas Coordinate System of 1983 (south  
central zone)  
This map is not a legal document. Boundaries may be  
generalized for this map scale. Private lands within government  
reservations may not be shown. Obtain permission before  
entering private lands.  
Images.....NAIP, May - 2014  
Roads.....U.S. Census Bureau, 2014 - 2015  
Names.....GNIS, 2015  
Hydrography.....National Hydrography Dataset, 2014  
Contours.....National Elevation Dataset, 2002  
Boundaries.....Multiple sources; see metadata file 1972 - 2015  
Wetlands.....FWS National Wetlands Inventory 1977 - 2014

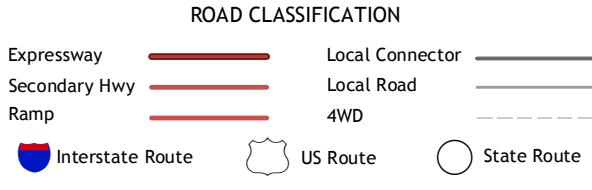


CONTOUR INTERVAL 10 FEET  
NORTH AMERICAN VERTICAL DATUM OF 1988  
This map was produced to conform with the  
National Geospatial Program US Topo Product Standard, 2011.  
A metadata file associated with this product is draft version 0.6.19



|   |   |   |                       |
|---|---|---|-----------------------|
| 1 | 2 | 3 | 1 Batesville Hill     |
| 4 |   | 5 | 2 Lone Tree Hill      |
| 6 | 7 | 8 | 3 Gross Tank          |
|   |   |   | 4 Batesville NW       |
|   |   |   | 5 Johnnie Little Hill |
|   |   |   | 6 Batesville SW       |
|   |   |   | 7 Loma Vista          |
|   |   |   | 8 West Ranch          |

ADJOINING QUADRANGLES



BATESVILLE, TX  
2016

