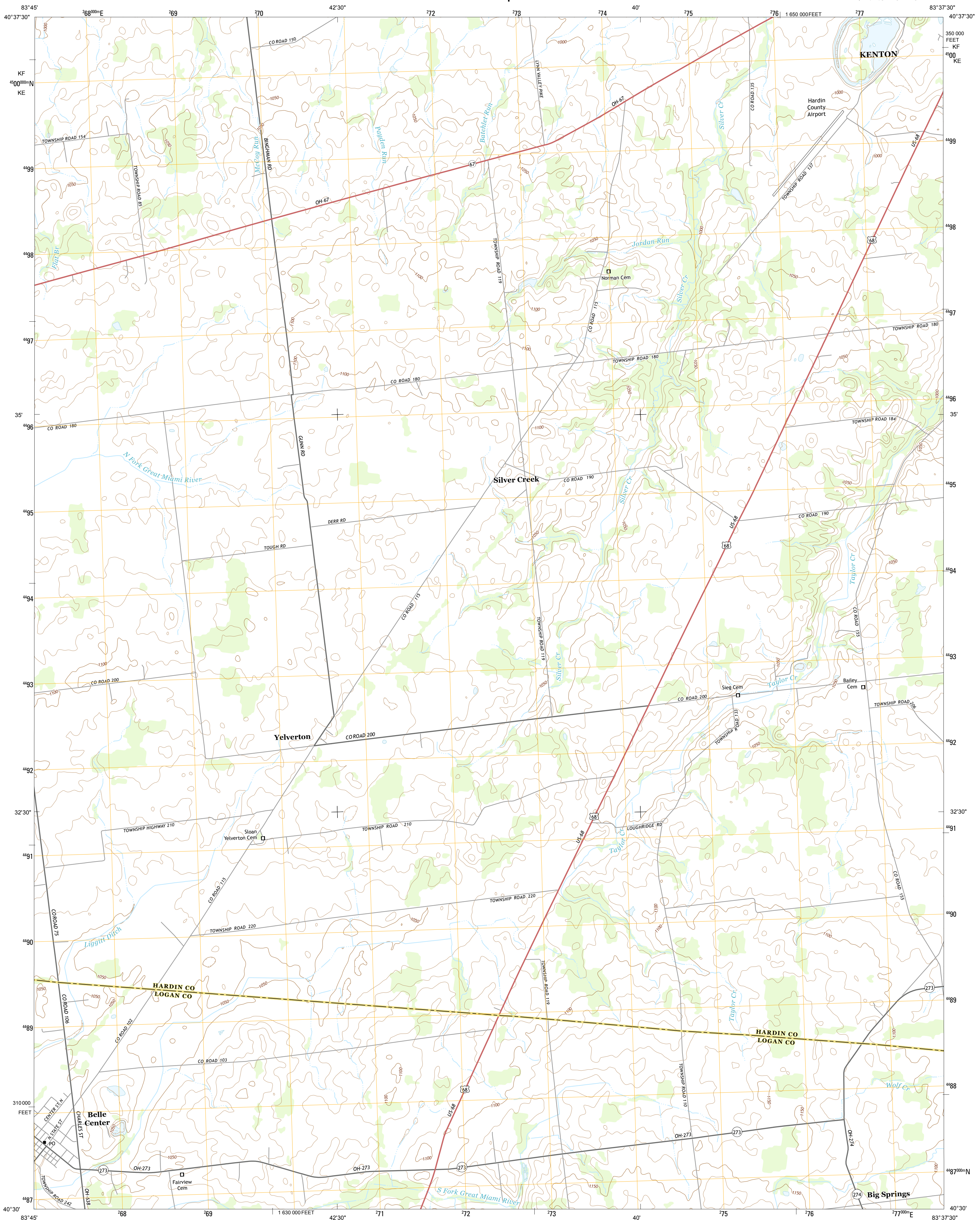




U.S. DEPARTMENT OF THE INTERIOR  
U. S. GEOLOGICAL SURVEY



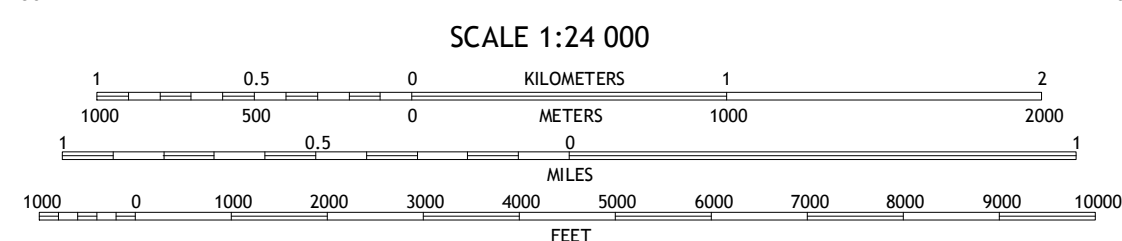
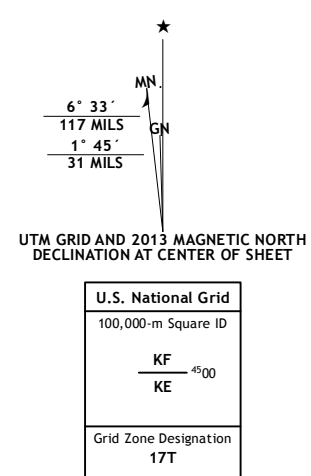
SILVER CREEK QUADRANGLE  
OHIO  
7.5-MINUTE SERIES



Produced by the United States Geological Survey  
North American Datum of 1983 (NAD83)  
World Geodetic System of 1984 (WGS84) Projection and  
1:500-meter grid; Universal Transverse Mercator, Zone 17T  
10 000-foot ticks; Ohio Coordinate System of 1983 (north zone)

This map is not a legal document. Boundaries may be  
generalized for this map scale. Private lands within government  
reservations may not be shown. Obtain permission before  
entering private lands.

Imagery.....NAIP, September 2011 - October 2011  
Roads.....©2006-2013 TomTom  
Names.....GNIS, 2013  
Hydrography.....National Hydrography Dataset, 2011  
Contours.....National Elevation Dataset, 2010  
Boundaries.....Census, IBWC, BC, USGS, 1972- 1972  
Public Land Survey System.....BLM, 2013



CONTOUR INTERVAL 10 FEET  
NORTH AMERICAN VERTICAL DATUM OF 1988








This map was produced to conform with the  
National Geospatial Program US Topo Product Standard, 2011.  
A metadata file associated with this product is draft version 0.6.15



Alger	Foraker	Kenton
Roundhead	Silver Creek	Mount Victory
Huntsville	Rushsylvania	West Mansfield

ADJOINING 7.5' QUADRANGLES

## ROAD CLASSIFICATION

Expressway  Local Connector   
Secondary Hwy  Local Road   
Ramp  4WD   
 Interstate Route  US Route  State Route

SILVER CREEK, OH  
2013

