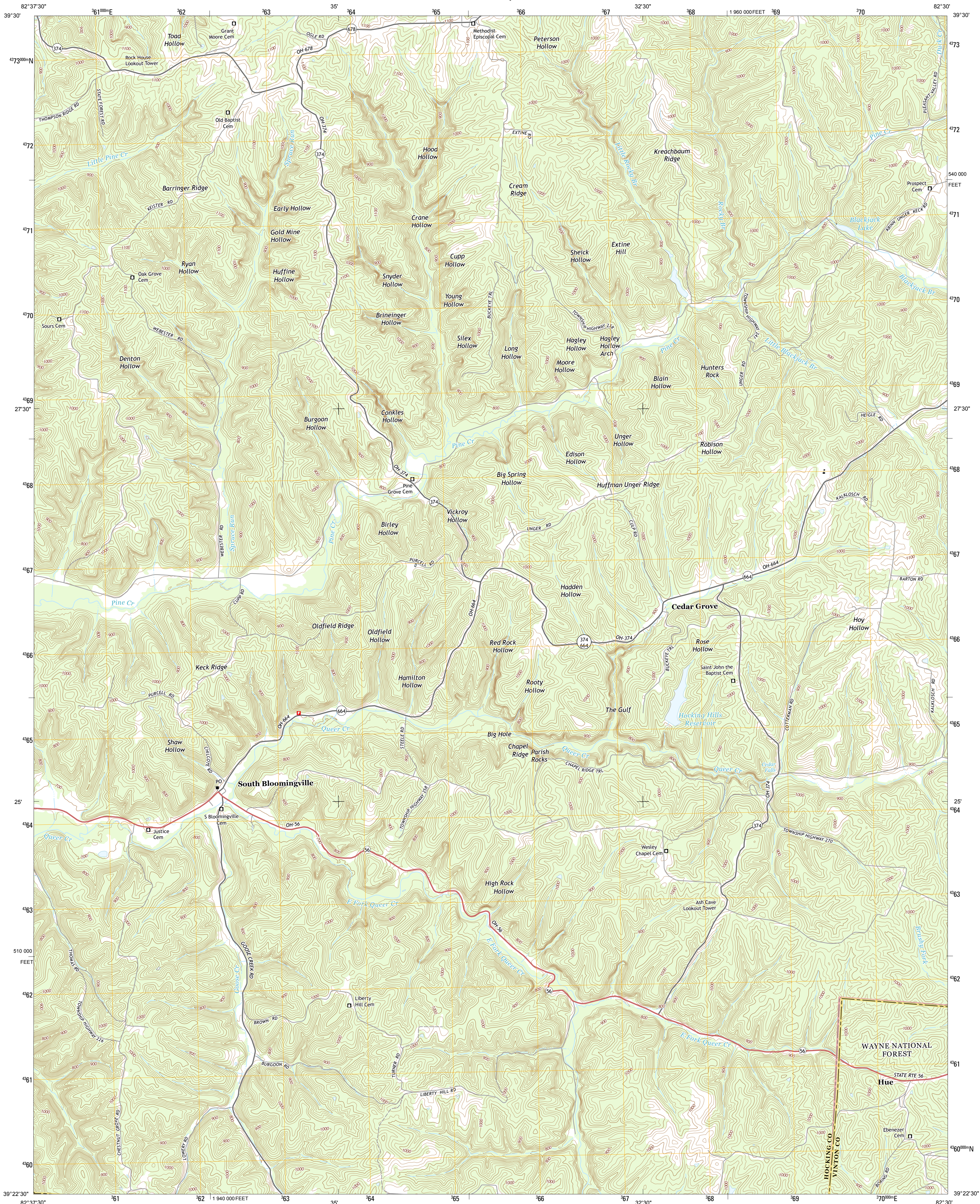




U.S. DEPARTMENT OF THE INTERIOR
U. S. GEOLOGICAL SURVEY

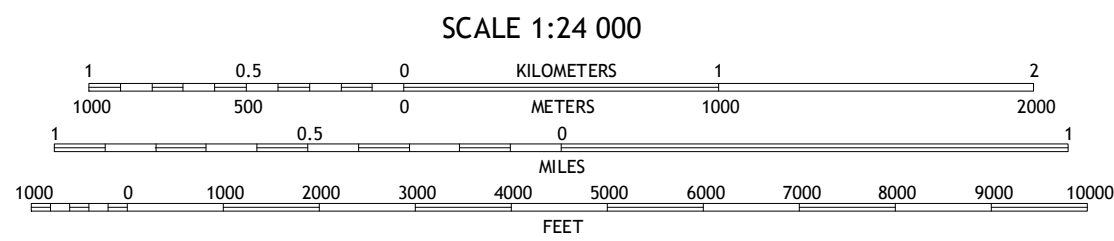


SOUTH BLOOMINGVILLE QUADRANGLE
OHIO
7.5-MINUTE SERIES

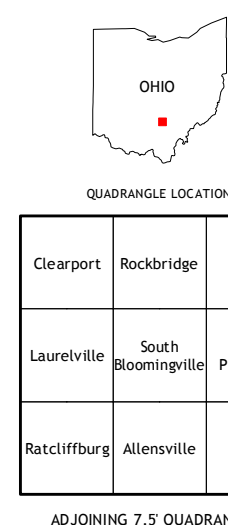


Produced by the United States Geological Survey
North American Datum of 1983 (NAD83)
World Geodetic System of 1984 (WGS84)
1 000-meter grid; Universal Transverse Mercator, Zone 17S
10 000-foot ticks; Ohio Coordinate System of 1983 (south zone)
This map is not a legal document. Boundaries may be generalized for this map scale. Private lands within government reservations may not be shown. Obtain permission before entering private lands.
Imagery.....NAIP, October 2011
Roads.....©2006-2013 TomTom
Roads within US Forest Service Lands.....with limited Forest Service updates, 2013
Names.....©2013 National Hydrography Dataset, 2011
Contours.....National Elevation Dataset, 2010
Boundaries.....BWC, BIC, USGS, 1972-2012
Public Land Survey System.....BLM, 2013

UTM GRID AND 2013 MAGNETIC NORTH DECLINATION AT CENTER OF SHEET
U.S. National Grid
100,000-m Square ID
LD
Grid Zone Designation
17S



CONTOUR INTERVAL 20 FEET
NORTH AMERICAN VERTICAL DATUM OF 1988
This map was produced to conform with the National Geospatial Program US Topo Product Standard, 2011. A metadata file associated with this product is draft version 0.6.15.



ROAD CLASSIFICATION
Expressway
Secondary Hwy
Ramp
Interstate Route
FS Primary Route
Local Connector
Local Road
4WD
US Route
FS Passenger Route
State Route
FS High
Clearance Route
Check with local Forest Service unit for current travel conditions and restrictions.

**SOUTH BLOOMINGVILLE, OH
2013**

