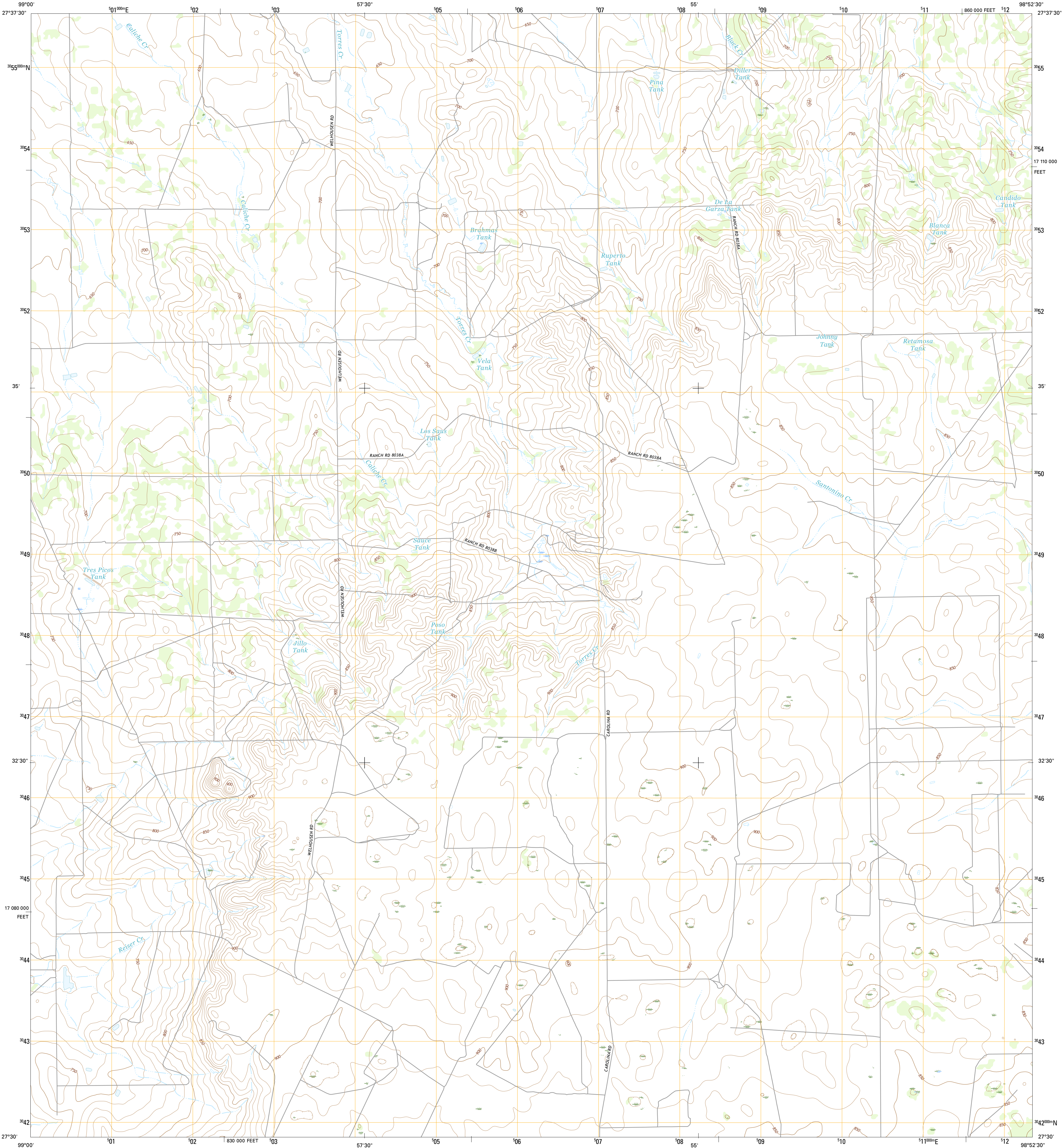




U.S. DEPARTMENT OF THE INTERIOR
U.S. GEOLOGICAL SURVEY



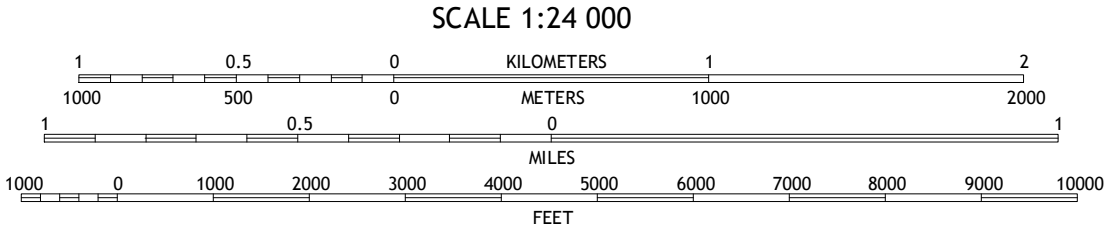
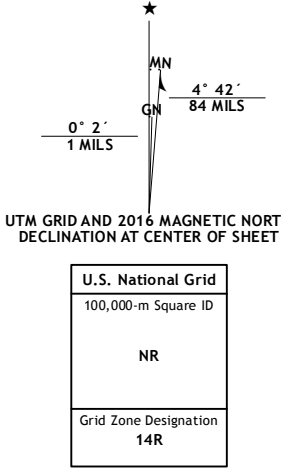
MILLS BENNETT SW QUADRANGLE
TEXAS-WEBB CO.
7.5-MINUTE SERIES



Produced by the United States Geological Survey
North American Datum of 1983 (NAD83)
World Geodetic System of 1984 (WGS84). Projection and
1 000-meter grid: Universal Transverse Mercator, Zone 14R
1 000-foot ticks: Texas Coordinate System of 1983 (south zone)

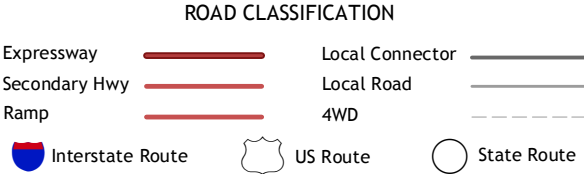
This map is not a legal document. Boundaries may be
generalized for this map scale. Private lands within government
reservations may not be shown. Obtain permission before
entering private lands.

Imagery.....NAIP, May 2014
Roads.....U.S. Census Bureau, 2014 - 2015
Names.....GNIS, 2015
Hydrography.....National Hydrography Dataset, 2014
Contours.....National Elevation Dataset, 2008
Boundaries.....Multiple sources; see metadata file 1972 - 2015
Wetlands.....FWS National Wetlands Inventory 1977 - 2014



CONTOUR INTERVAL 10 FEET
NORTH AMERICAN VERTICAL DATUM OF 1988

This map was produced to conform with the
National Geospatial Program US Topo Product Standard, 2011.
A metadata file associated with this product is draft version 0.6.19



1	2	3	1 Piedra Parada Ranch
4	5	2 Mills Bennett NW	
6	7	3 Mills Bennett	
		4 Shipp Ranch	
		5 San Pablo	
		6 Mirando City	
		7 Olton	
		8 Bruni	

MILLS BENNETT SW, TX
2016

