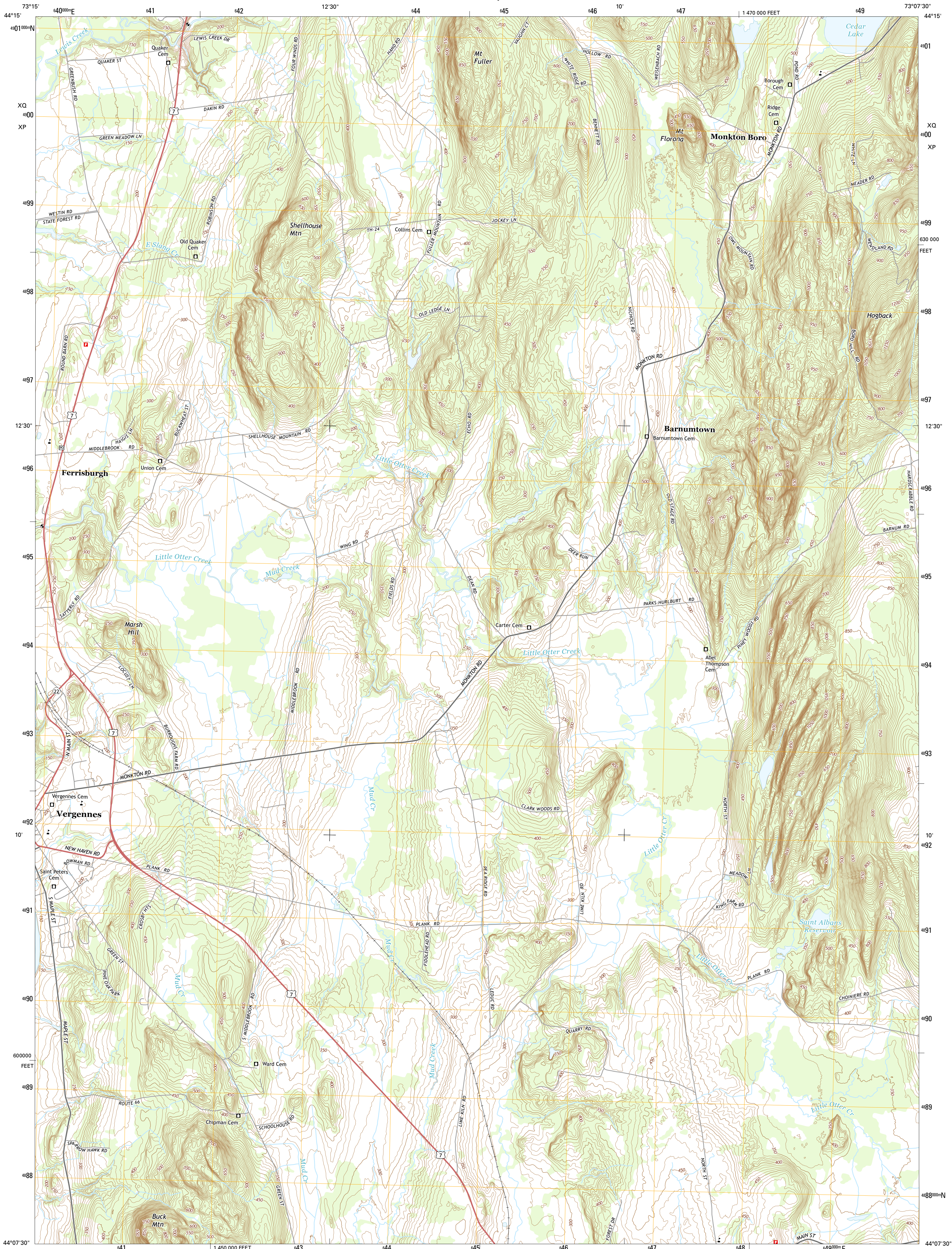




U.S. DEPARTMENT OF THE INTERIOR
U.S. GEOLOGICAL SURVEY



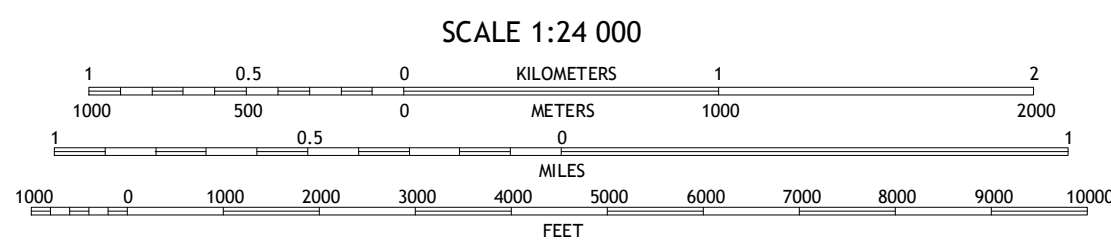
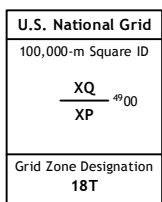
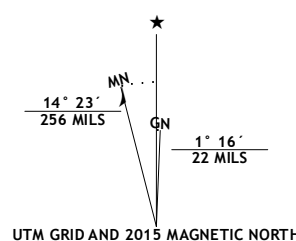
VERGENNES EAST QUADRANGLE
VERMONT-ADDISON CO.
7.5-MINUTE SERIES



Produced by the United States Geological Survey
North American Datum of 1983 (NAD83)
World Geodetic System of 1984 (WGS84), Projection and
1 000-meter grid: Universal Transverse Mercator, Zone 18T
10 000-foot ticks: Vermont Coordinate System of 1983

This map is not a legal document. Boundaries may be
generalized for this map scale. Private lands within government
reservations may not be shown. Obtain permission before
entering private lands.

Imagery.....NAIP, July 2014
Roads.....HERE, ©2013 - 2014
Names.....GNIS, 2015
Hydrography.....National Hydrography Dataset, 2014
Contours.....National Elevation Dataset, 2014
Boundaries.....Multiple sources; see metadata file 1972 - 2015



CONTOUR INTERVAL 10 FEET
NORTH AMERICAN VERTICAL DATUM OF 1988
This map was produced to conform with the
National Geospatial Program US Topo Product Standard, 2011.
A metadata file associated with this product is draft version 0.6.18



1	2	3
4	5	6
7	8	

ADJOINING QUADRANGLES

1 Charlotte
2 Mount Philo
3 Hinesburg
4 Vergennes West
5 Bristol
6 Snake Mountain
7 Middlebury
8 South Mountain

ROAD CLASSIFICATION		
Expressway	Local Connector	
Secondary Hwy	Local Road	
Ramp	4WD	
Interstate Route	US Route	State Route

VERGENNES EAST, VT
2015

