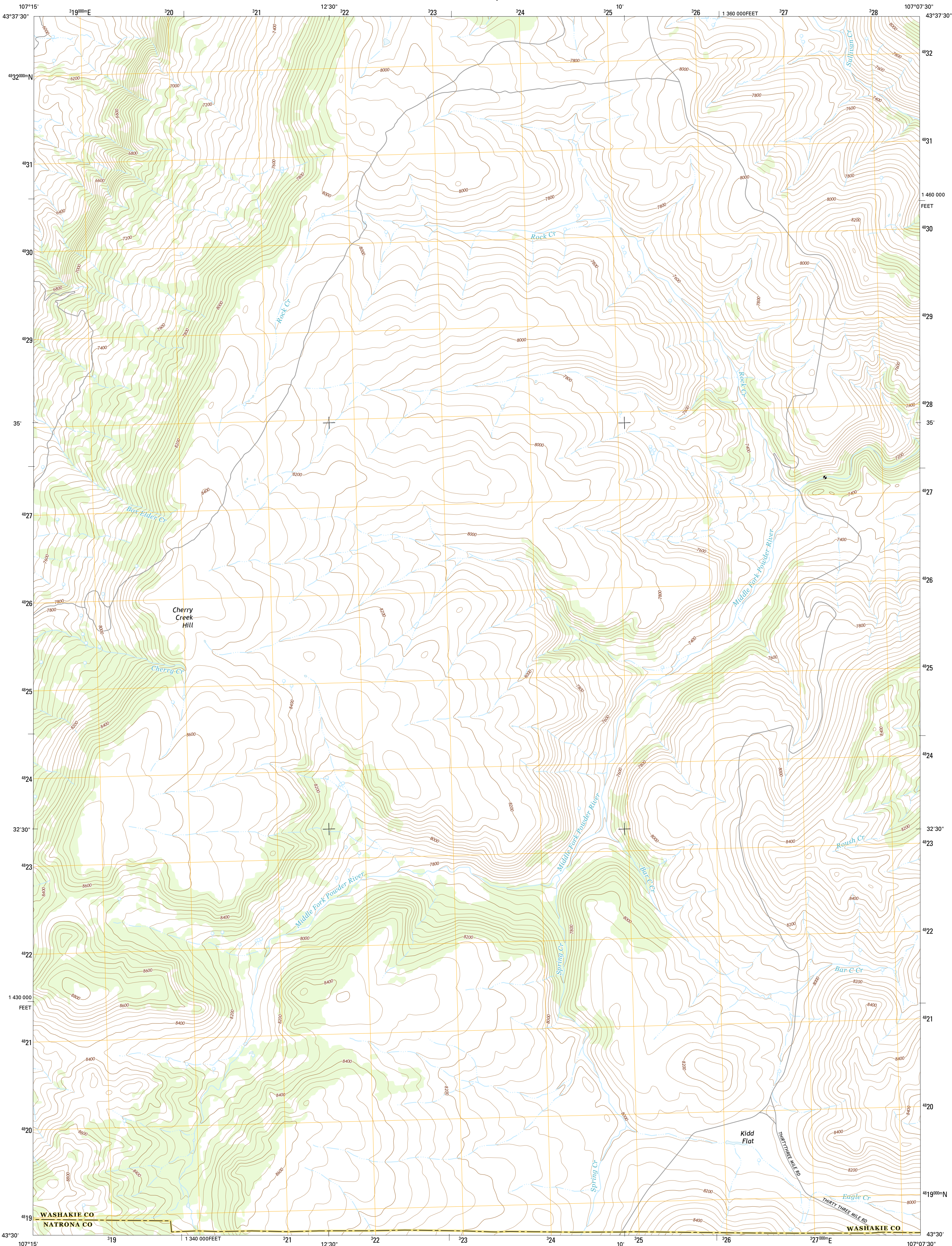




U.S. DEPARTMENT OF THE INTERIOR  
U.S. GEOLOGICAL SURVEY



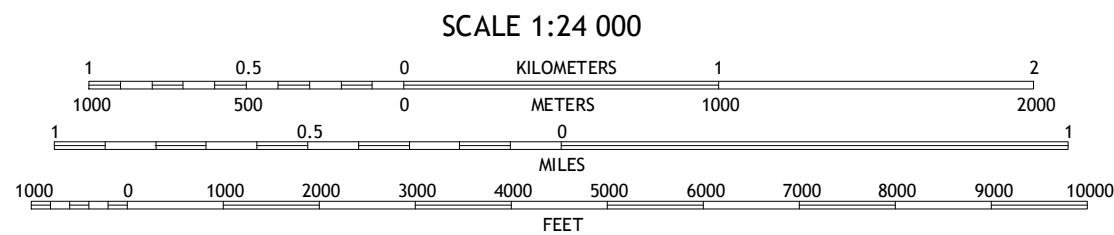
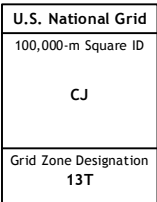
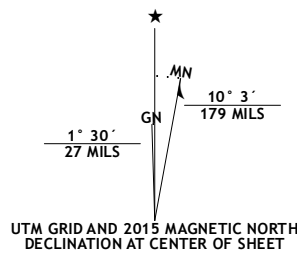
CHERRY CREEK HILL QUADRANGLE  
WYOMING  
7.5-MINUTE SERIES



Produced by the United States Geological Survey  
North American Datum of 1983 (NAD83)  
World Geodetic System of 1984 (WGS84). Projection and  
1 000-meter grid: Universal Transverse Mercator, Zone 13T  
10 000-foot ticks: Wyoming Coordinate System of 1983 (east  
central zone)

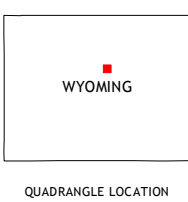
This map is not a legal document. Boundaries may be  
generalized for this map scale. Private lands within government  
reservations may not be shown. Obtain permission before  
entering private lands.

Imagery.....NAIP, August 2012  
Roads.....HERE, 2013  
Names.....GNIS, 2015  
Hydrography.....National Hydrography Dataset, 2012  
Contours.....National Elevation Dataset, 2011  
Boundaries.....Multiple sources; see metadata file 1972 - 2015  
Public Land Survey System.....BLM, 2011



CONTOUR INTERVAL 40 FEET  
NORTH AMERICAN VERTICAL DATUM OF 1988

This map was produced to conform with the  
National Geospatial Program US Topo Product Standard, 2011.  
A metadata file associated with this product is draft version 0.6.18



ROAD CLASSIFICATION	
Expressway	Local Connector
Secondary Hwy	Local Road
Ramp	4WD
Interstate Route	US Route
	State Route

1	2	3
4	5	6
7	8	

ADJOINING QUADRANGLES

1 Mahogany Butte  
2 Horse Butte  
3 Turk Springs  
4 Lost Creek  
5 Gordon Creek  
6 Badwater NE  
7 Grave Spring  
8 First Water Draw

CHERRY CREEK HILL, WY  
2015

