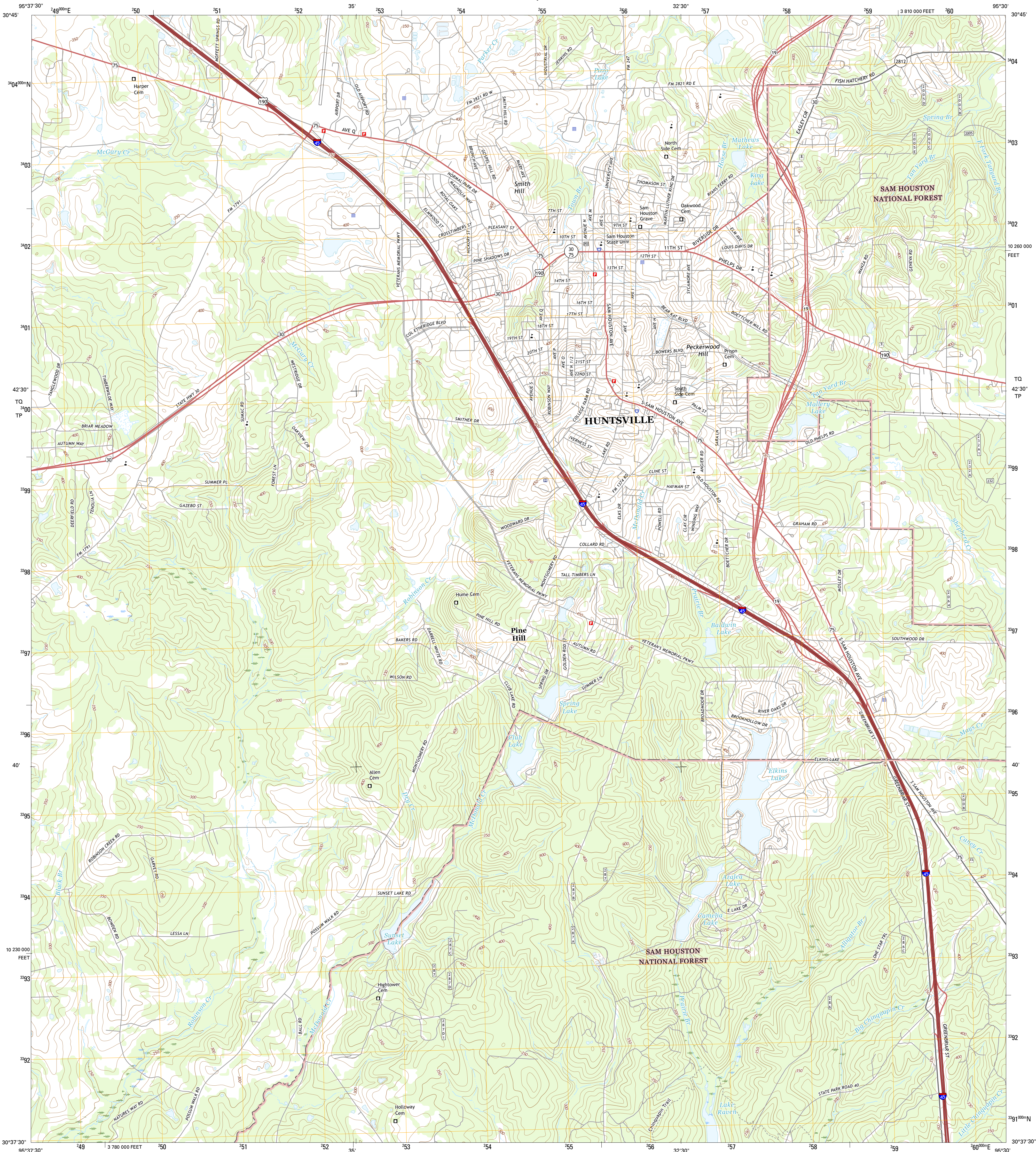




U.S. DEPARTMENT OF THE INTERIOR
U.S. GEOLOGICAL SURVEY



HUNTSVILLE QUADRANGLE
TEXAS-WALKER CO.
7.5-MINUTE SERIES



Produced by the United States Geological Survey
North American Datum of 1983 (NAD83)
World Geodetic System of 1984 (WGS84) Projection and
1 000-meter grid: Universal Transverse Mercator, Zone 15R
10 000-foot ticks: Texas Coordinate System of 1983 (central zone)
This map is not a legal document. Boundaries may be generalized for this map scale. Private lands within government reservations may not be shown. Obtain permission before entering private lands.
Imagery.....NAP, October 2014
Roads.....U.S. Census Bureau, 2014 - 2015
Roads within US Forest Service Lands.....FSTopo Data with limited Forest Service updates, 2012 - 2015
Names.....GNIS, 2015
Hydrography.....National Hydrography Dataset, 2014
Contours.....National Elevation Dataset, 2003
Boundaries.....Multiple sources; see metadata file 1972 - 2015
Wetlands.....FWS National Wetlands Inventory 1977 - 2014

UTM GRID AND 2016 MAGNETIC NORTH DECLINATION AT CENTER OF SHEET
U.S. National Grid
100,000-m Square ID
TQ
TP
Grid Zone Designation
15R

SCALE 1:24 000
1 000 0 500 0 KILOMETERS 1 2
1 000 0 500 0 METERS 1 000 2000
1 000 0 1000 2000 3000 4000 5000 6000 7000 8000 9000 10000
FEET
CONTOUR INTERVAL 10 FEET
NORTH AMERICAN VERTICAL DATUM OF 1988
This map was produced to conform with the
National Geospatial Program US Topo Product Standard, 2011.
A metadata file associated with this product is draft version 0.6.19



ROAD CLASSIFICATION
Expressway
Secondary Hwy
Ramp
Interstate Route
US Route
FS Passenger Route
FS Primary Route
Local Connector
Local Road
4WD
State Route
FS High Clearance Route

1	2	3
4	5	6
7	8	9

ADJOINING QUADRANGLES

- 1 Crabbs Prairie
- 2 Pine Prairie
- 3 Riverside
- 4 Galilee
- 5 Phelps
- 6 San Jacinto
- 7 Moore Grove
- 8 New Waverly

HUNTSVILLE, TX
2016

