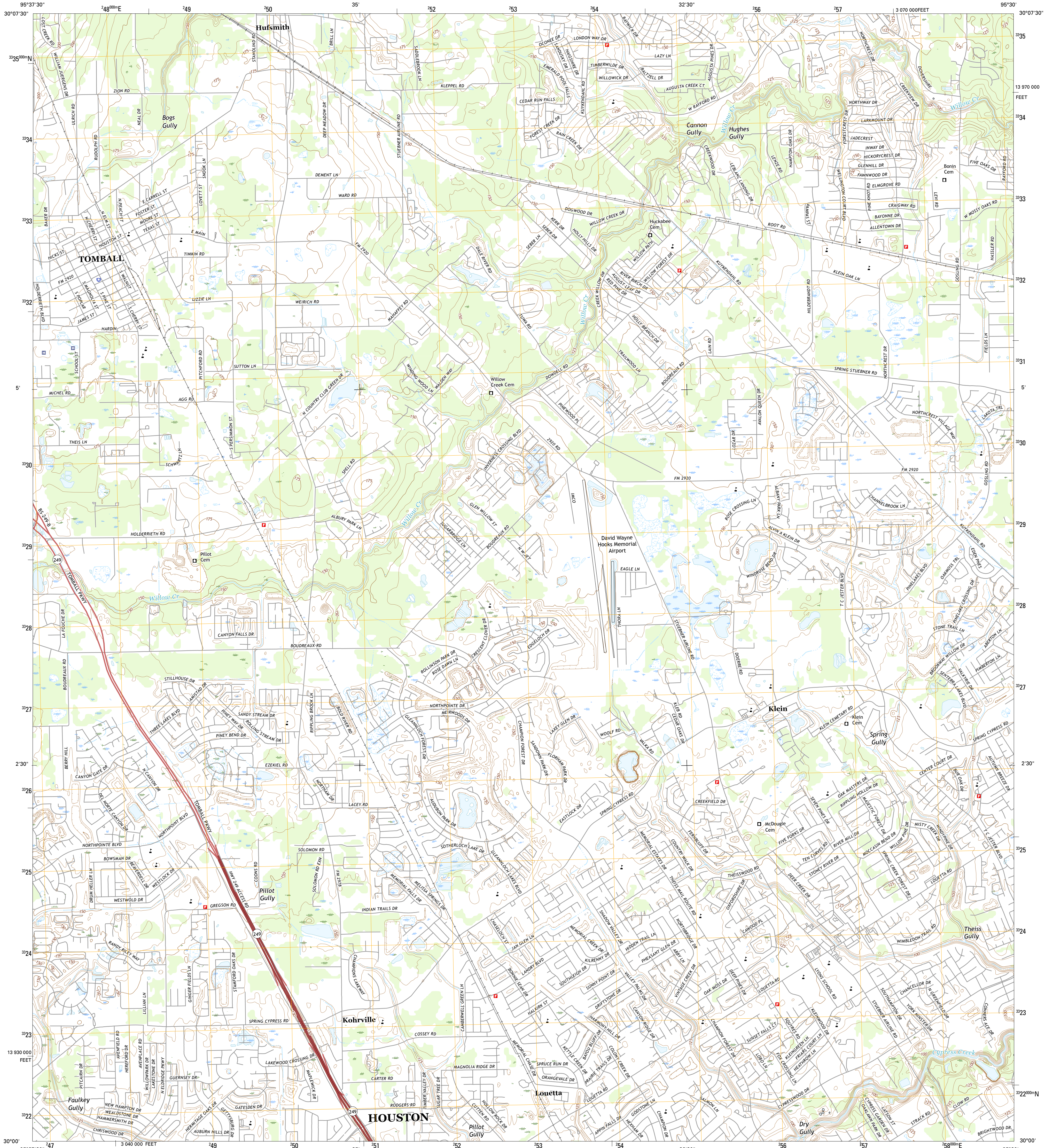




U.S. DEPARTMENT OF THE INTERIOR
U.S. GEOLOGICAL SURVEY



TOMBALL QUADRANGLE
TEXAS-HARRIS CO.
7.5-MINUTE SERIES

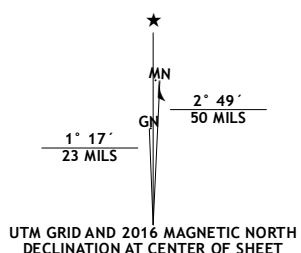


Produced by the United States Geological Survey

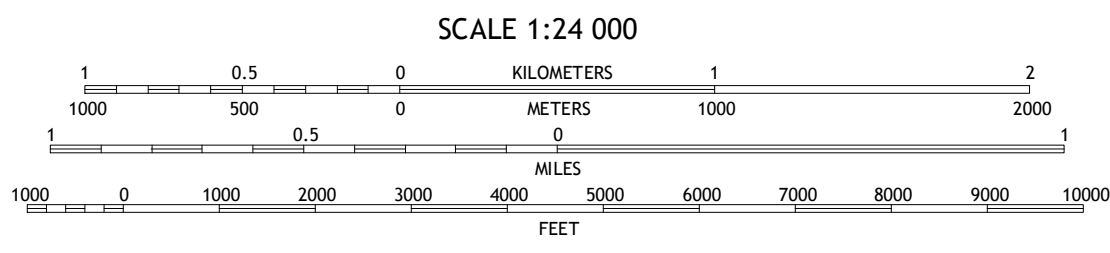
North American Datum of 1983 (NAD83)
World Geodetic System of 1984 (WGS84). Projection and
10 000-foot ticks: Texas Coordinate System of 1983 (south
central zone)

This map is not a legal document. Boundaries may be
generalized for this map scale. Private lands within government
reservations may not be shown. Obtain permission before
entering private lands.

Imagery.....NAIP, October 2014
Roads.....U.S. Census Bureau, 2014 - 2015
Names.....GNIS, 2015
Hydrography.....National Hydrography Dataset, 2014
Contours.....National Elevation Dataset, 2010
Boundaries.....Multiple sources; see metadata file 1972 - 2015
Wetlands.....FWS National Wetlands Inventory 1977 - 2014



U.S. National Grid
100,000-m Square ID
TP
Grid Zone Designation
198



CONTOUR INTERVAL 5 FEET
NORTH AMERICAN VERTICAL DATUM OF 1988

This map was produced to conform with the
National Geospatial Program US Topo Product Standard, 2011.
A metadata file associated with this product is draft version 0.6.19



ROAD CLASSIFICATION	
Expressway	Local Connector
Secondary Hwy	Local Road
Ramp	4WD
Interstate Route	US Route
	State Route

1	2	3
4	5	6
7	8	9

1 Magnolia East
2 Oklahoma
3 Tama
4 Rose Hill
5 Spring
6 Cypress
7 Satusma
8 Aldine

TOMBALL, TX
2016

