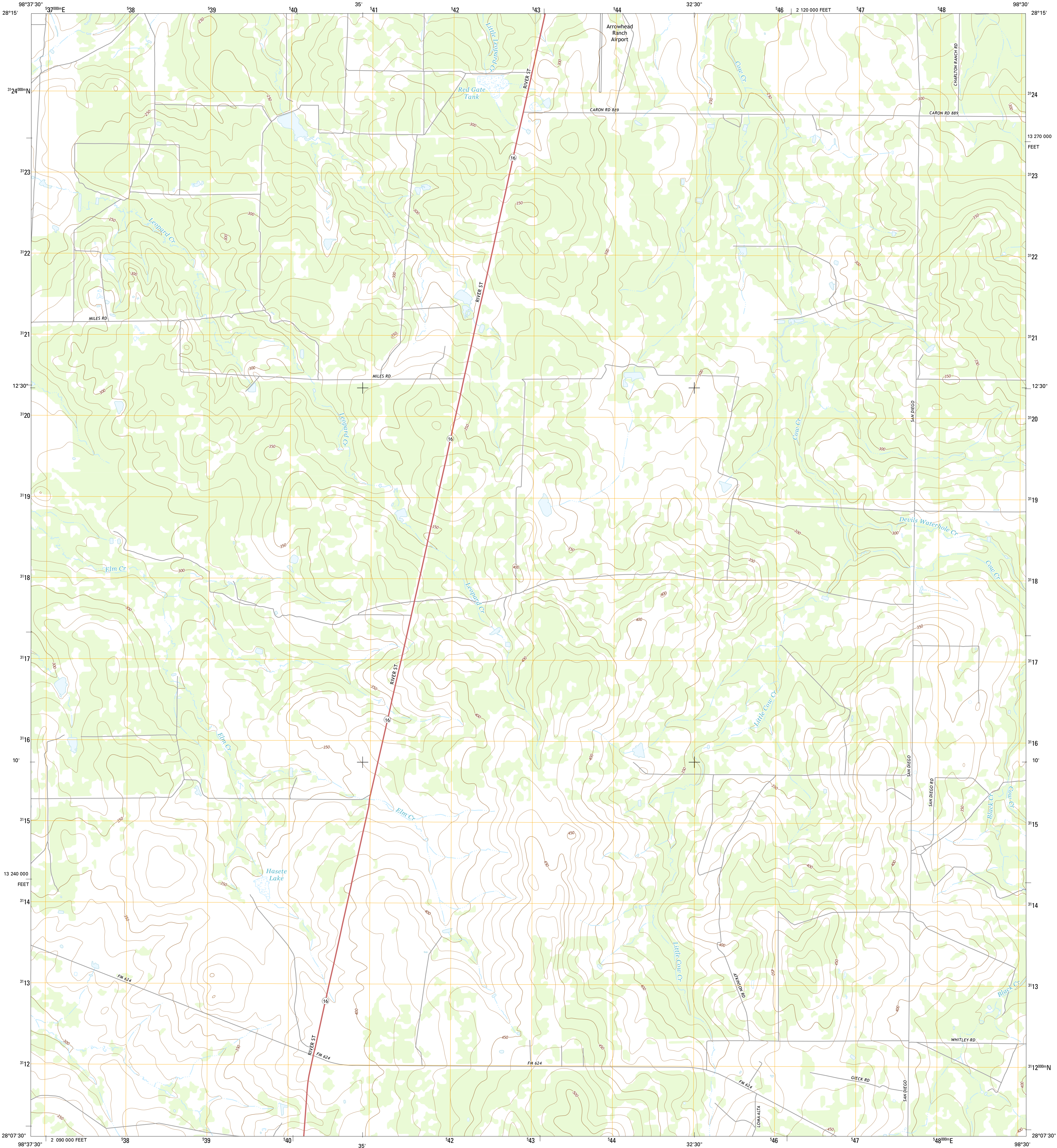




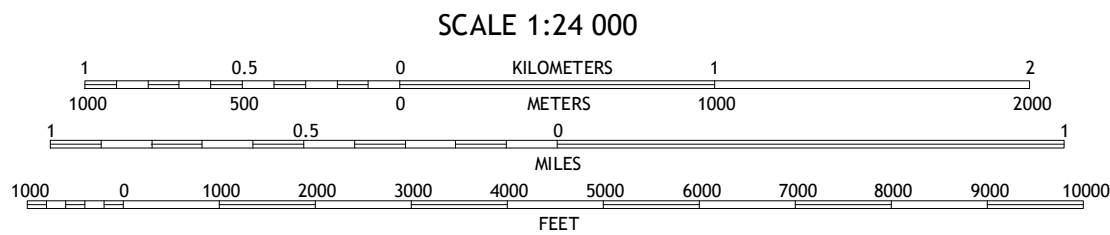
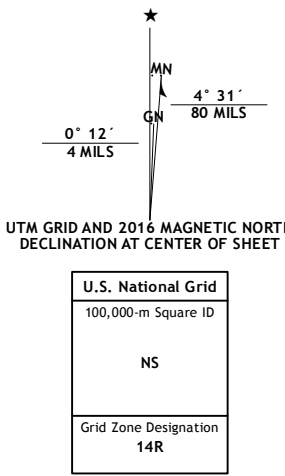
U.S. DEPARTMENT OF THE INTERIOR  
U.S. GEOLOGICAL SURVEY



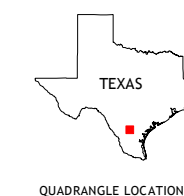
LOMA ALTA NE QUADRANGLE  
TEXAS-MCMULLEN CO.  
7.5-MINUTE SERIES



**Produced by the United States Geological Survey**  
North American Datum of 1983 (NAD83)  
World Geodetic System of 1984 (WGS84). Projection and  
1 000-meter grid: Universal Transverse Mercator, Zone 14R  
10 000-foot ticks: Texas Coordinate System of 1983 (south  
central zone)  
  
This map is not a legal document. Boundaries may be  
generalized for this map scale. Private lands within government  
reservations may not be shown. Obtain permission before  
entering private lands.  
  
Imagery.....NAP, May 2014  
Roads.....U.S. Census Bureau, 2014 - 2015  
Names.....GNIS, 2015  
Hydrography.....National Hydrography Dataset, 2014  
Contours.....National Elevation Dataset, 2008  
Boundaries.....Multiple sources; see metadata file 1972 - 2015  
  
Wetlands.....FWS National Wetlands Inventory 1977 - 2014



CONTOUR INTERVAL 10 FEET  
NORTH AMERICAN VERTICAL DATUM OF 1988  
  
This map was produced to conform with the  
National Geospatial Program US Topo Product Standard, 2011.  
A metadata file associated with this product is draft version 0.6.19



1	2	3	1 Mule Creek
4	5	2 Fitzpatrick Hollow	
6	7	3 San Caja Hill	
		4 Loma Alta NW	
		5 La Chusa Hill	
		6 Mirasol Creek	
		7 Loma Alta	
		8 Clegg SW	

ROAD CLASSIFICATION			
Expressway	Secondary Hwy	Ramp	Local Connector
Interstate Route	US Route	State Route	Local Road
			4WD

LOMA ALTA NE, TX  
2016

