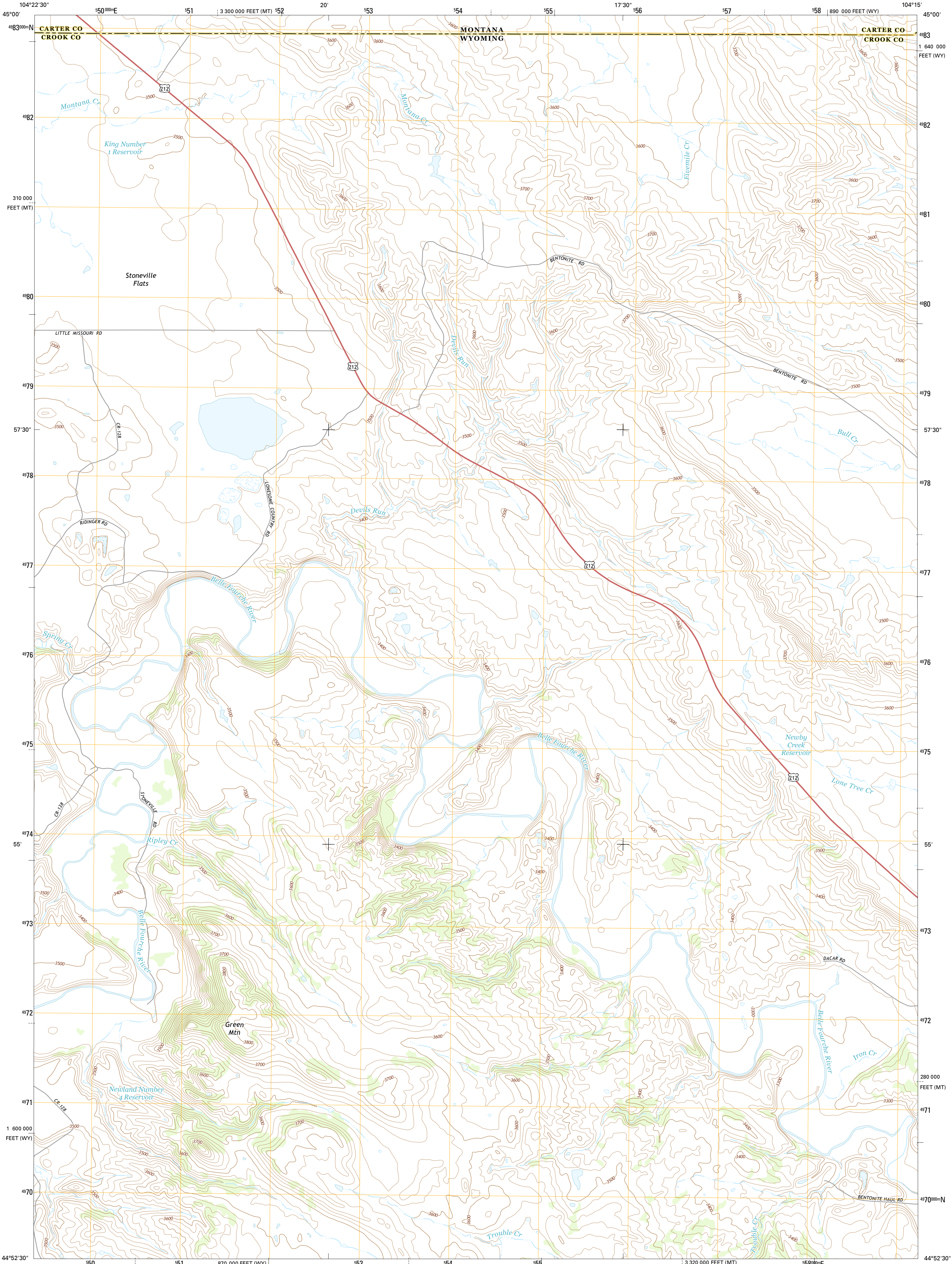




U.S. DEPARTMENT OF THE INTERIOR
U.S. GEOLOGICAL SURVEY



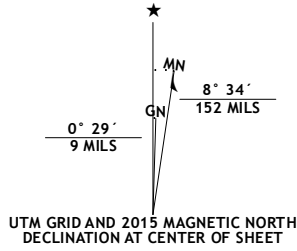
DEVILS RUN QUADRANGLE
WYOMING-MONTANA
7.5-MINUTE SERIES



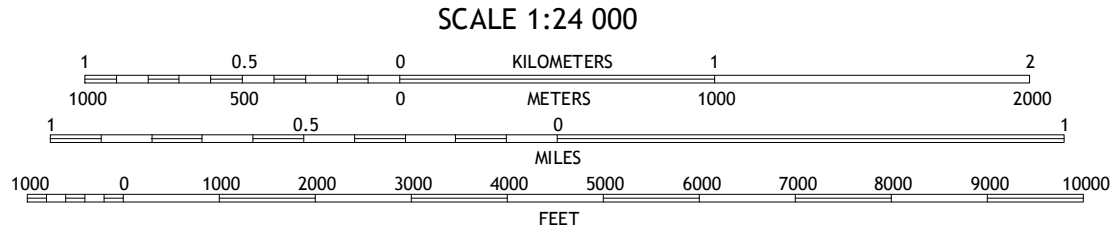
Produced by the United States Geological Survey
North American Datum of 1983 (NAD83)
World Geodetic System of 1984 (WGS84), Projection and
1 000-meter grid: Universal Transverse Mercator, Zone 13T
10 000-foot ticks: Wyoming Coordinate System of 1983 (east
zone), Montana Coordinate System of 1983

This map is not a legal document. Boundaries may be
generalized for this map scale. Private lands within government
reservations may not be shown. Obtain permission before
entering private lands.

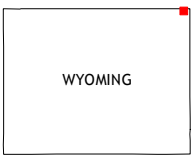
Imagery.....NAIP, July 2013
Roads.....HERE, ©2013 - 2014
Names.....GNIS, 2015
Hydrography.....National Hydrography Dataset, 2013
Contours.....National Elevation Dataset, 2006
Boundaries.....Multiple sources; see metadata file 1972 - 2015
Public Land Survey System.....BLM, 2011



U.S. National Grid 100,000-m Square ID
EK
Grid Zone Designation 13T



CONTOUR INTERVAL 20 FEET
NORTH AMERICAN VERTICAL DATUM OF 1988
This map was produced to conform with the
National Geospatial Program US Topo Product Standards, 2011.
A metadata file associated with this product is draft version 0.6.18



ROAD CLASSIFICATION			
Expressway	Local Connector	Local Road	
Secondary Hwy	Local Road	4WD	
Ramp	Interstate Route	US Route	State Route

1	2	3
4	5	6
7	8	9

ADJOINING QUADRANGLES

DEVILS RUN, WY-MT
2015

