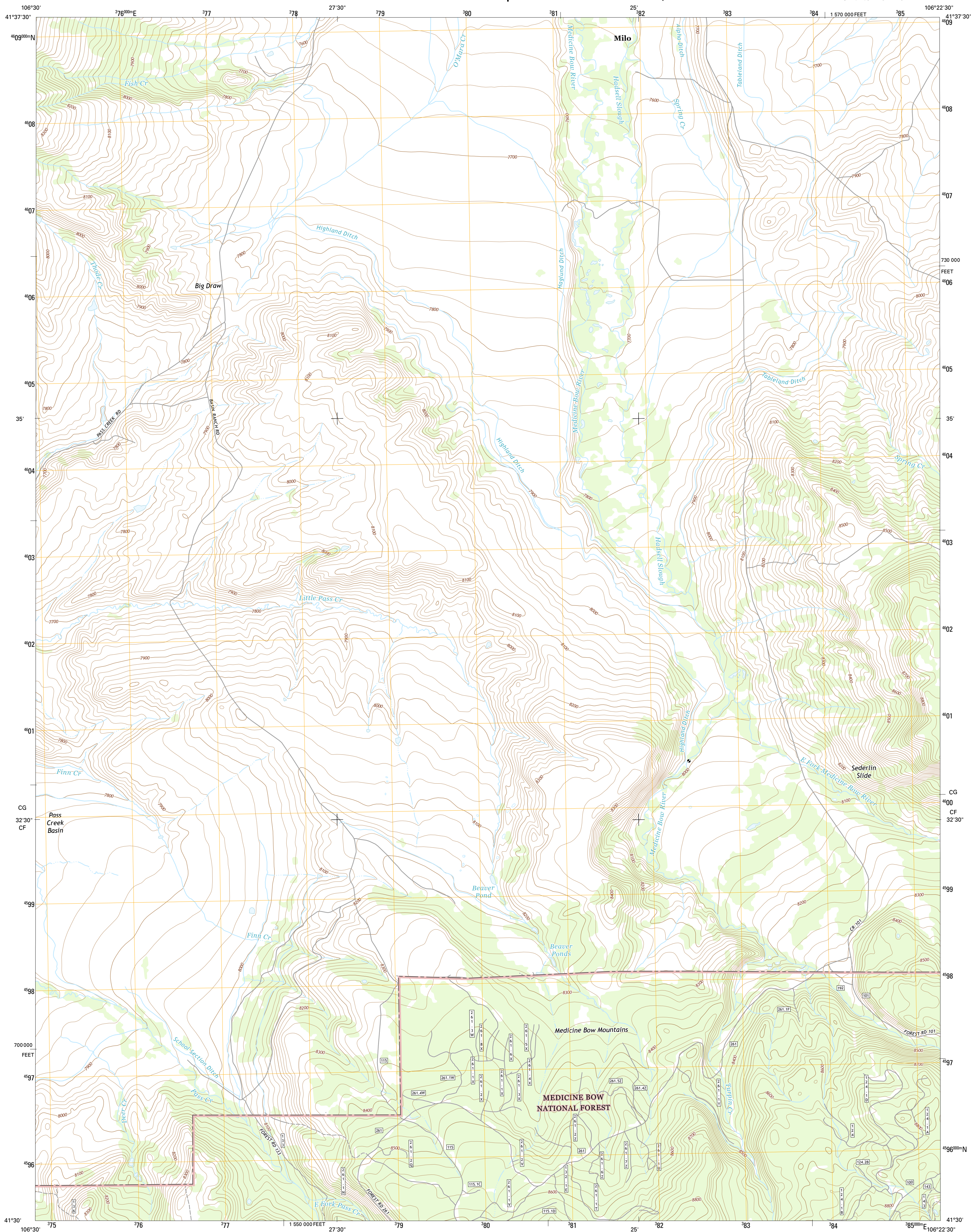




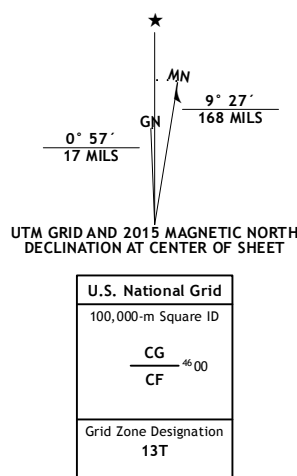
ELK MOUNTAIN SW QUADRANGLE  
WYOMING-CARBON CO.  
7.5-MINUTE SERIES



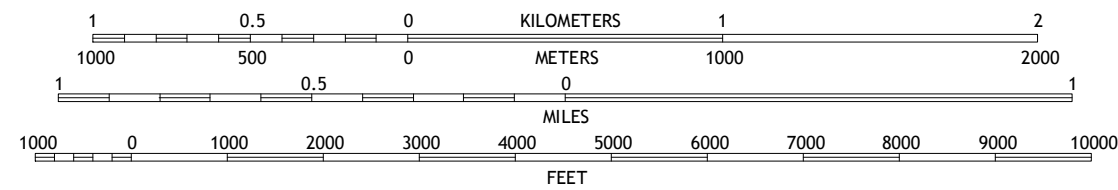
North American Datum of 1983 (NAD83)  
World Geodetic System of 1984 (WGS84). Projection and  
1 000-meter grid: Universal Transverse Mercator, Zone 13T  
10 000-foot ticks: Wyoming Coordinate System of 1983 (east  
central zone)

This map is not a legal document. Boundaries may be generalized for this map scale. Private lands within government reservations may not be shown. Obtain permission before entering private lands.

Imagery.....	NAIP, August 2012
Roads.....	HERE, ©2013 2014
Roads within US Forest Service Lands.....	©Topo with limited Forest Service updates, 2012 - 2015
Names.....	GNIS, 2015
Hydrography.....	National Hydrography Dataset, 2002
Contours.....	National Elevation Dataset, 2006
Boundaries.....	Multiple sources; see metadata file 1972 - 2015
Public Land Survey System.....	BLM, 2011

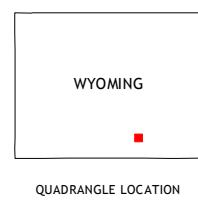


SCALE 1:24 000



CONTOUR INTERVAL 20 FEET  
NORTH AMERICAN VERTICAL DATUM OF 1988

This map was produced to conform with the  
US Geospatial Program US Topo Product Standard, 2011.  
The data file associated with this product is draft version 0.6.18



1	2	3	1 Rattlesnake Pass
4		5	2 Elk Mountain
6	7	8	3 T L Ranch
			4 Coad Mountain
			5 White Rock Canyon
			6 Kennaday Peak
			7 Turpin Reservoir
			8 Sand Lake

### ROAD CLASSIFICATION

<p>Expressway <span style="color: red; font-weight: bold;">—————</span></p> <p>Secondary Hwy <span style="color: red; font-weight: bold;">=====</span></p> <p>Ramp <span style="color: red; font-weight: bold;">—————</span></p>	<p>Local Connector <span style="color: gray; font-weight: bold;">—————</span></p> <p>Local Road <span style="color: gray; font-weight: bold;">=====</span></p> <p>4WD <span style="color: gray; font-weight: bold;">- - - - -</span></p>
<p> Interstate Route</p> <p> FS Primary Route</p>	<p> US Route</p> <p> FS Passenger Route</p>
<p> State Route</p> <p> FS High Clearance Route</p>	

Check with local Forest Service unit  
for current travel conditions and restrictions.

ELK MOUNTAIN SW, WY  
2015

