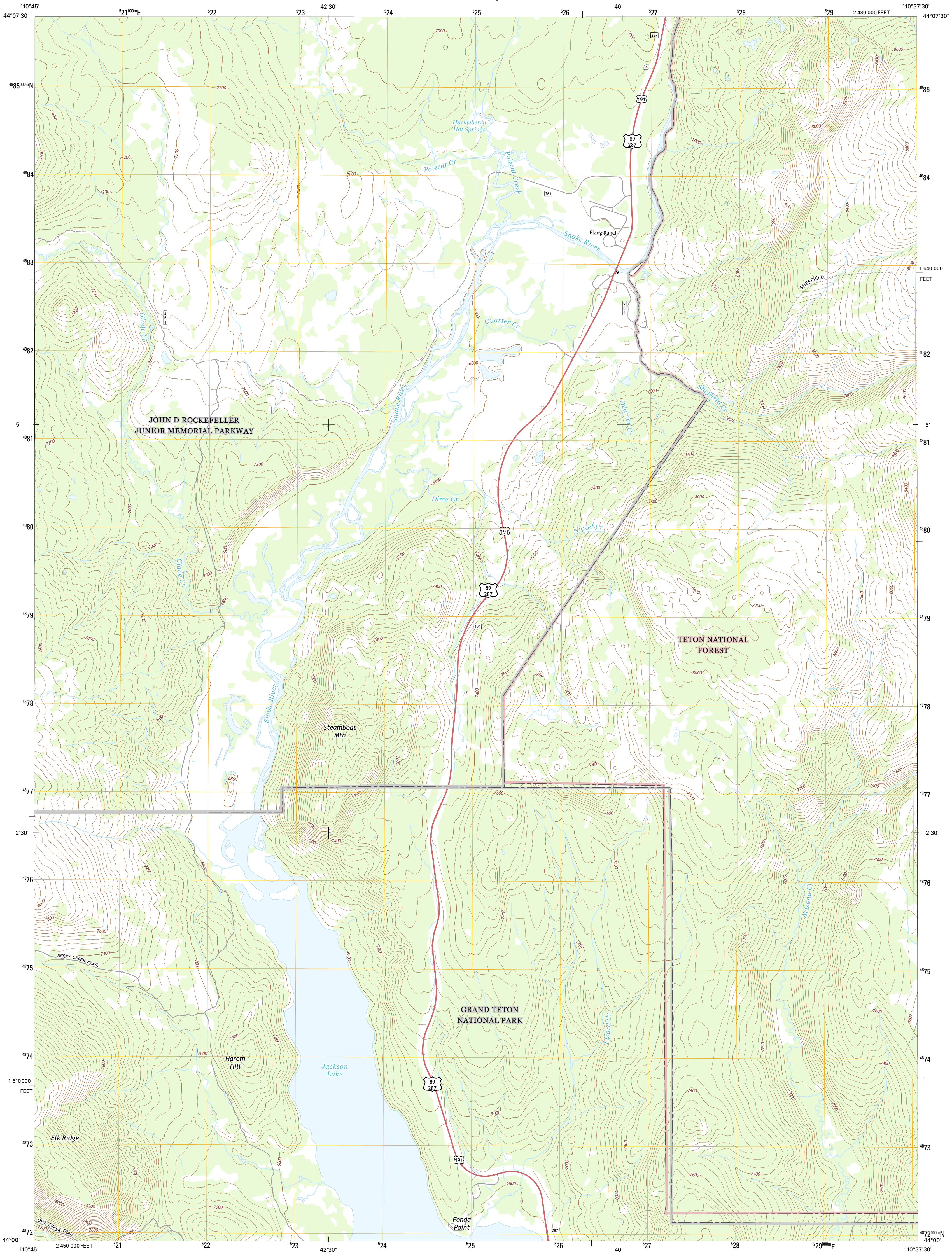




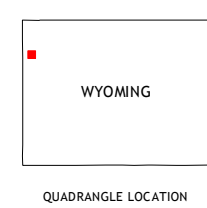
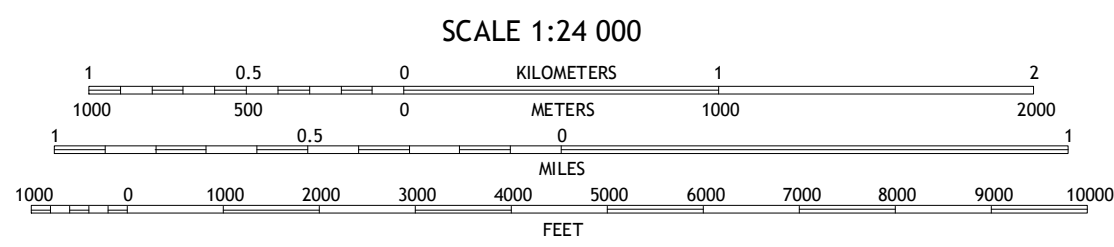
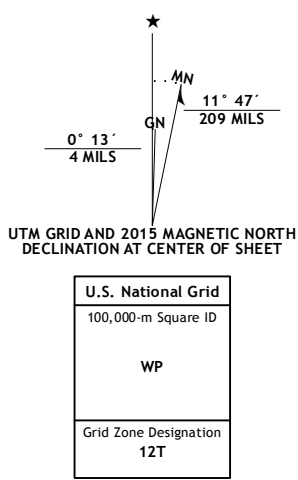
U.S. DEPARTMENT OF THE INTERIOR  
U.S. GEOLOGICAL SURVEY



FLAGG RANCH QUADRANGLE  
WYOMING-TETON CO.  
7.5-MINUTE SERIES



**Produced by the United States Geological Survey**  
North American Datum of 1983 (NAD83)  
World Geodetic System of 1984 (WGS84), Projection and  
1 000-meter grid: Universal Transverse Mercator, Zone 12T  
10 000-foot ticks: Wyoming Coordinate System of 1983 (west zone)  
This map is not a legal document. Boundaries may be  
generalized for this map scale. Private lands within government  
reservations may not be shown. Obtain permission before  
entering private lands.  
Imagery.....NAIP, August 2012  
Roads.....HERE, ©2013 - 2014  
Roads within US Forest Service Lands.....FSTopo Data  
with limited Forest Service updates, 2012 - 2015  
Names.....National Hydrography Dataset, 2012  
Contours.....National Elevation Dataset, 1999  
Boundaries.....Multiple sources; see metadata file 1972 - 2015  
Public Land Survey System.....BLM, 2011



| ROAD CLASSIFICATION |                 |                         |                    |
|---------------------|-----------------|-------------------------|--------------------|
| Expressway          | Local Connector | Interstate Route        | US Route           |
| Secondary Hwy       | Local Road      | FS Primary Route        | FS Passenger Route |
| Ramp                | 4WD             | FS High Clearance Route | State Route        |

Check with local Forest Service unit  
for current travel conditions and restrictions.

FLAGG RANCH, WY  
2015

|   |   |   |
|---|---|---|
| 1 | 2 | 3 |
| 4 | 5 | 6 |
| 7 | 8 | 9 |

ADJOINING QUADRANGLES

- 1 Grassy Lake Reservoir
- 2 Lewis Canyon
- 3 Snake Hot Springs
- 4 Survey Peak
- 5 Huckleberry Mountain
- 6 Ranger Peak
- 7 Colter Bay
- 8 Two Ocean Lake

