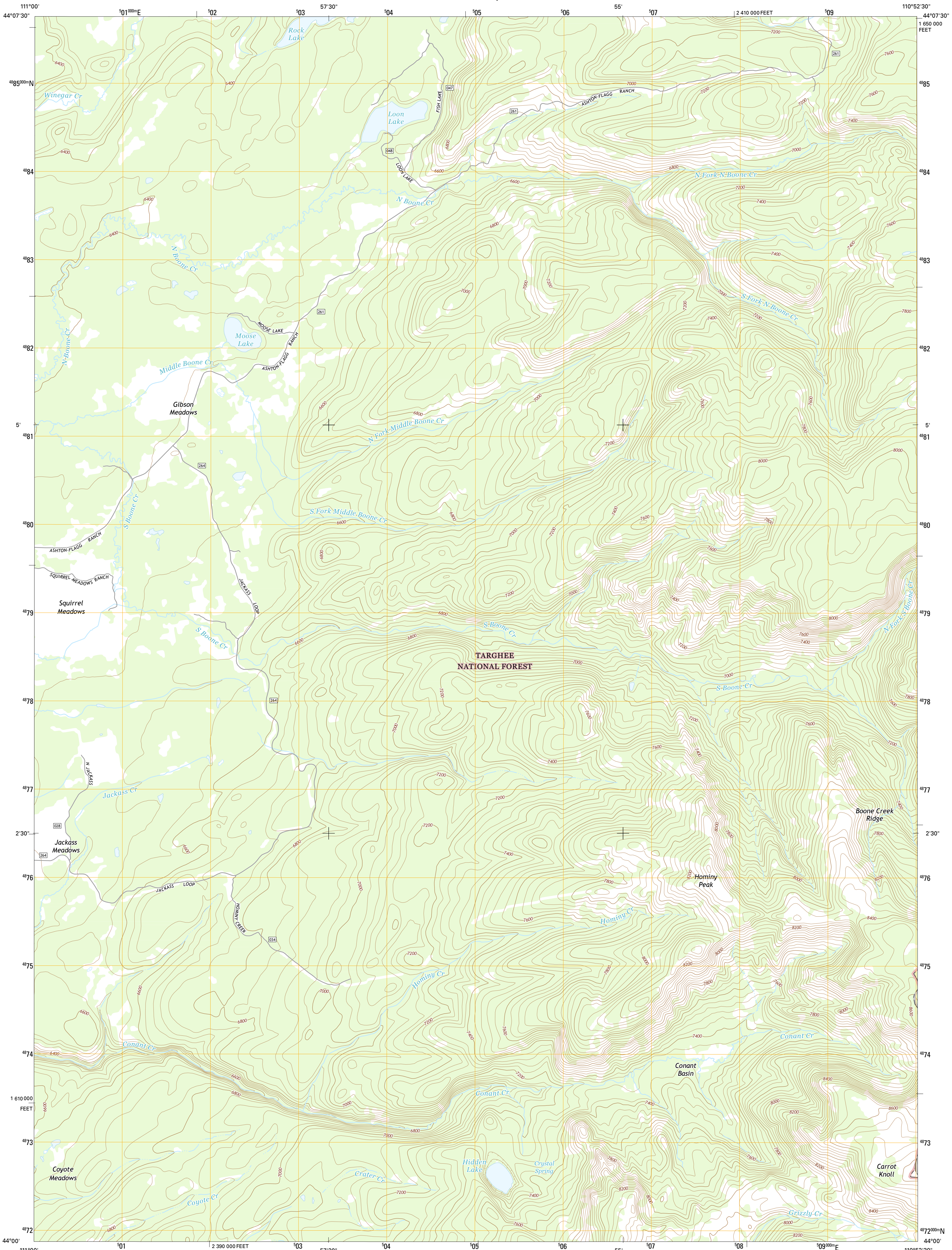




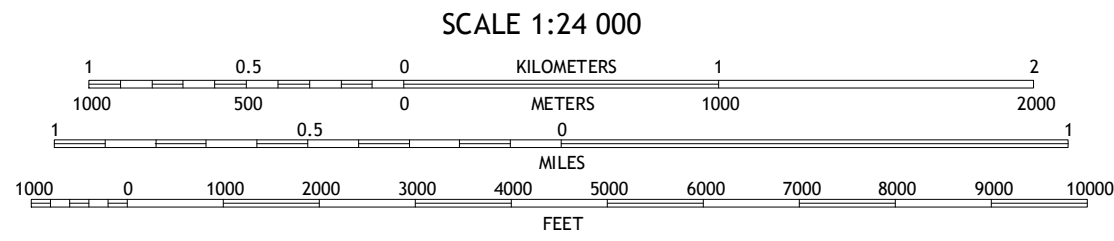
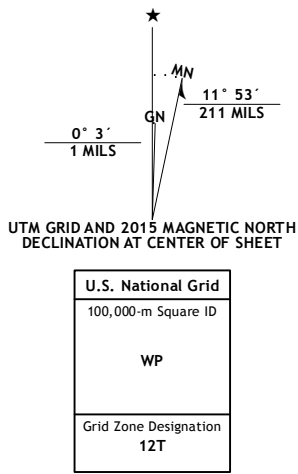
U.S. DEPARTMENT OF THE INTERIOR
U.S. GEOLOGICAL SURVEY



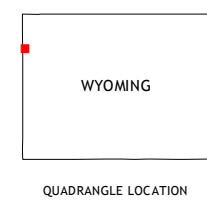
HOMINY PEAK QUADRANGLE
WYOMING-TETON CO.
7.5-MINUTE SERIES



Produced by the United States Geological Survey
North American Datum of 1983 (NAD83)
World Geodetic System of 1984 (WGS84), Projection and
1 000-meter grid: Universal Transverse Mercator, Zone 12T
10 000-foot ticks: Wyoming Coordinate System of 1983 (west
zone)
This map is not a legal document. Boundaries may be
generalized for this map scale. Private lands within government
reservations may not be shown. Obtain permission before
entering private lands.
Imagery.....NAIP, July 2012
Roads.....HERE, ©2013 - 2014
Roads within US Forest Service Lands.....FSTopo Data
with limited Forest Service updates, 2012 - 2015
Names.....National Hydrography Dataset, 2015
Hydrography.....National Hydrography Dataset, 2012
Contours.....National Elevation Dataset, 1999
Boundaries.....Multiple sources; see metadata file 1972 - 2015
Public Land Survey System.....BLM, 2011



CONTOUR INTERVAL 40 FEET
NORTH AMERICAN VERTICAL DATUM OF 1988
This map was produced to conform with the
National Geospatial Program US Topo Product Standard, 2011.
A metadata file associated with this product is draft version 0.6.18



ROAD CLASSIFICATION			
Expressway	Local Connector	US Route	State Route
Secondary Hwy	Local Road	FS Passenger Route	FS High Clearance Route
Ramp	4WD		
Interstate Route			
FS Primary Route			

Check with local Forest Service unit
for current travel conditions and restrictions.

1	2	3
4	5	6
7	8	

ADJOINING QUADRANGLES

- 1 Becher Falls
- 2 Cave Falls
- 3 Grassy Lake Reservoir
- 4 Sheep Falls
- 5 Survey Peak
- 6 McRenolds Reservoir
- 7 Ramnell Mountain
- 8 Ranger Peak

HOMINY PEAK, WY
2015

