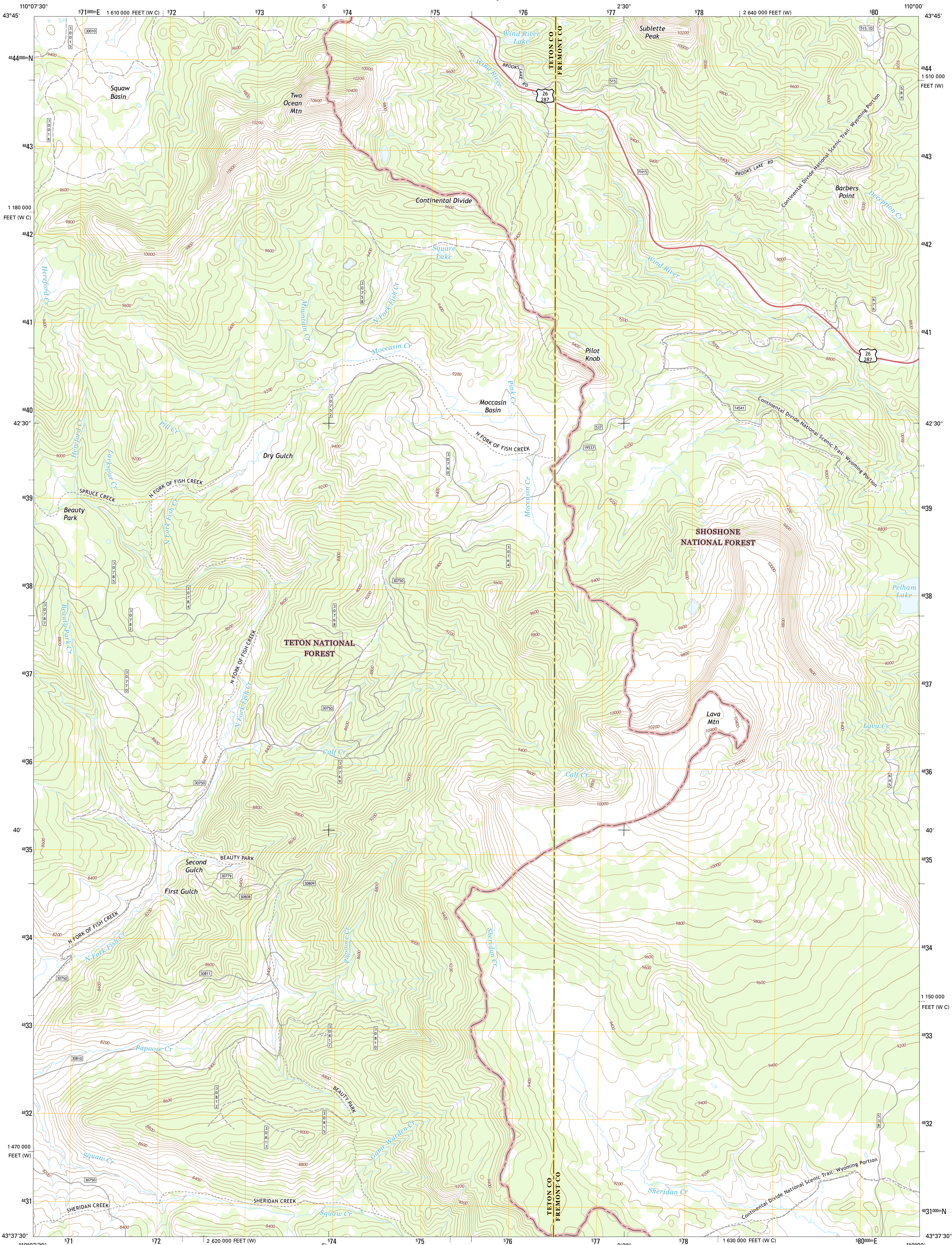




U.S. DEPARTMENT OF THE INTERIOR
U.S. GEOLOGICAL SURVEY



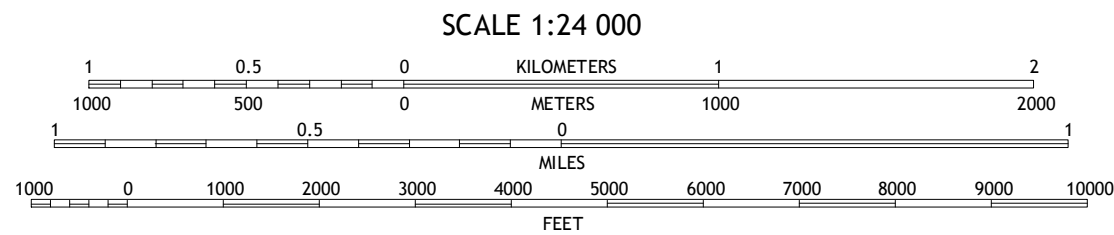
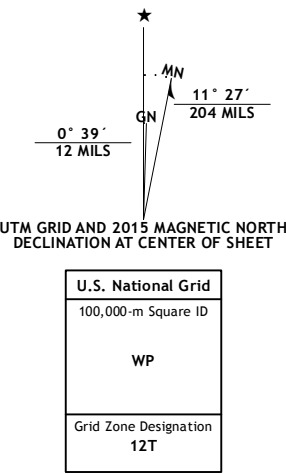
LAVA MOUNTAIN QUADRANGLE
WYOMING
7.5-MINUTE SERIES



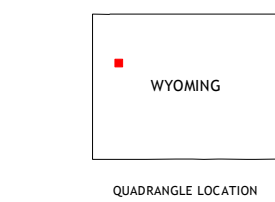
Produced by the United States Geological Survey
North American Datum of 1983 (NAD83)
World Geodetic System of 1984 (WGS84). Projection and
1000-meter grid: Universal Transverse Mercator, Zone 12T
10 000-foot ticks: Wyoming Coordinate System of 1983 (west
and west central zones)

This map is not a legal document. Boundaries may be
generalized for this map scale. Private lands within government
reservations may not be shown. Obtain permission before
entering private lands.

Imagery.....NAIP, August 2012
Roads.....HERE, ©2013 - 2014
Roads within US Forest Service Lands.....FS Topo Data
with limited Forest Service updates, 2012 - 2015
Names.....National Hydrography Dataset, 2015
Contours.....National Elevation Dataset, 2000
Boundaries.....Multiple sources; see metadata file 1972 - 2015
Public Land Survey System.....BLM, 2011



CONTOUR INTERVAL 40 FEET
NORTH AMERICAN VERTICAL DATUM OF 1988
This map was produced to conform with the
National Geospatial Program US Topo Product Standard, 2011.
A metadata file associated with this product is draft version 0.6.18



1	2	3
4	5	6
7	8	9

ROAD CLASSIFICATION
Expressway
Secondary Hwy
Ramp
Interstate Route
US Route
State Route
FS Primary Route
FS Passenger Route
FS High Clearance Route
Local Connector
Local Road
4WD
Check with local Forest Service unit
for current travel conditions and restrictions.

LAVA MOUNTAIN, WY
2015

