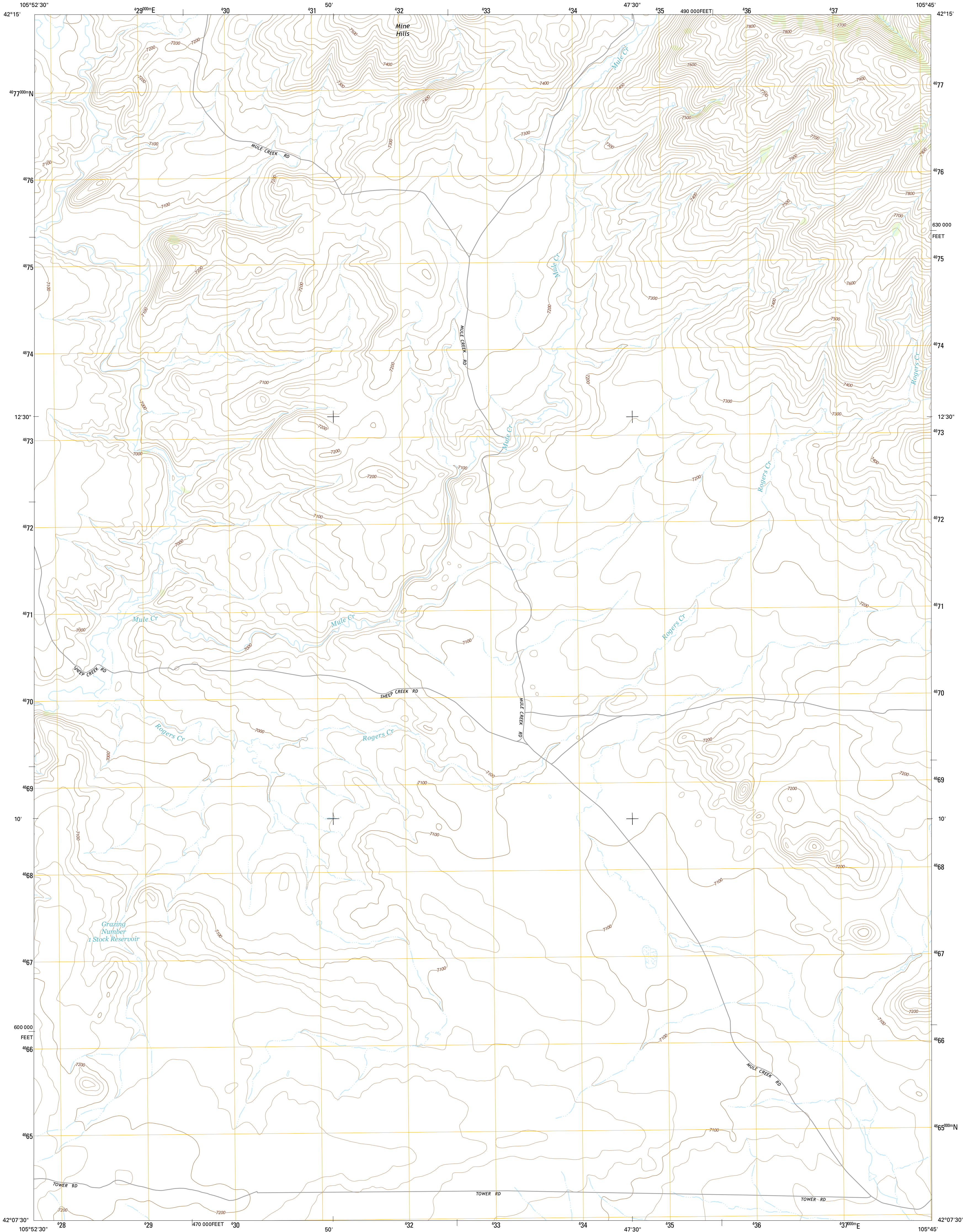




U.S. DEPARTMENT OF THE INTERIOR
U.S. GEOLOGICAL SURVEY



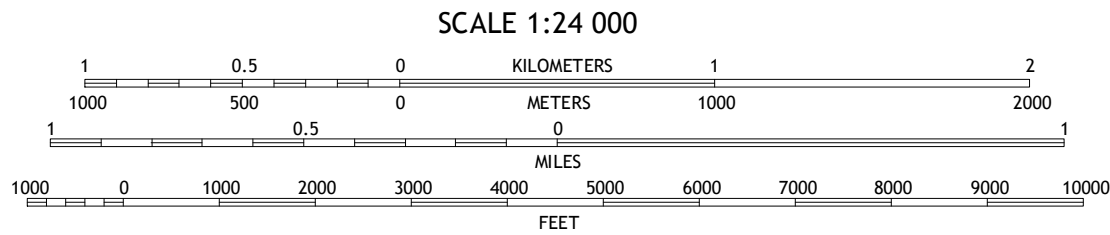
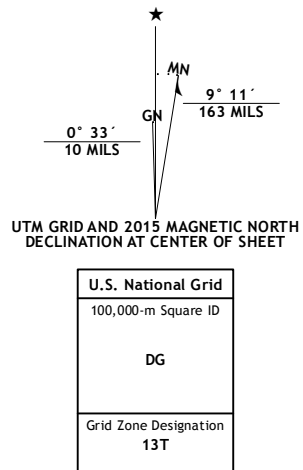
ROGERS CREEK QUADRANGLE
WYOMING-ALBANY CO.
7.5-MINUTE SERIES



Produced by the United States Geological Survey
North American Datum of 1983 (NAD83)
World Geodetic System of 1984 (WGS84). Projection and
1 000-meter grid; Universal Transverse Mercator, Zone 13T
10 000-foot ticks; Wyoming Coordinate System of 1983 (east
zone)

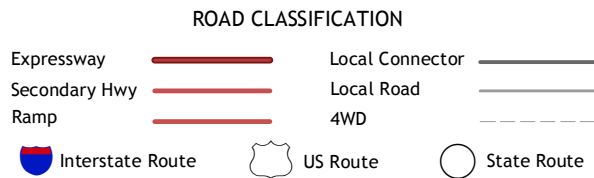
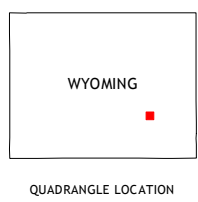
This map is not a legal document. Boundaries may be
generalized for this map scale. Private lands within government
reservations may not be shown. Obtain permission before
entering private lands.

Imagery.....N.A.I.P., June 2012
Roads.....HERE, 02/013 - 2014
Names.....GNIS, 2015
Hydrography.....National Hydrography Dataset, 2012
Contours.....National Elevation Dataset, 2007
Boundaries.....Multiple sources; see metadata file 1972 - 2015
Public Land Survey System.....BLM, 2011



CONTOUR INTERVAL 20 FEET
NORTH AMERICAN VERTICAL DATUM OF 1988

This map was produced to conform with the
National Geospatial Program US Topo Product Standard, 2011.
A metadata file associated with this product is draft version 0.6.18



1	2	3	1 Pass Creek
4	5	2 Marshall	
6	7	3 Toltz	
		4 Boot Heel	
		5 Cottonwood Creek	
		6 Greasewood Knoll	
		7 Boot Heel SE	
		8 Pinto Creek	

ADJOINING QUADRANGLES

ROGERS CREEK, WY
2015

