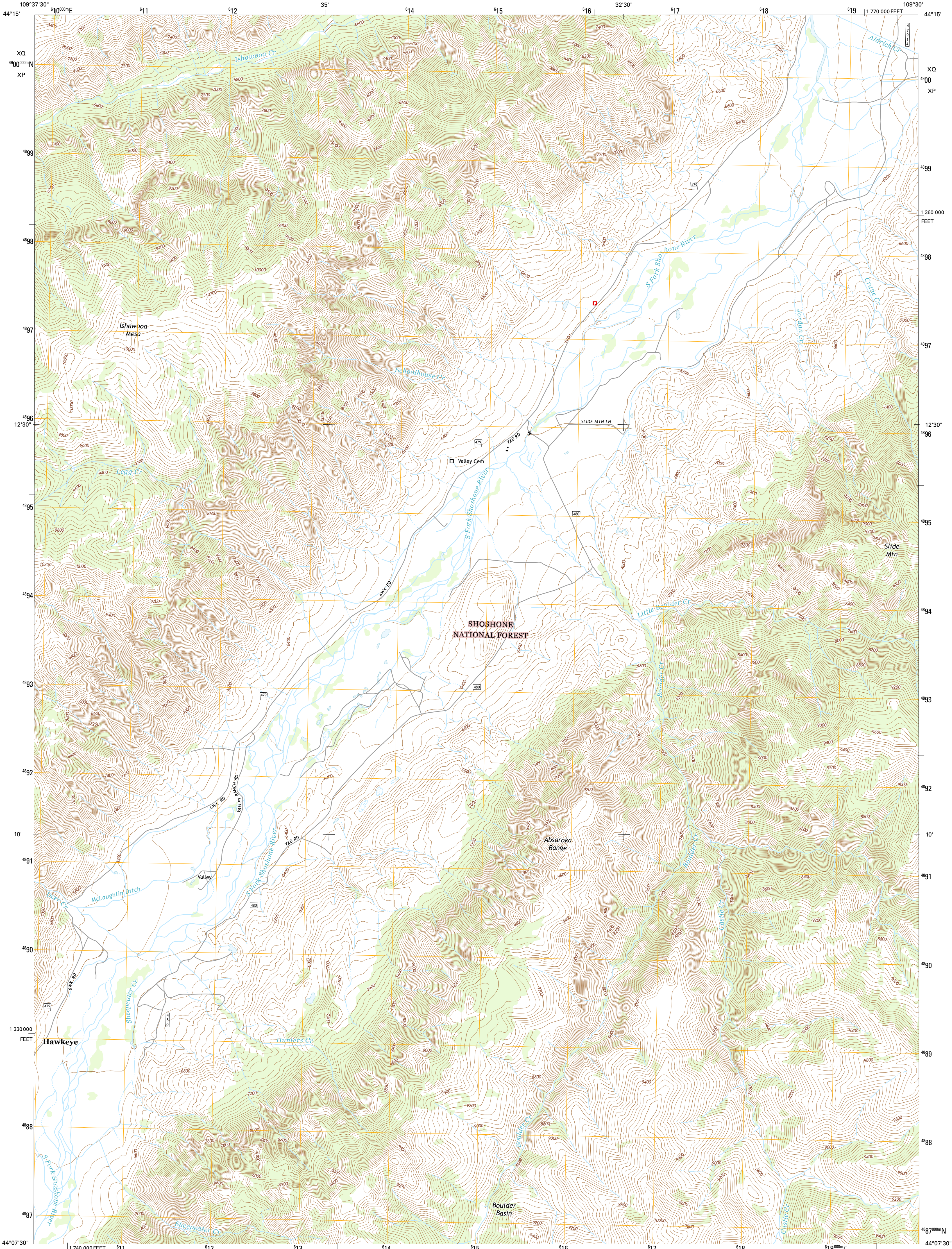




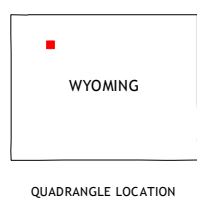
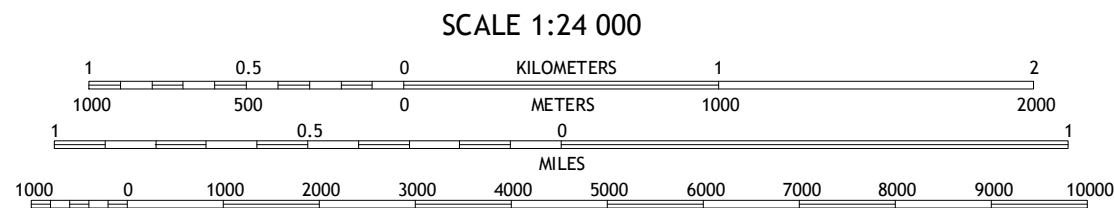
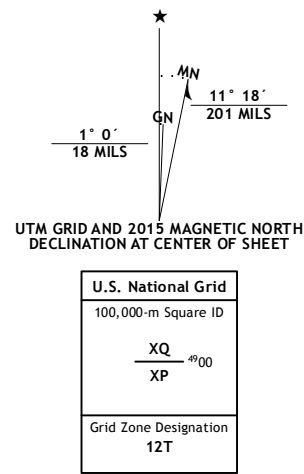
U.S. DEPARTMENT OF THE INTERIOR  
U.S. GEOLOGICAL SURVEY



VALLEY QUADRANGLE  
WYOMING-PARK CO.  
7.5-MINUTE SERIES



Produced by the United States Geological Survey  
North American Datum of 1983 (NAD83)  
World Geodetic System of 1984 (WGS84), Projection and  
1 000-meter grid: Universal Transverse Mercator, Zone 12T  
10 000-foot ticks: Wyoming Coordinate System of 1983 (west  
central zone)  
This map is not a legal document. Boundaries may be  
generalized for this map scale. Private lands within government  
reservations may not be shown. Obtain permission before  
entering private lands.  
Imagery.....NAIP, August 2012  
Roads.....HERE, ©2013 - 2014  
Roads within US Forest Service Lands.....FSTopo Data  
with limited Forest Service updates, 2012 - 2015  
Names.....GNIS, 2015  
Hydrography.....National Hydrography Dataset, 2012  
Contours.....National Elevation Dataset, 2000  
Boundaries.....Multiple sources: see metadata file 1972 - 2015  
Public Land Survey System.....BLM, 2011



ROAD CLASSIFICATION  
Expressway  
Secondary Hwy  
Ramp  
Interstate Route  
FS Primary Route  
Local Connector  
Local Road  
4WD  
US Route  
FS Passenger Route  
State Route  
FS High Clearance Route  
Check with local Forest Service unit  
for current travel conditions and restrictions.

1	2	3
4	5	6
7	8	9

ADJOINING QUADRANGLES

1 Lake Creek  
2 Ptarmigan Mountain  
3 Twin Creek  
4 Clouds Home Peak  
5 Aldrich Basin  
6 Fall Creek  
7 Needle Mountain  
8 Irish Rock

VALLEY, WY  
2015

