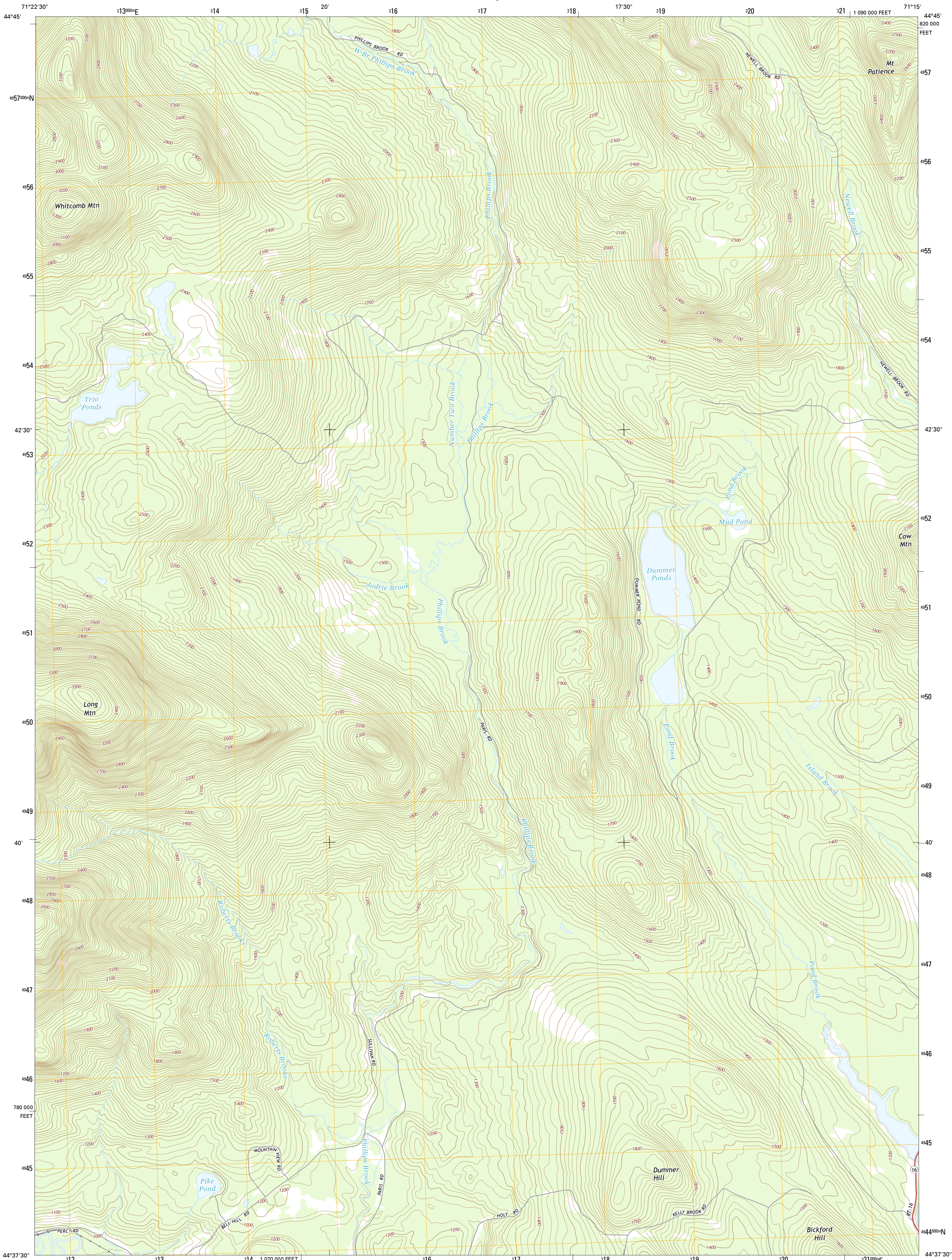




U.S. DEPARTMENT OF THE INTERIOR
U.S. GEOLOGICAL SURVEY



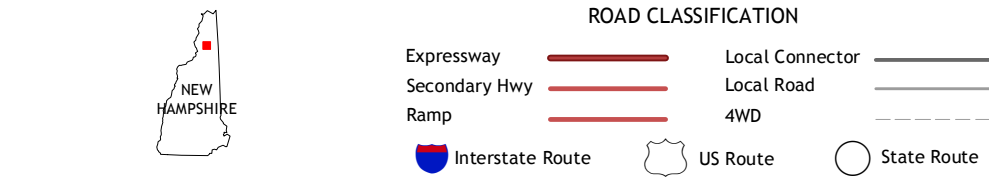
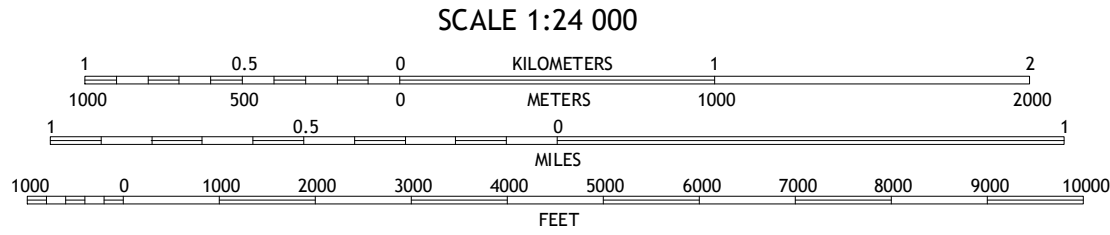
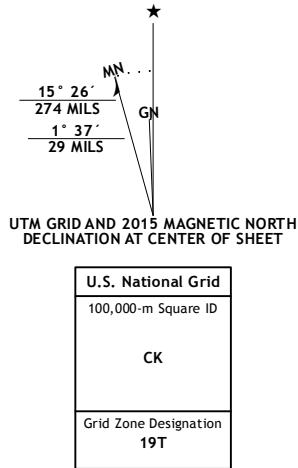
DUMMER PONDS QUADRANGLE
NEW HAMPSHIRE-COOS CO.
7.5-MINUTE SERIES



Produced by the United States Geological Survey
North American Datum of 1983 (NAD83)
World Geodetic System of 1984 (WGS84). Projection and
1 000-meter grid: Universal Transverse Mercator, Zone 19T
10 000-foot ticks: New Hampshire Coordinate System of 1983

This map is not a legal document. Boundaries may be
generalized for this map scale. Private lands within government
reservations may not be shown. Obtain permission before
entering private lands.

Imagery.....NAIP, July 2012
Roads.....HERE, 2013
Names.....GNIS, 2015
Hydrography.....National Hydrography Dataset, 2012
Contours.....National Elevation Dataset, 2007
Boundaries.....Multiple sources; see metadata file 1972 - 2015



1	2	3
4	5	6
7	8	9

ADJOINING QUADRANGLES

1 Bunnell Mountain
2 Dixville Notch
3 Errol
4 Percy Peaks
5 Teakettle Ridge
6 Stark
7 West Milan
8 Milan

DUMMER PONDS, NH
2015

