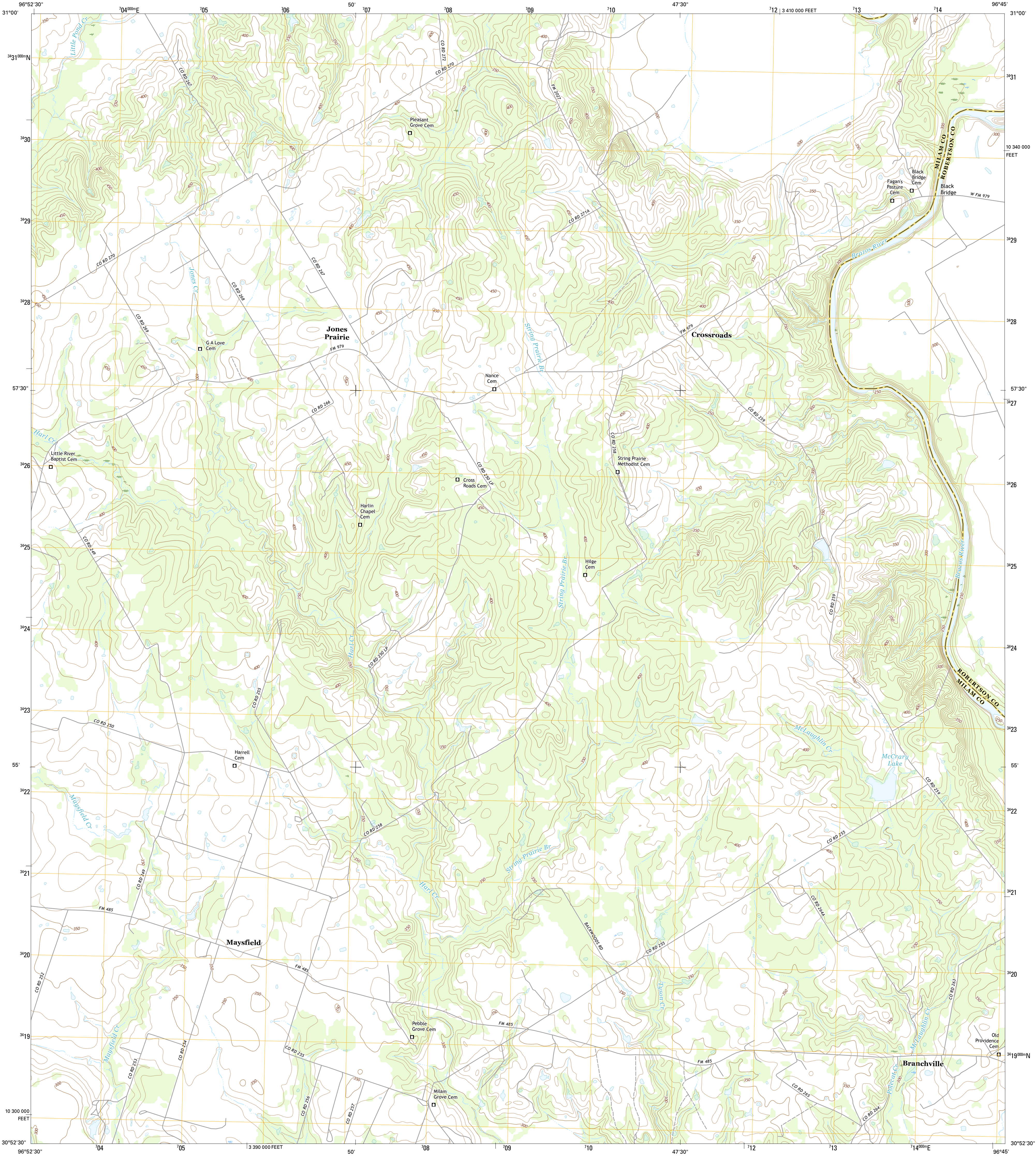




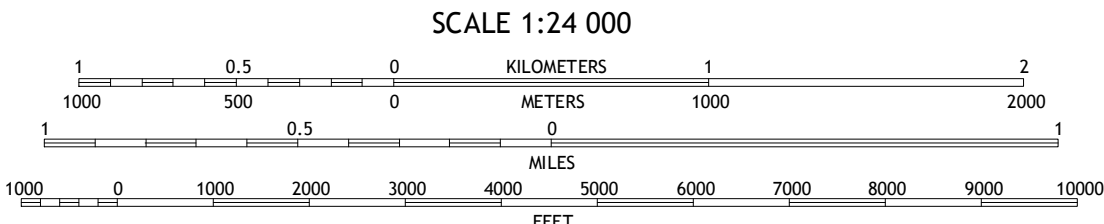
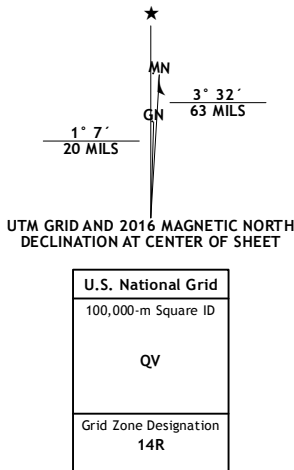
U.S. DEPARTMENT OF THE INTERIOR  
U.S. GEOLOGICAL SURVEY



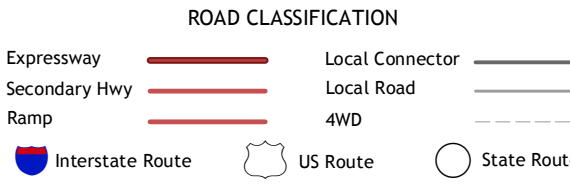
MAYSFIELD QUADRANGLE  
TEXAS  
7.5-MINUTE SERIES



Produced by the United States Geological Survey  
North American Datum of 1983 (NAD83)  
World Geodetic System of 1984 (WGS84). Projection and  
1 000-meter grid: Universal Transverse Mercator, Zone 14R  
10 000-foot ticks: Texas Coordinate System of 1983 (central  
zone)  
This map is not a legal document. Boundaries may be  
generalized for this map scale. Private lands within government  
reservations may not be shown. Obtain permission before  
entering private lands.  
Imagery.....NAIP, August 2014  
Roads.....U.S. Census Bureau, 2014  
Names.....GNIS, 2015  
Hydrography.....National Hydrography Dataset, 2014  
Contours.....National Elevation Dataset, 2004  
Boundaries.....Multiple sources; see metadata file 1972-2015  
Wetlands.....FWS National Wetlands Inventory 1977-2014



CONTOUR INTERVAL 10 FEET  
NORTH AMERICAN VERTICAL DATUM OF 1988  
This map was produced to conform with the  
National Geospatial Program US Topo Product Standard, 2011.  
A metadata file associated with this product is draft version 0.6.19



1	2	3
4	5	6
7	8	9

1 Rosebud  
2 Baileyville  
3 Hammond  
4 Ben Arnold  
5 Calvert  
6 Cameron  
7 Harover  
8 Gause

MAYSFIELD, TX  
2016

