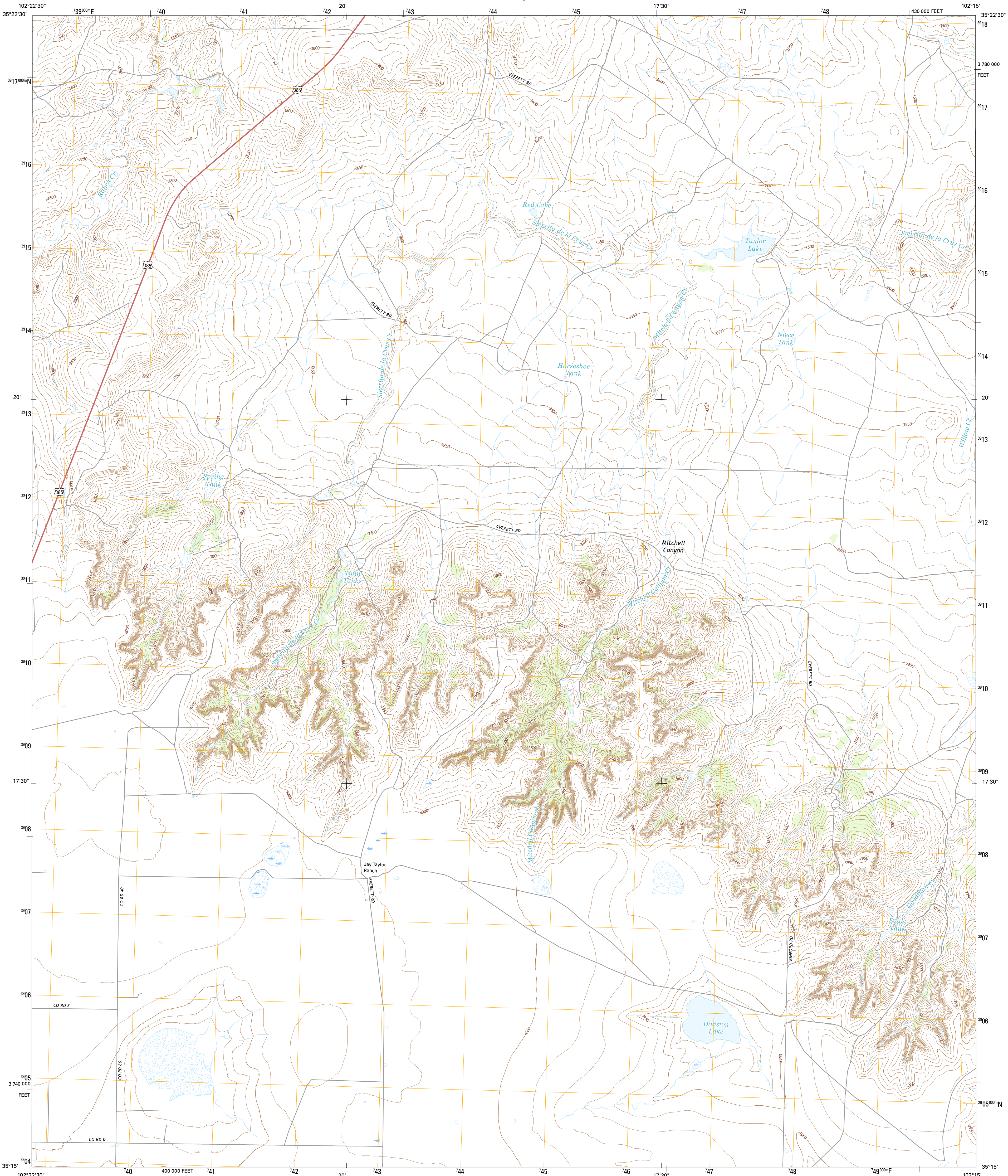




U.S. DEPARTMENT OF THE INTERIOR
U.S. GEOLOGICAL SURVEY



JAY TAYLOR RANCH QUADRANGLE
TEXAS-OLDHAM CO.
7.5-MINUTE SERIES

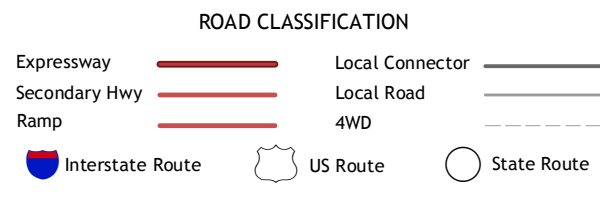
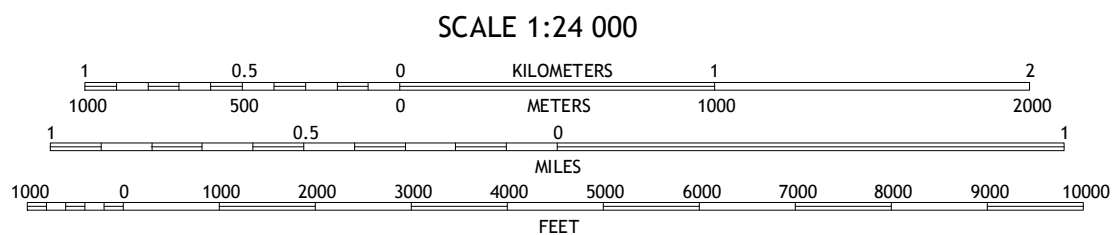
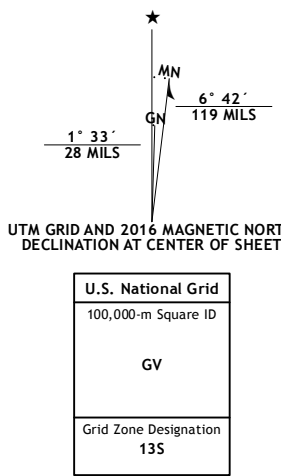


Produced by the United States Geological Survey
North American Datum of 1983 (NAD83)
World Geodetic System of 1984 (WGS84) - Projection and
1 000-meter grid: Universal Transverse Mercator, Zone 13S
10 000-foot ticks: Texas Coordinate System of 1983 (north zone)

This map is not a legal document. Boundaries may be
generalized for this map scale. Private lands within government
reservations may not be shown. Obtain permission before
entering private lands.

Imagery.....NAIP, September 2014
Roads.....U.S. Census Bureau, 2014 - 2015
Names.....GNIS, 2015
Hydrography.....National Hydrography Dataset, 2014
Contours.....National Elevation Dataset, 2002
Boundaries.....Multiple sources; see metadata file 1972 - 2015

Wetlands.....FWS National Wetlands Inventory 1977 - 2014



1	2	3
4	5	6
7	8	9

1 Torrey Peak
2 Halfway Creek
3 Ady
4 Vega North
5 Rotten Hill
6 Vega South
7 Everett
8 Wildorado

JAY TAYLOR RANCH, TX
2016

