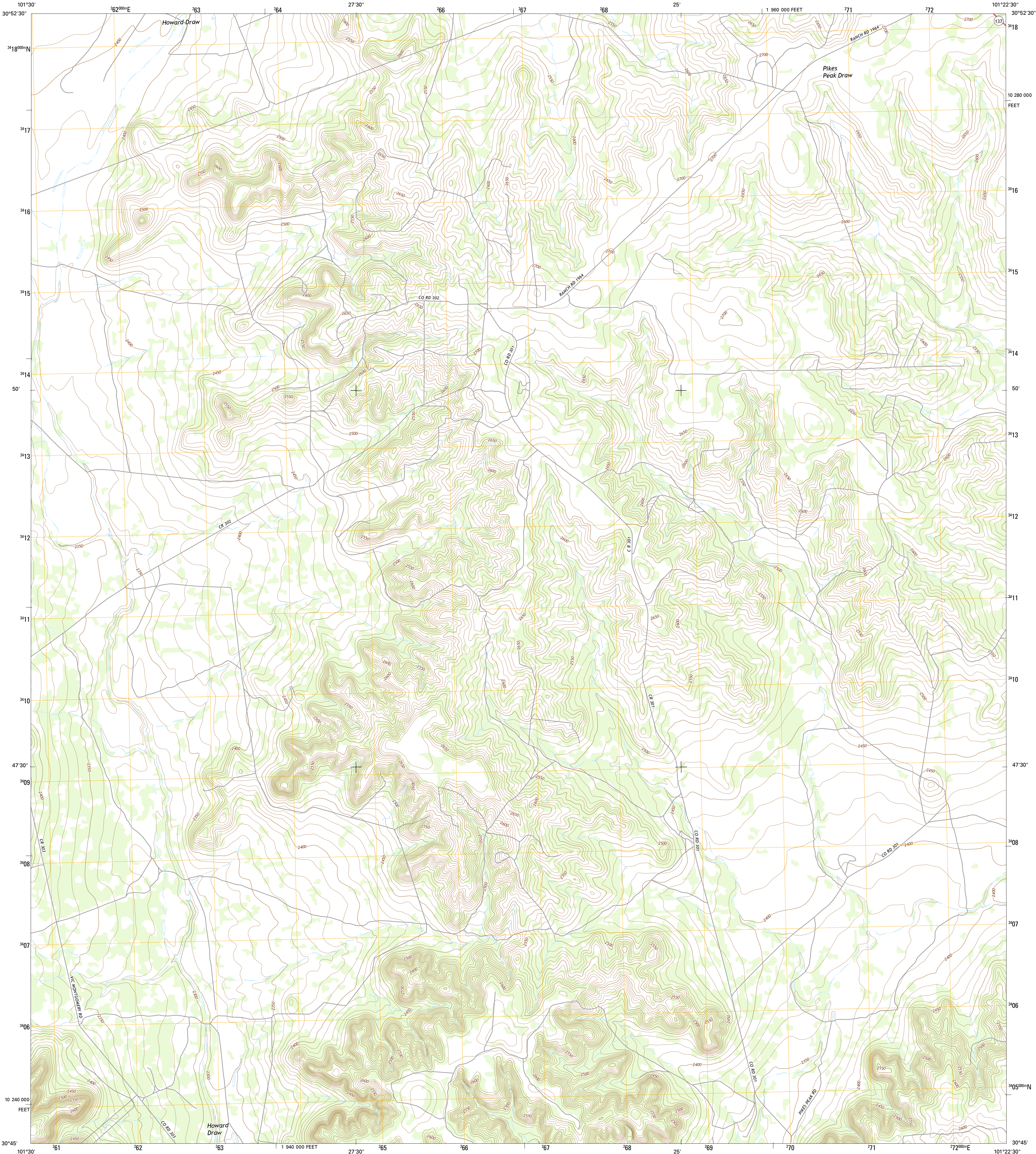




U.S. DEPARTMENT OF THE INTERIOR  
U.S. GEOLOGICAL SURVEY



SCHNEEMAN DRAW SW QUADRANGLE  
TEXAS-CROCKETT CO.  
7.5-MINUTE SERIES



Produced by the United States Geological Survey  
North American Datum of 1983 (NAD83)  
World Geodetic System of 1984 (WGS84). Projection and  
1 000-meter grid: Universal Transverse Mercator, Zone 14R  
10 000-foot ticks: Texas Coordinate System of 1983 (central  
zone)  
This map is not a legal document. Boundaries may be  
generalized for this map scale. Private lands within government  
reservations may not be shown. Obtain permission before  
entering private lands.  
Imagery.....NAIP, August 2014  
Roads.....U.S. Census Bureau, 2014 - 2015  
Names.....GNIS, 2015  
Hydrography.....National Hydrography Dataset, 2014  
Contours.....National Elevation Dataset, 2006  
Boundaries.....Multiple sources; see metadata file 1972 - 2015  
Wetlands.....FWS National Wetlands Inventory 1977 - 2014

1" = 15' = 22 MILES

6" = 1' = 107 MILES

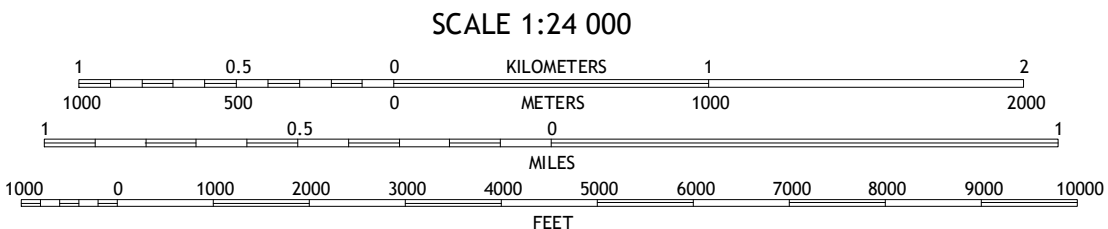
UTM GRID AND 2016 MAGNETIC NORTH DECLINATION AT CENTER OF SHEET

U.S. National Grid

100,000-m Square ID

KV

Grid Zone Designation 14R



CONTOUR INTERVAL 10 FEET  
NORTH AMERICAN VERTICAL DATUM OF 1988  
This map was produced to conform with the  
National Geospatial Program US Topo Product Standard, 2011.  
A metadata file associated with this product is draft version 0.6.19



1	2	3	1 Owens Creek NE
4		5	2 Schneeman Draw NW
6	7	8	3 Schneeman Draw NE
			4 Owens Creek SE
			5 Schneeman Draw SE
			6 Bachelor Hill
			7 Pikes Peak
			8 Mitchell Canyon NE

ADJOINING QUADRANGLES

ROAD CLASSIFICATION	
Expressway	Local Connector
Secondary Hwy	Local Road
Ramp	4WD
Interstate Route	US Route
	State Route

SCHNEEMAN DRAW SW, TX  
2016

