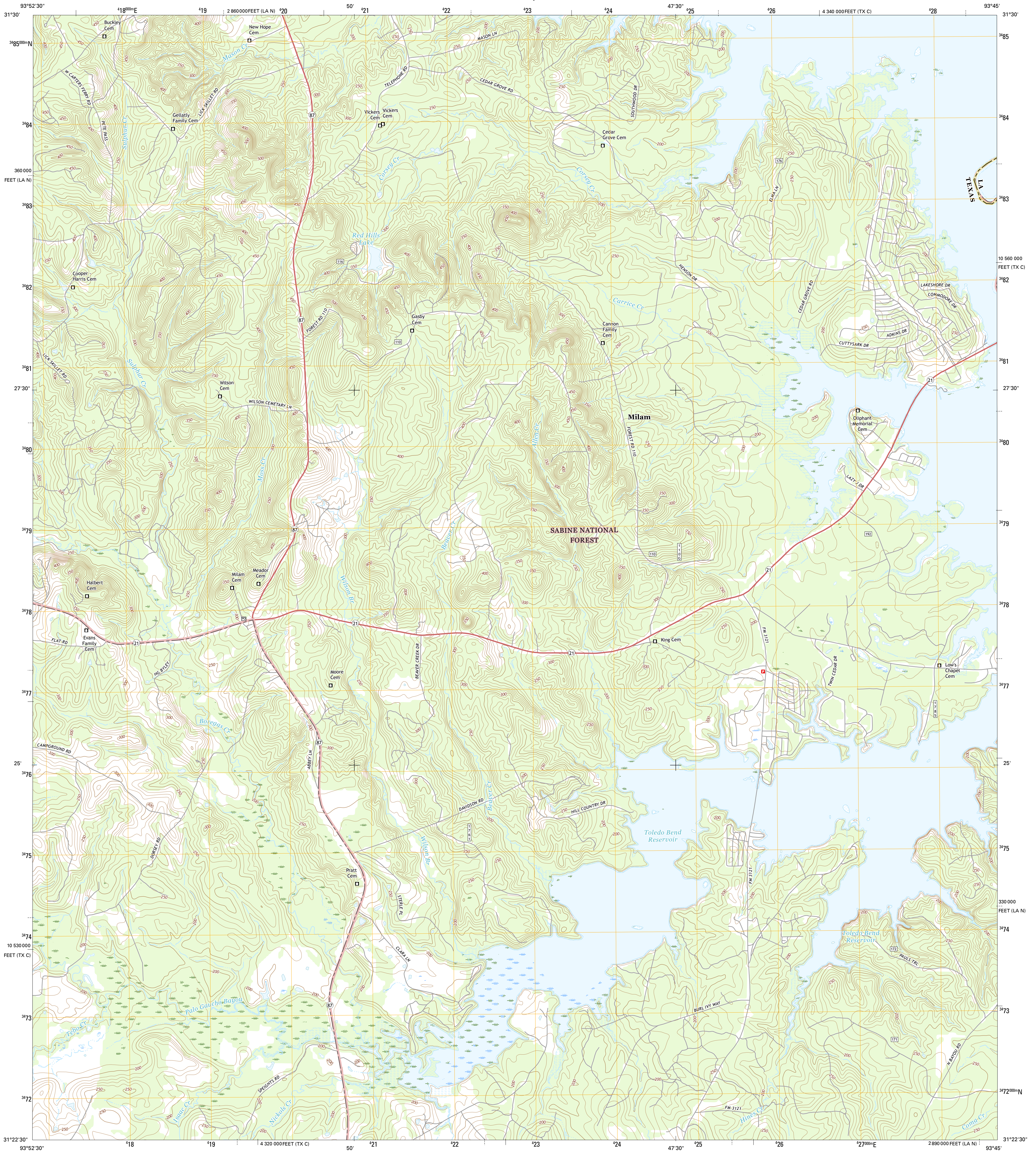




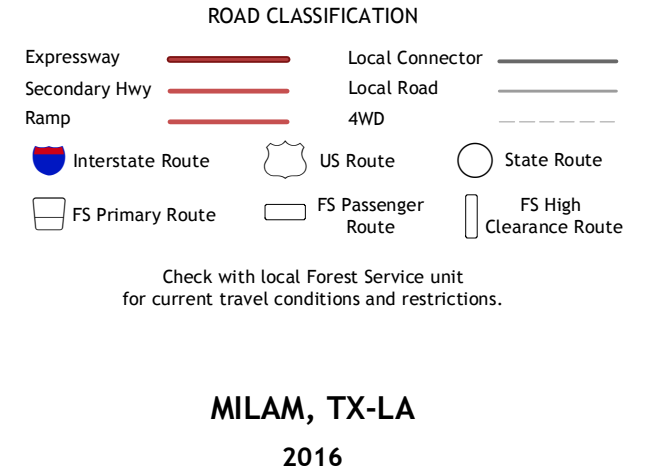
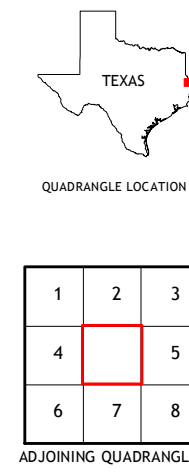
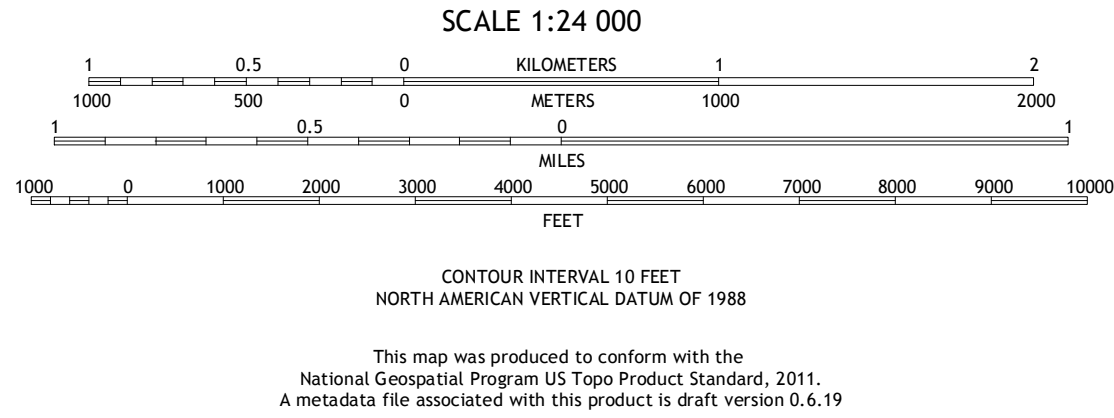
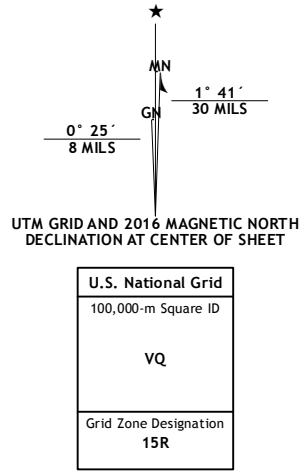
U.S. DEPARTMENT OF THE INTERIOR
U.S. GEOLOGICAL SURVEY



MILAM QUADRANGLE
TEXAS-LOUISIANA
7.5-MINUTE SERIES



Produced by the United States Geological Survey
North American Datum of 1983 (NAD83)
World Geodetic System of 1984 (WGS84). Projection and
1 000-meter grid: Universal Transverse Mercator, Zone 15R
10 000-foot ticks: Texas Coordinate System of 1983 (central
zone), Louisiana Coordinate System of 1983 (north zone)
This map is not a legal document. Boundaries may be
generalized for this map scale. Private lands within government
reservations may not be shown. Obtain permission before
entering private lands.
Imagery.....NAIP, July 2013
Roads.....U.S. Census Bureau, 2014 -
Roads within US Forest Service Lands.....FS Topo
Data with limited Forest Service updates, 2012 -
Names.....GNS, 2015
Hydrography.....National Hydrography Dataset,
Contours.....National Elevation Dataset,
Boundaries.....Multiple sources: see metadata file 1972 -
Public Land Survey System.....BLM, 2015
Wetlands.....FWS National Wetlands Inventory 1977 - 2014



1	2	3
4	5	6
7	8	9

ADJOINING QUADRANGLES

1 Patroon South
2 East Hamilton
3 Beech Bayou
4 Geneva
5 Salter Creek
6 Pineland North
7 Hemphill
8 Negreet SW

MILAM, TX-LA
2016

