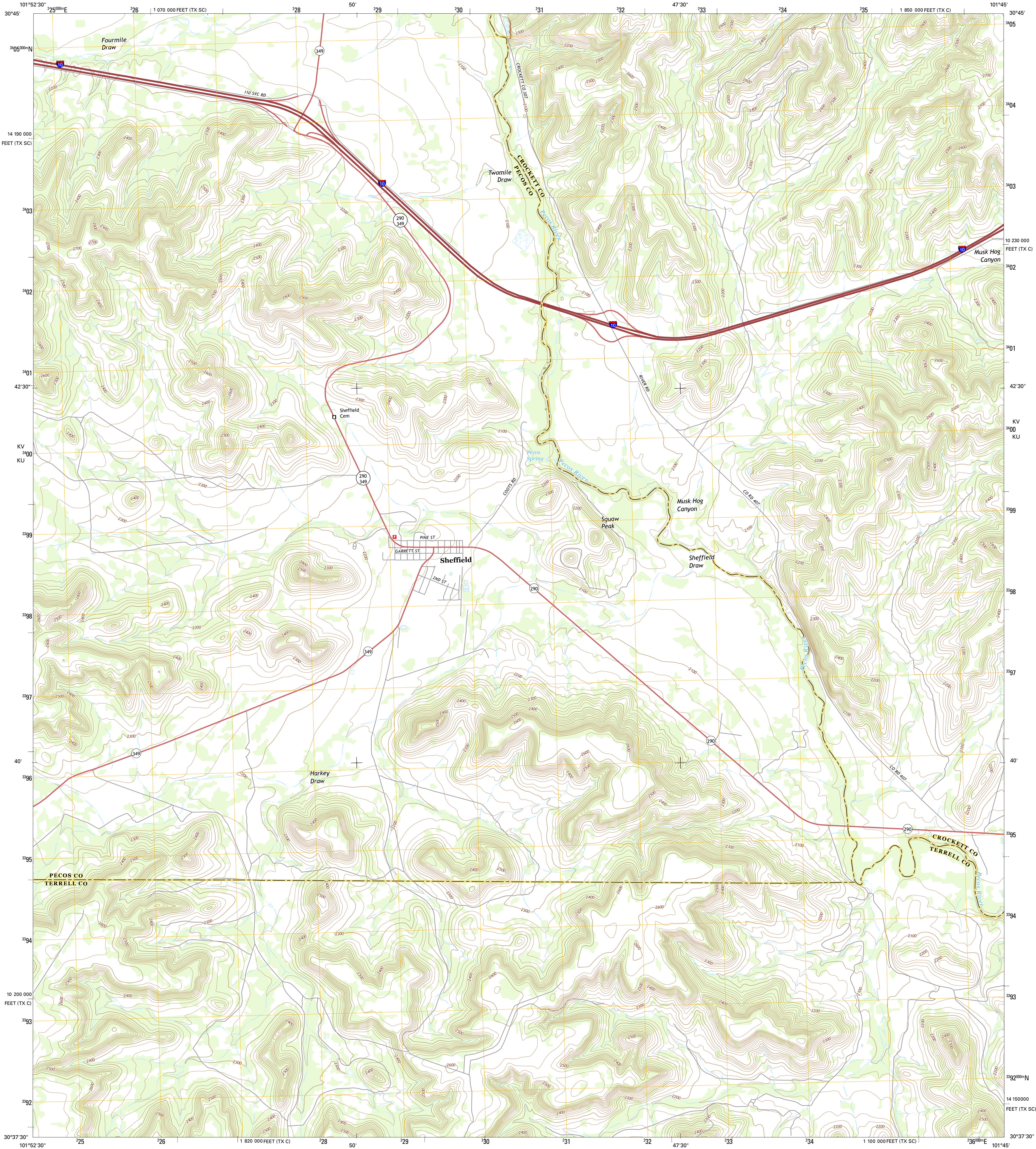




U.S. DEPARTMENT OF THE INTERIOR
U.S. GEOLOGICAL SURVEY



SHEFFIELD QUADRANGLE
TEXAS
7.5-MINUTE SERIES

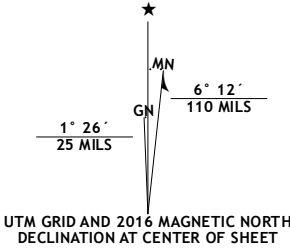


Produced by the United States Geological Survey
North American Datum of 1983 (NAD83)
World Geodetic System of 1984 (WGS84), Projection and
1 000-meter grid: Universal Transverse Mercator, Zone 14R
10 000-foot ticks: Texas Coordinate System of 1983 (central and
south central zones)

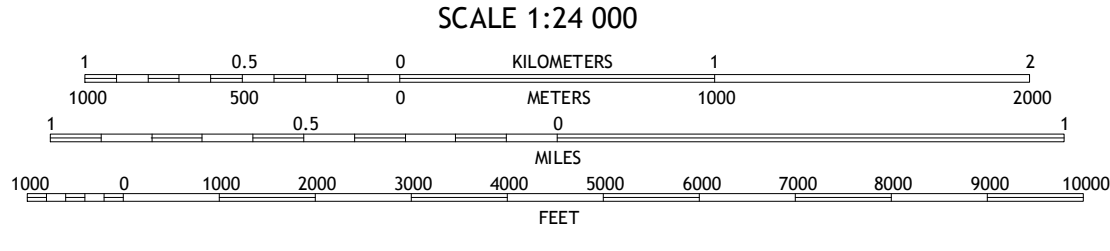
This map is not a legal document. Boundaries may be
generalized for this map scale. Private lands within government
reservations may not be shown. Obtain permission before
entering private lands.

Imagery.....NAIP, August 2014
Roads.....U.S. Census Bureau, 2014 - 2015
Names.....GNIS, 2015
Hydrography.....National Hydrography Dataset, 2014
Contours.....National Elevation Dataset, 2006
Boundaries.....Multiple sources; see metadata file 1972 - 2015

Wetlands.....FWS National Wetlands Inventory 1977 - 2014



| U.S. National Grid |
|-----------------------|
| 100,000-m Square ID |
| KV 700 |
| KU 700 |
| Grid Zone Designation |
| 14R |



CONTOUR INTERVAL 20 FEET
NORTH AMERICAN VERTICAL DATUM OF 1988
This map was produced to conform with the
National Geospatial Program US Topo Product Standard, 2011.
A metadata file associated with this product is draft version 0.6.19



| | | |
|---|---|---|
| 1 | 2 | 3 |
| 4 | 5 | 6 |
| 7 | 8 | 9 |

1 Divide Country
2 Deer Canyon
3 Owens Creek SW
4 Sheffield NW
5 Fort Lancaster
6 Horsehead Canyon
7 Sheffield SE
8 Dead Man Canyon

| ROAD CLASSIFICATION | | |
|---------------------|-----------------|-------------|
| Expressway | Local Connector | US Route |
| Secondary Hwy | Local Road | State Route |
| Ramp | 4WD | |
| Interstate Route | | |

SHEFFIELD, TX
2016

