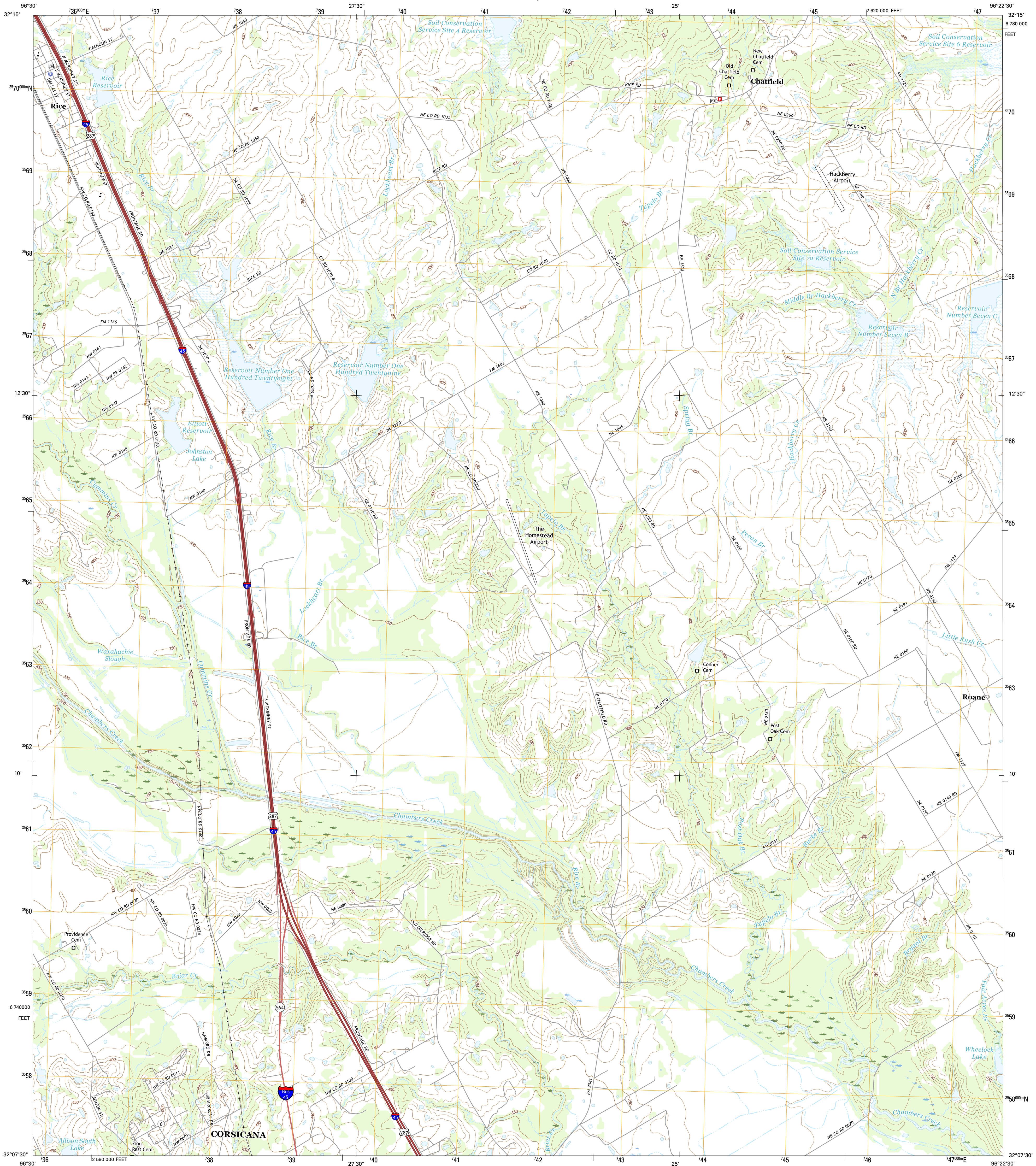




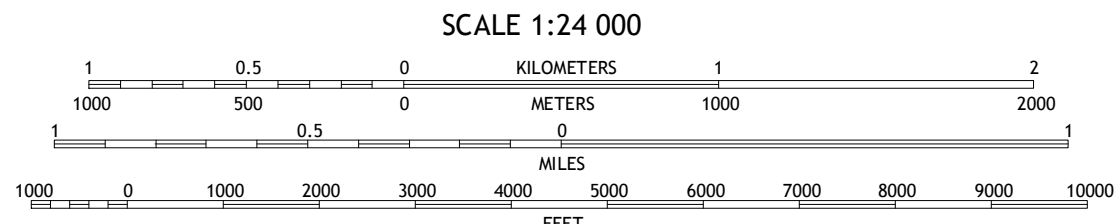
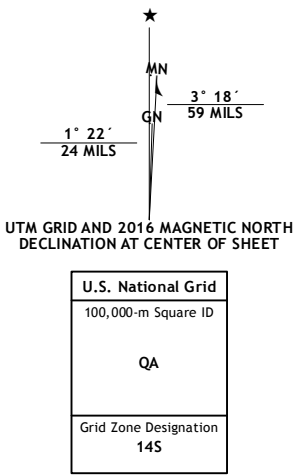
U.S. DEPARTMENT OF THE INTERIOR
U.S. GEOLOGICAL SURVEY



CHATFIELD QUADRANGLE
TEXAS-NAVARRO CO.
7.5-MINUTE SERIES



Produced by the United States Geological Survey
North American Datum of 1983 (NAD83)
World Geodetic System of 1984 (WGS84) - Projection and
1 000-meter grid: Universal Transverse Mercator, Zone 14S
10 000-foot ticks: Texas Coordinate System of 1983 (north
central zone)
This map is not a legal document. Boundaries may be
generalized for this map scale. Private lands within government
reservations may not be shown. Obtain permission before
entering private lands.
Image:.....NAIP, August 2014
Roads:.....U.S. Census Bureau, 2014 - 2015
Names:.....GNIS, 2015
Hydrography:.....National Hydrography Dataset, 2014
Contours:.....National Elevation Dataset, 2003
Boundaries:.....Multiple sources; see metadata file 1972 - 2015
Wetlands:.....FWS National Wetlands Inventory 1977 - 2014



CONTOUR INTERVAL 10 FEET
NORTH AMERICAN VERTICAL DATUM OF 1988
This map was produced to conform with the
National Geospatial Program US Topo Product Standard, 2011.
A metadata file associated with this product is draft version 0.6.19



1	2	3
4	5	6
7	8	9

ADJOINING QUADRANGLES

- 1 Ennis East
- 2 Rosser SW
- 3 Stryx
- 4 Emhouse
- 5 Bazette
- 6 Corbet
- 7 Corsicana
- 8 Powell

ROAD CLASSIFICATION
Expressway
Secondary Hwy
Ramp
Local Connector
Local Road
4WD
US Route
State Route

CHATFIELD, TX
2016

