



U.S. DEPARTMENT OF THE INTERIOR
U.S. GEOLOGICAL SURVEY

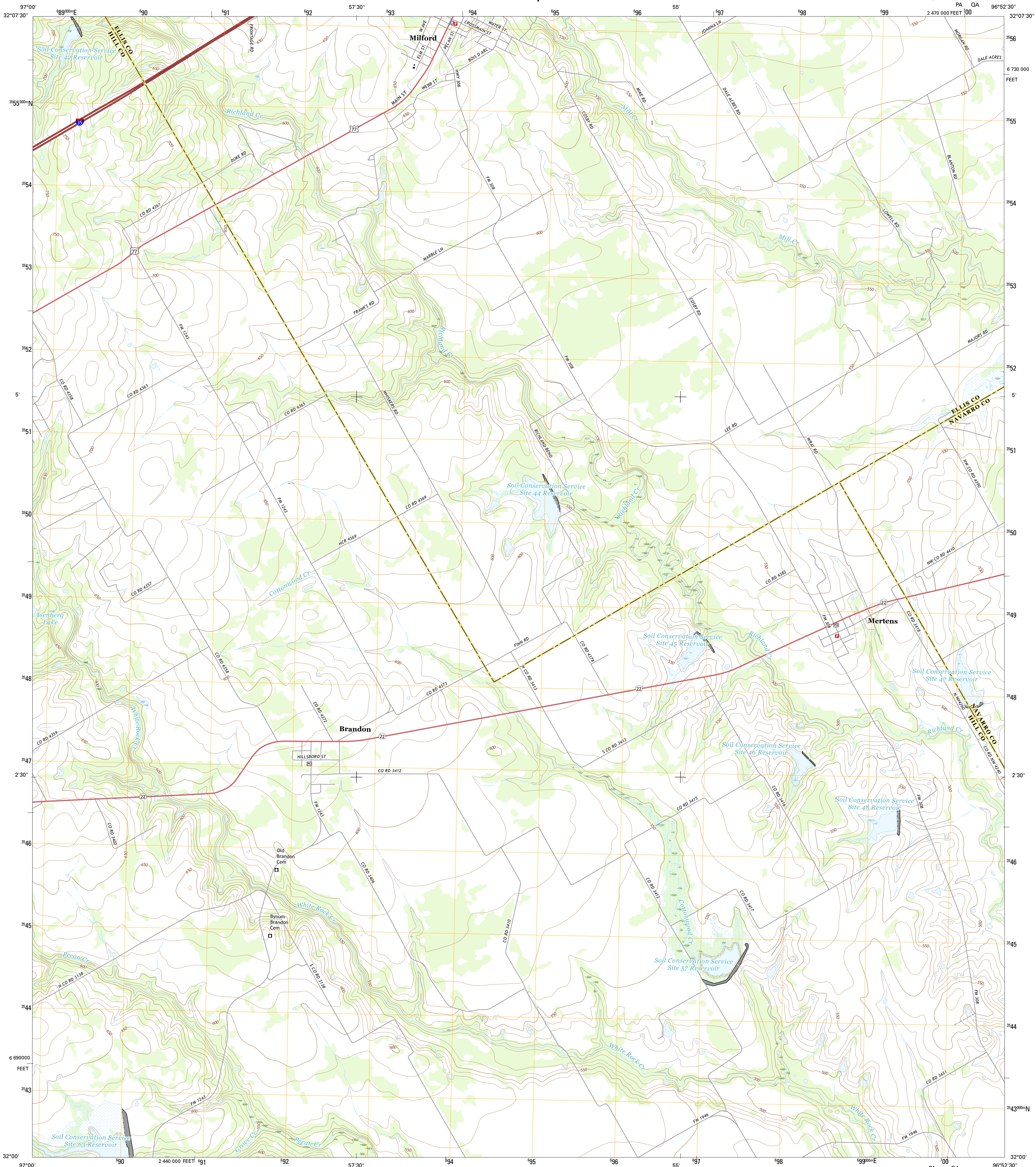


MERTENS QUADRANGLE
TEXAS

7.5-MINUTE SERIES
PA QA

96°52'30"

32°07'30"



Produced by the United States Geological Survey

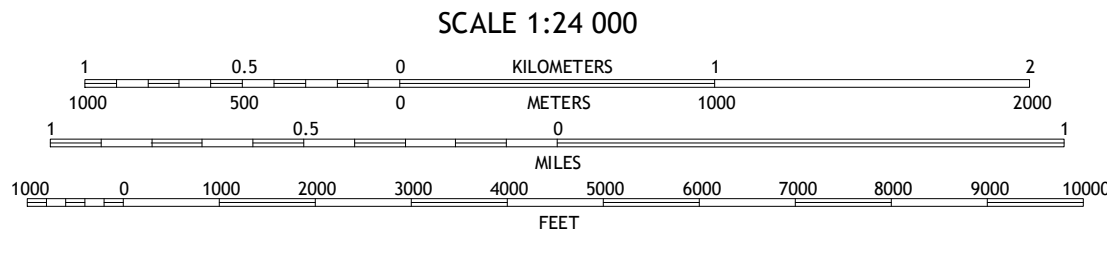
North American Datum of 1983 (NAD83)
World Geodetic System of 1984 (WGS84). Projection and
1 000-meter grid: Universal Transverse Mercator, Zone 14S
10 000-foot ticks: Texas Coordinate System of 1983 (north
central zone)

This map is not a legal document. Boundaries may be
generalized for this map scale. Private lands within government
reservations may not be shown. Obtain permission before
entering private lands.

Imagery.....NAIP, August 2014
Roads.....U.S. Census Bureau, 2014 - 2015
Names.....GNIS, 2015
Hydrography.....National Hydrography Dataset, 2014
Contours.....National Elevation Dataset, 2004
Boundaries.....Multiple sources; see metadata file 1972 - 2015
Wetlands.....FWS National Wetlands Inventory 1977 - 2014

UTM GRID AND 2016 MAGNETIC NORTH
DECLINATION AT CENTER OF SHEET

U.S. National Grid
100,000-m Square ID
700
PA QA
Grid Zone Designation
14S



CONTOUR INTERVAL 10 FEET
NORTH AMERICAN VERTICAL DATUM OF 1988

This map was produced to conform with the
National Geospatial Program US Topo Product Standard, 2011.
A metadata file associated with this product is draft version 0.6.19



QUADRANGLE LOCATION

ROAD CLASSIFICATION	
Expressway	Local Connector
Secondary Hwy	Local Road
Ramp	4WD
Interstate Route	US Route
	State Route

1	2	3
4	5	6
7	8	9

ADJOINING QUADRANGLES

1 Files Valley
2 Italy
3 Avalon
4 Hillsboro East
5 Frost
6 Abbott
7 Malone
8 Irene

MERTENS, TX
2016



NSN 7 6 4 3 0 1 6 3 9 1 2 5 1
NGA REF NO. USGSX24K28892