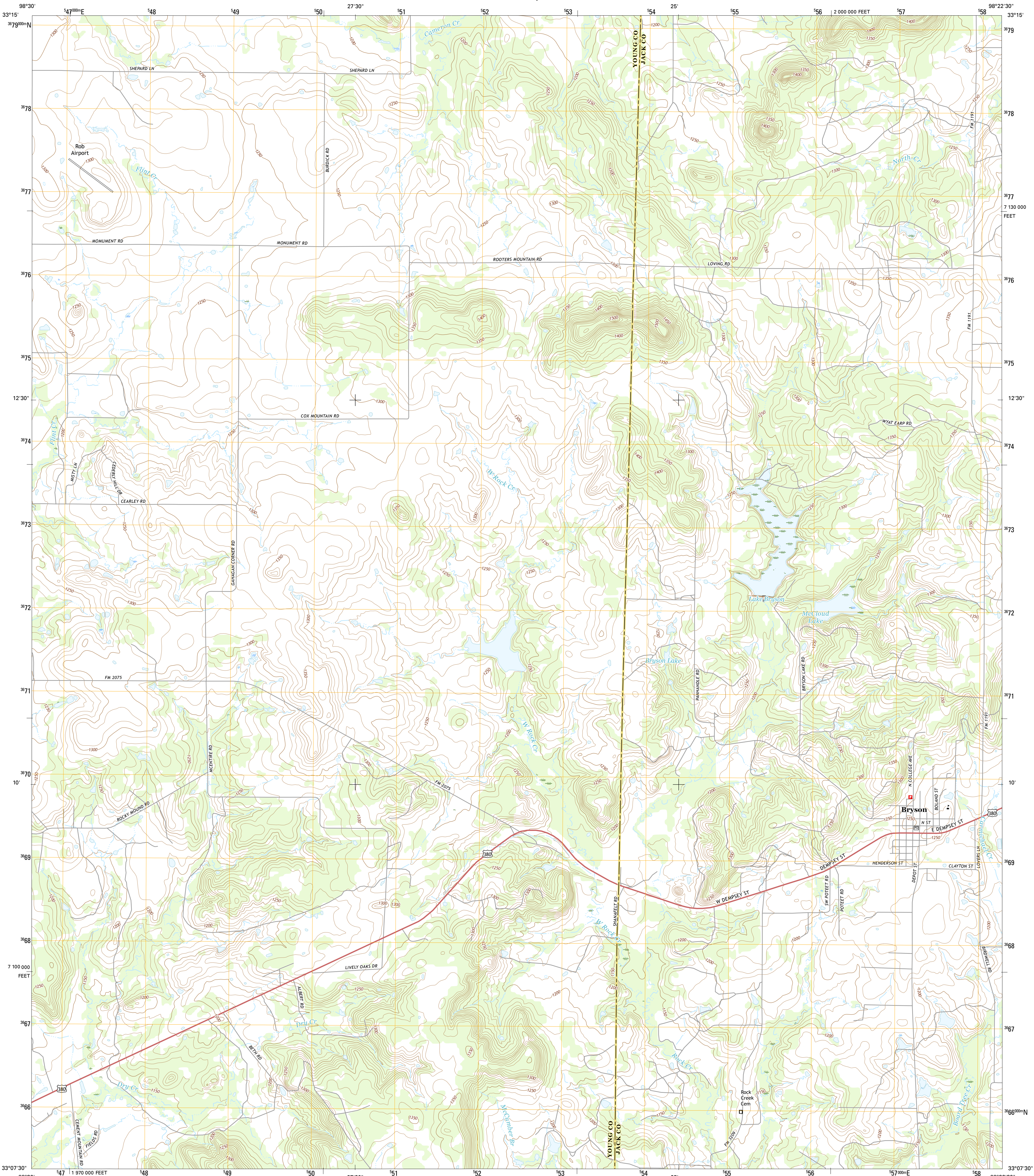




U.S. DEPARTMENT OF THE INTERIOR  
U.S. GEOLOGICAL SURVEY



BRYSON QUADRANGLE  
TEXAS  
7.5-MINUTE SERIES



Produced by the United States Geological Survey

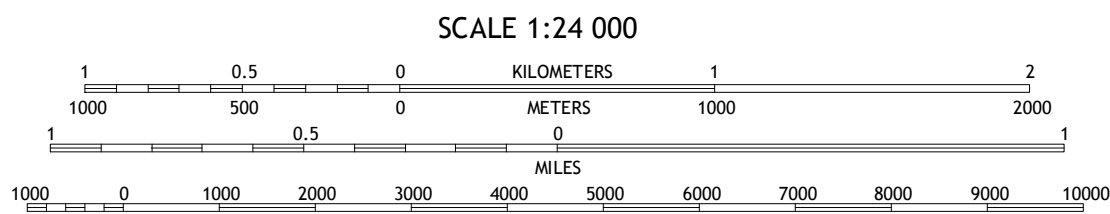
North American Datum of 1983 (NAD83)  
World Geodetic System of 1984 (WGS84). Projection and  
1000-meter grid: Universal Transverse Mercator, Zone 14S  
10 000-foot ticks: Texas Coordinate System of 1983 (north  
central zone)

This map is not a legal document. Boundaries may be  
generalized for this map scale. Private lands within government  
reservations may not be shown. Obtain permission before  
entering private lands.

Imagery.....NAIP, July 2014  
Roads.....U.S. Census Bureau, 2014 - 2015  
Names.....GNIS, 2015  
Hydrography.....National Hydrography Dataset, 2014  
Contours.....National Elevation Dataset, 2009  
Boundaries.....Multiple sources; see metadata file 1972 - 2015  
Wetlands.....FWS National Wetlands Inventory 1977 - 2014

UTM GRID AND 2016 MAGNETIC NORTH  
DECLINATION AT CENTER OF SHEET

|                       |
|-----------------------|
| U.S. National Grid    |
| 100,000-m Square ID   |
| NB                    |
| Grid Zone Designation |
| 14S                   |



CONTOUR INTERVAL 10 FEET  
NORTH AMERICAN VERTICAL DATUM OF 1988  
This map was produced to conform with the  
National Geospatial Program US Topo Product Standard, 2011.  
A metadata file associated with this product is draft version 0.6.19



QUADRANGLE LOCATION

|   |   |   |
|---|---|---|
| 1 | 2 | 3 |
| 4 | 5 | 6 |
| 7 | 8 | 9 |

1 Loving  
2 Markley  
3 Lynn Creek  
4 Lake Eddie  
5 Senate  
6 Graham  
7 Ross Mountain  
8 Long Hollow

ROAD CLASSIFICATION

|                  |                 |
|------------------|-----------------|
| Expressway       | Local Connector |
| Secondary Hwy    | Local Road      |
| Ramp             | 4WD             |
| Interstate Route | US Route        |
|                  | State Route     |

BRYSON, TX  
2016

