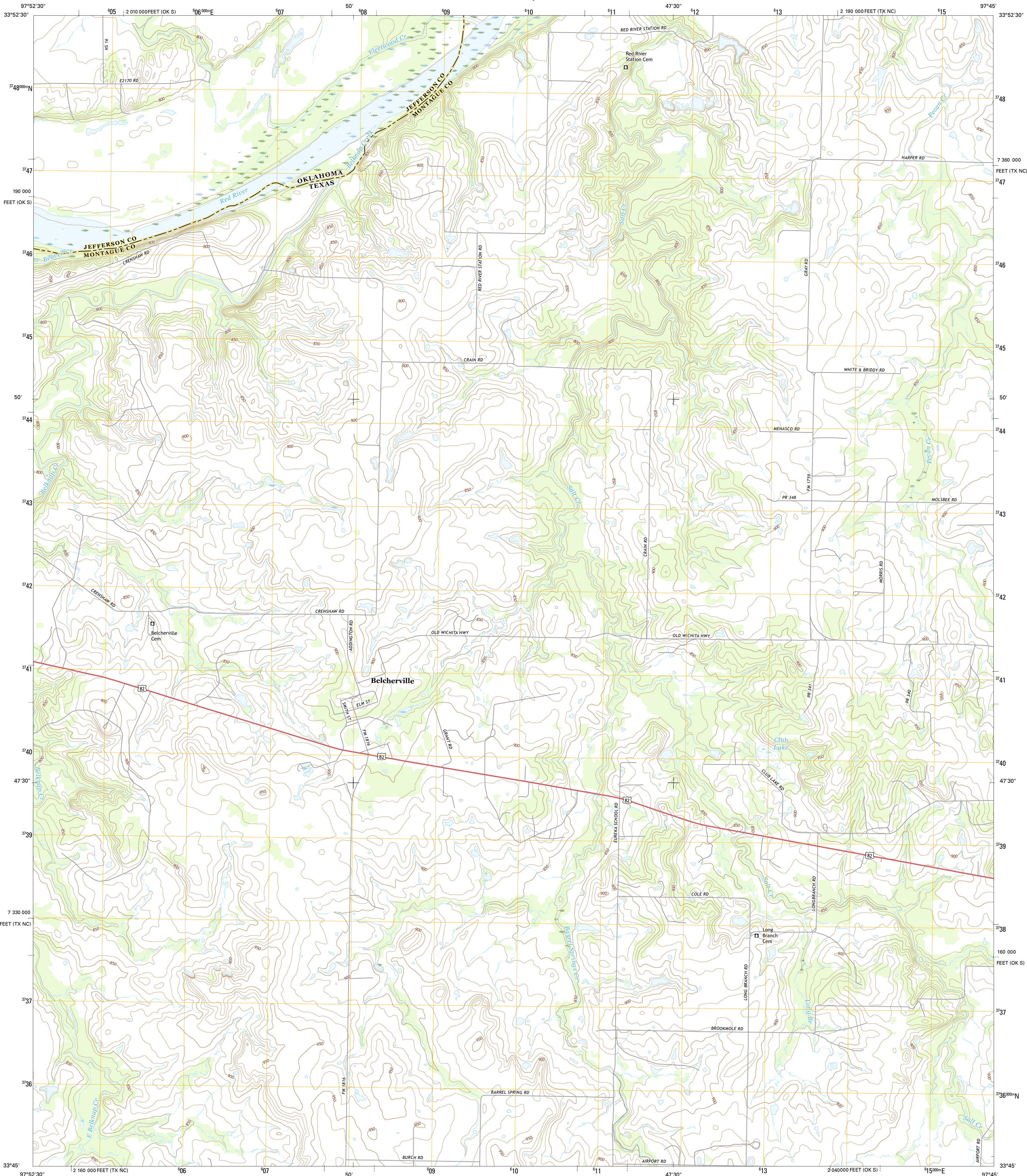




U.S. DEPARTMENT OF THE INTERIOR  
U.S. GEOLOGICAL SURVEY



BELCHERVILLE QUADRANGLE  
TEXAS-OKLAHOMA  
7.5-MINUTE SERIES



**Produced by the United States Geological Survey**  
North American Datum of 1983 (NAD83)  
World Geodetic System of 1984 (WGS84), Projection and  
1 000-meter grid; Universal Transverse Mercator, Zone 14S  
10 000-foot ticks; Texas Coordinate System of 1983 (north  
central zone), Oklahoma Coordinate System of 1983 (south  
zone)  
  
This map is not a legal document. Boundaries may be  
generalized for this map scale. Private lands within government  
reservations may not be shown. Obtain permission before  
imagery..... U.S. Census Bureau, 2014  
Roads..... U.S. Census Bureau, 2014  
Names..... GNIS, 2015  
Hydrography..... National Hydrography Dataset, 2013  
Contours..... National Elevation Dataset, 2004  
Boundaries..... Multiple sources; see metadata file 1972-2015  
  
Wetlands..... FWS National Wetlands Inventory 1977-2014

UTM GRID AND 2016 MAGNETIC NORTH  
DECLINATION AT CENTER OF SHEET  
  
U.S. National Grid  
100,000-m Square ID  
PC  
Grid Zone Designation  
14S



CONTOUR INTERVAL 10 FEET  
NORTH AMERICAN VERTICAL DATUM OF 1988  
  
This map was produced to conform with the  
National Geospatial Program US Topo Product Standard, 2011.  
A metadata file associated with this product is draft version 0.6.19



**ROAD CLASSIFICATION**  
Expressway  
Secondary Hwy  
Ramp  
Local Connector  
Local Road  
4WD  
US Route  
State Route

1	2	3
4	5	6
7	8	9

ADJOINING QUADRANGLES

1 Terral  
2 Fleetwood  
3 Prairie Valley School  
4 Ringold  
5 Nocona  
6 Stoneburg  
7 Buzzard Roost Knob  
8 Montague

**BELCHERVILLE, TX-OK**  
2016

