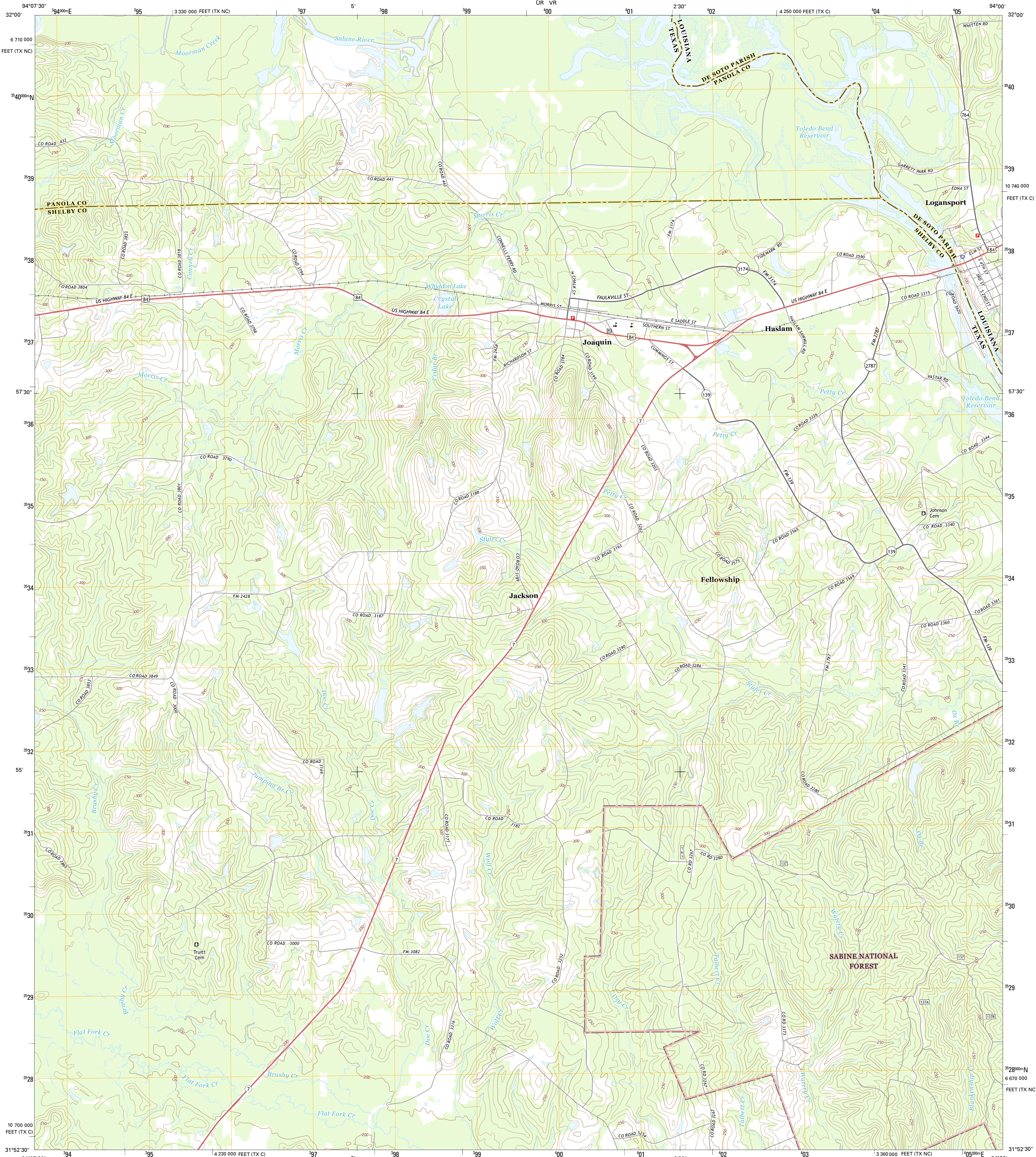




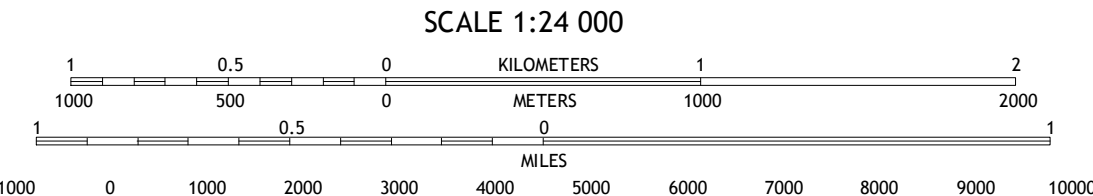
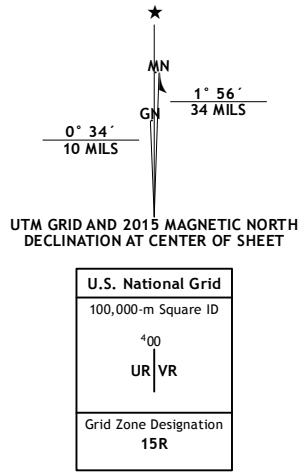
U.S. DEPARTMENT OF THE INTERIOR  
U.S. GEOLOGICAL SURVEY



LOGANSPORT WEST QUADRANGLE  
LOUISIANA-TEXAS  
7.5-MINUTE SERIES



**Produced by the United States Geological Survey**  
North American Datum of 1983 (NAD83)  
World Geodetic System of 1984 (WGS84). Projection and  
1000-meter grid: Universal Transverse Mercator, Zone 15R  
10 000-foot ticks: Texas Coordinate System of 1983 (central and  
north central zones), Louisiana Coordinate System of 1983  
(north zone)  
This map is not a legal document. Boundaries may be  
generalized for this map scale. Private lands within government  
reservations may not be shown. Obtain permission before  
Imagery.....NAIP, July 2013  
Roads within US Forest Service Lands.....FS Topo Data  
with limited Forest Service updates, 2012-2015  
Names.....GNIS, 2015  
Hydrography.....National Hydrography Dataset, 2013  
Contours.....National Elevation Dataset, 2003  
Boundaries.....Multiple sources; see metadata file 1972-2015  
Public Land Survey System.....BLM, 2015



CONTOUR INTERVAL 10 FEET  
NORTH AMERICAN VERTICAL DATUM OF 1988  
This map was produced to conform with the  
National Geospatial Program US Topo Product Standard, 2011.  
A metadata file associated with this product is draft version 0.6.18



ROAD CLASSIFICATION	
Expressway	Local Connector
Secondary Hwy	Local Road
Ramp	4WD
Interstate Route	US Route
FS Primary Route	FS Passenger Route
	FS High Clearance Route

1	2	3
4	5	6
7	8	9

1 Old Center  
2 Galloway  
3 Longstreet  
4 Tenaha East  
5 Logansport East  
6 Center  
7 Shelbyville  
8 Huxley

LOGANSPORT WEST, LA-TX  
2015

