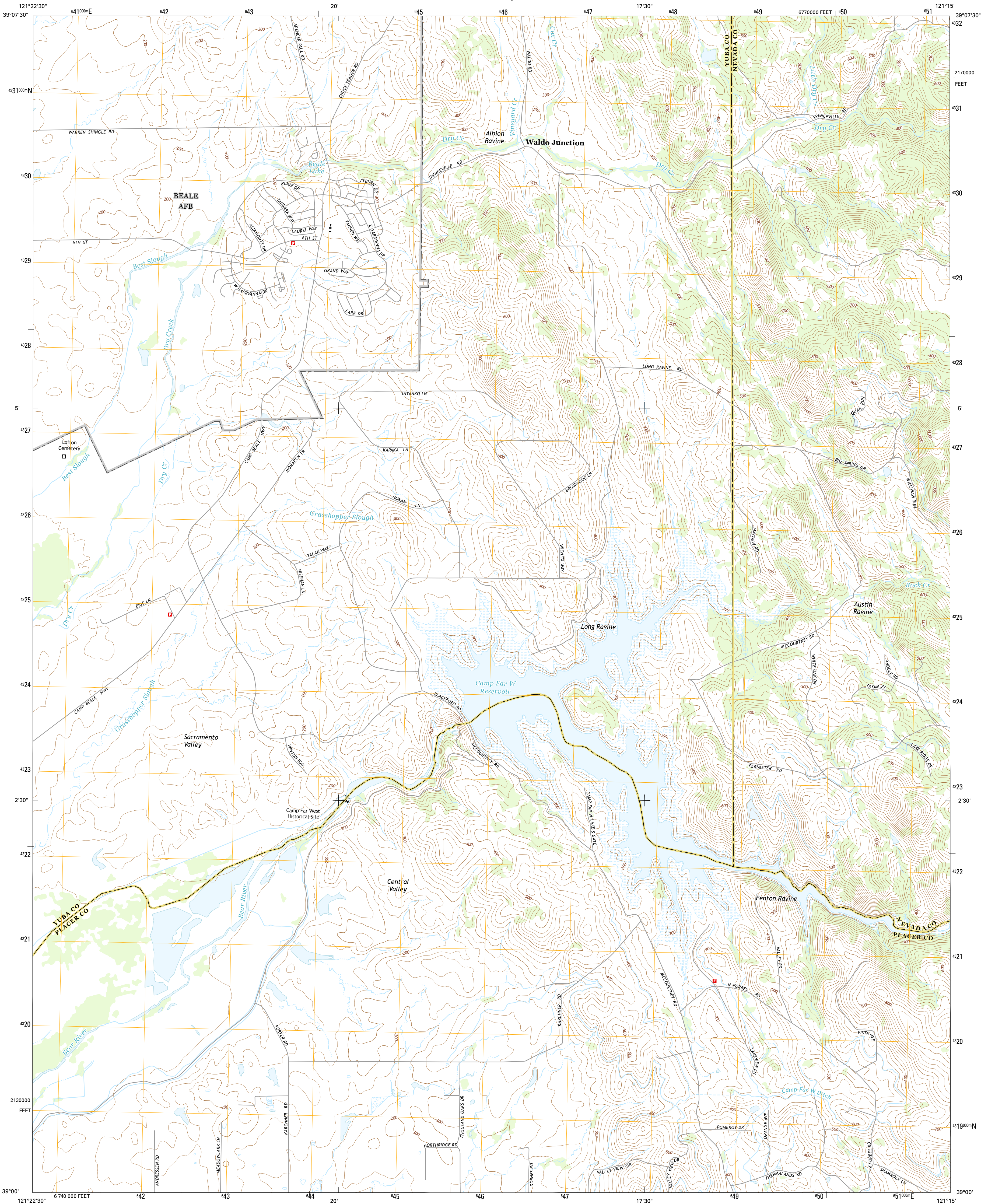




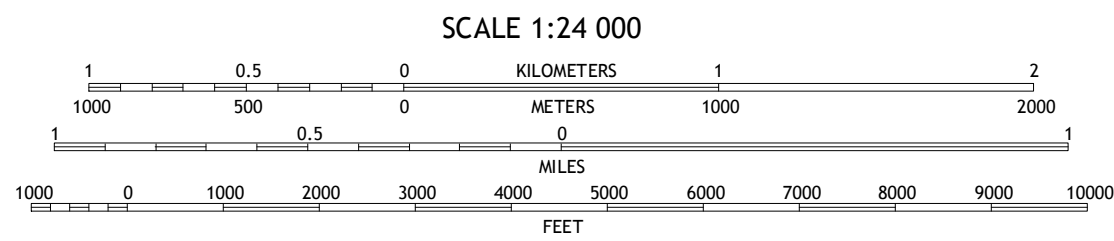
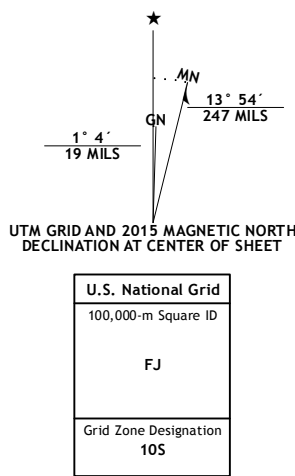
U.S. DEPARTMENT OF THE INTERIOR
U.S. GEOLOGICAL SURVEY



CAMP FAR WEST QUADRANGLE
CALIFORNIA
7.5-MINUTE SERIES



Produced by the United States Geological Survey
North American Datum of 1983 (NAD83)
World Geodetic System of 1984 (WGS84), Projection and
1 000-meter grid: Universal Transverse Mercator, Zone 10S
10 000-foot ticks: California Coordinate System of 1983 (zone 2)
This map is not a legal document. Boundaries may be
generalized for this map scale. Private lands within government
reservations may not be shown. Obtain permission before
entering private lands.
Imagery.....NAIP, July 2012
Roads.....HERE, ©2013 - 2014
Names.....GNIS, 2015
Hydrography.....National Hydrography Dataset, 2012
Contours.....National Elevation Dataset, 2003
Boundaries.....Multiple sources; see metadata file 1972 - 2015
Public Land Survey System.....BLM, 2011



CONTOUR INTERVAL 20 FEET
NORTH AMERICAN VERTICAL DATUM OF 1988
This map was produced to conform with the
National Geospatial Program US Topo Product Standard, 2011.
A metadata file associated with this product is draft version 0.6.18



1	2	3
4	5	6
7	8	9

ADJOINING QUADRANGLES

1 Browns Valley
2 Smartsville
3 Rough And Ready
4 Wheatland
5 Wolf
6 Sheridan
7 Lincoln
8 Gold Hill

ROAD CLASSIFICATION	
Expressway	Local Connector
Secondary Hwy	Local Road
Ramp	4WD
Interstate Route	US Route
	State Route

CAMP FAR WEST, CA
2015

