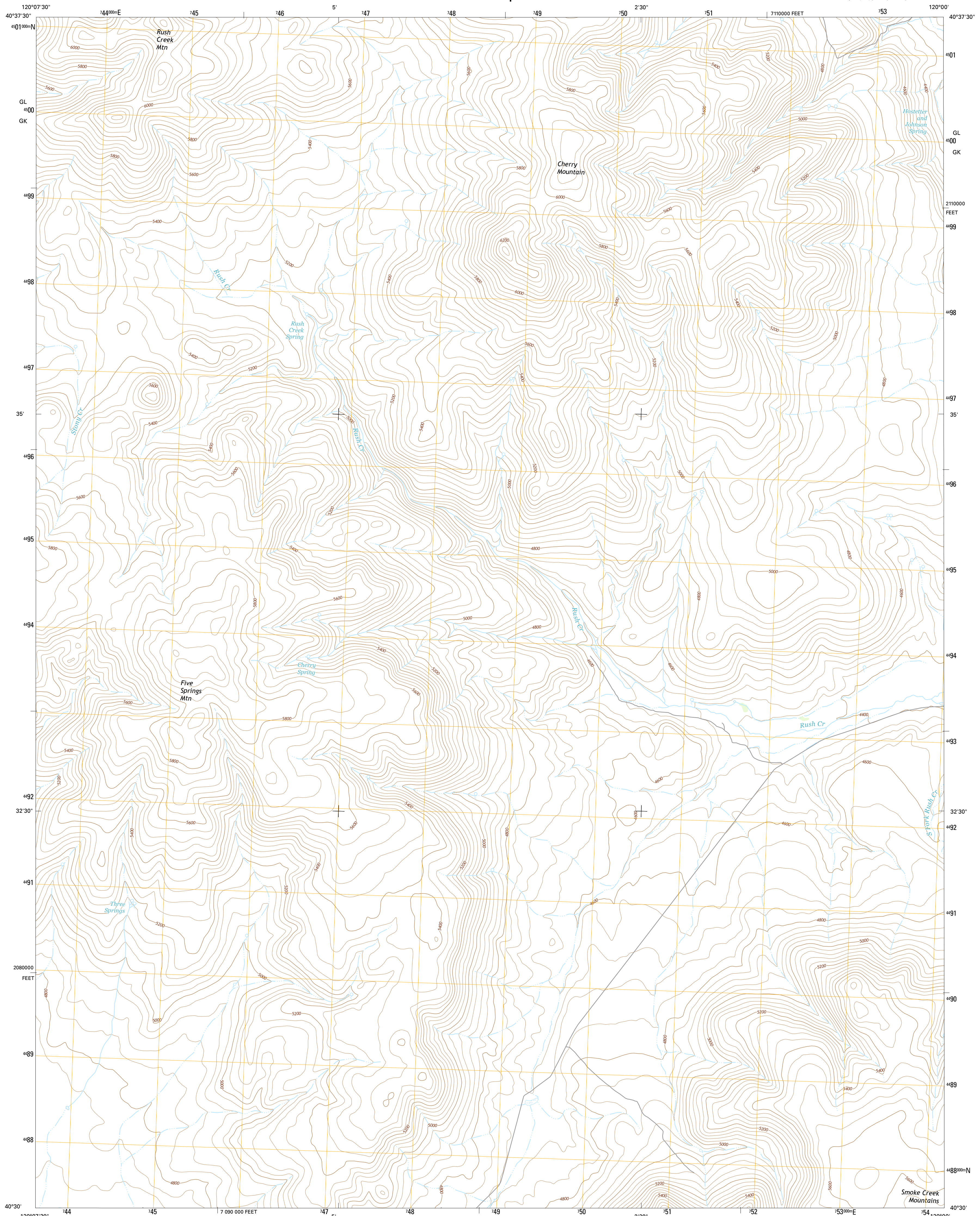




U.S. DEPARTMENT OF THE INTERIOR  
U.S. GEOLOGICAL SURVEY



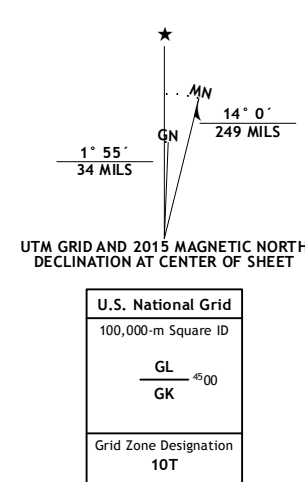
**CHERRY MOUNTAIN QUADRANGLE**  
CALIFORNIA-LASSEN CO.  
7.5-MINUTE SERIES



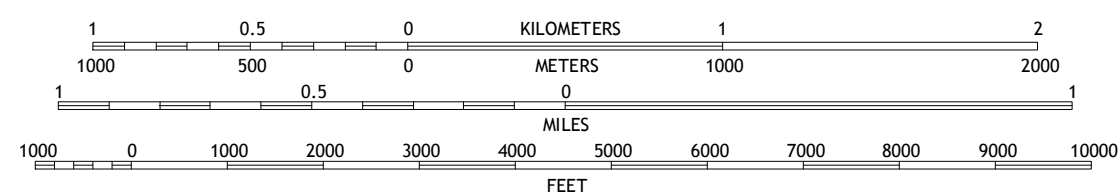
Produced by the United States Geological Survey  
North American Datum of 1983 (NAD83)  
World Geodetic System of 1984 (WGS84). Projection and  
1 000-meter grid: Universal Transverse Mercator, Zone 10T  
10 000-foot ticks: California Coordinate System of 1983 (zone 1)

This map is not a legal document. Boundaries may be generalized for this map scale. Private lands within government reservations may not be shown. Obtain permission before entering private lands.

Imagery.....	NAIP, June	2012
Roads.....	HERE, ©2013 -	2014
Names.....	GNIS,	2015
Hydrography.....	National Hydrography Dataset,	2012
Contours.....	National Elevation Dataset,	2000
Boundaries.....	Multiple sources; see metadata file	1972 - 2015
Public Land Survey System.....	BLM,	2011



SCALE 1:24 000



CONTOUR INTERVAL 40 FEET  
NORTH AMERICAN VERTICAL DATUM OF 1988

This map was produced to conform with the  
National Geospatial Program US Topo Product Standard, 2011.  
Data file associated with this product is draft version 0.6.18



QUADRANGLE LOCATION

1	2	3	1 Shinn Mountain
4		5	2 Al Shinn Canyon
6	7	8	3 Mixie Flat

AD JOINING QUADRANGLES

--	--	--

ADJOINING QUADRANGLES

ROAD CLASSIFICATION

Expressway  Local Connector   
 Secondary Hwy  Local Road   
 Ramp  4WD   
 Interstate Route  US Route  State Route

CHERRY MOUNTAIN, CA  
2015

