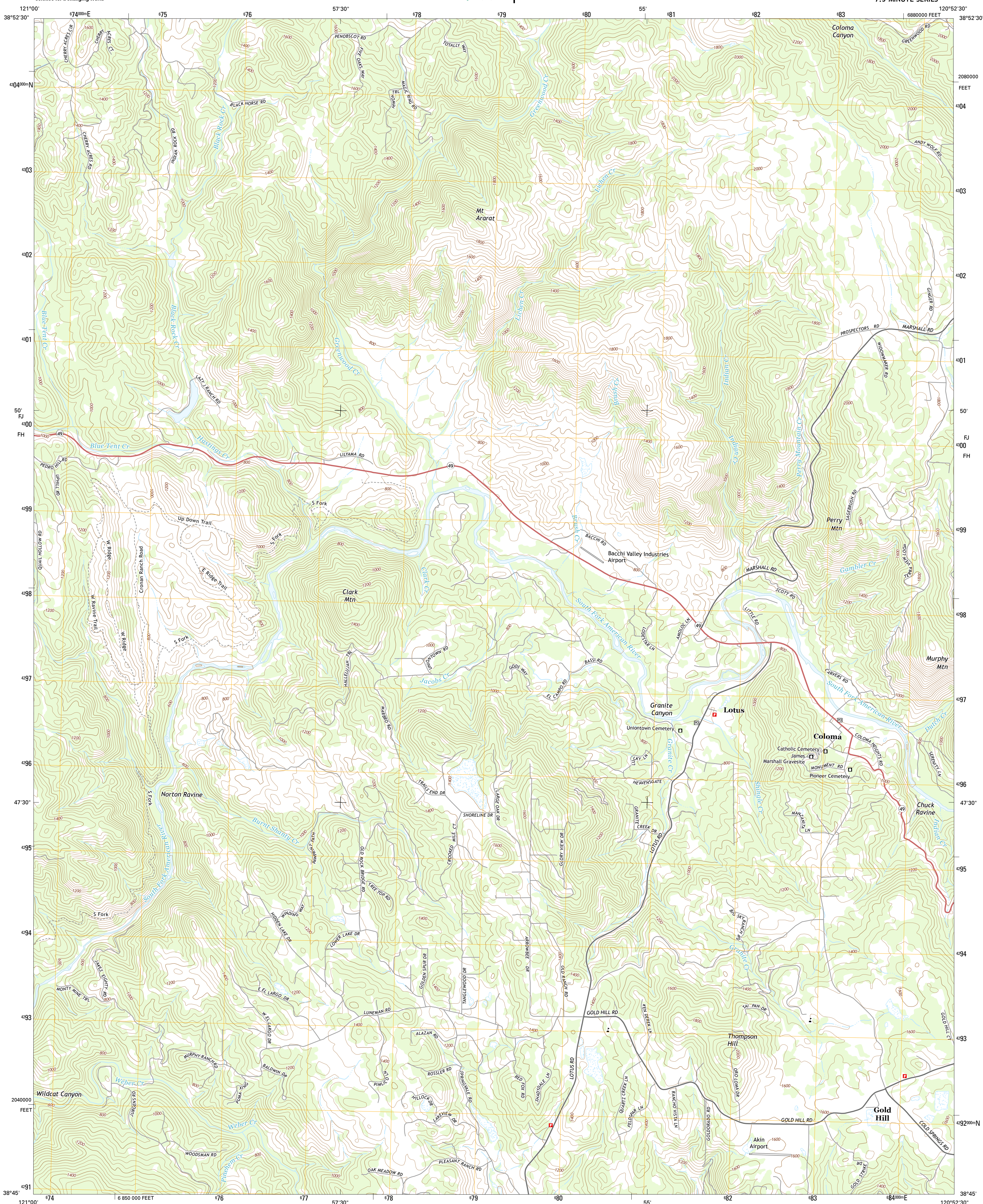




U.S. DEPARTMENT OF THE INTERIOR
U.S. GEOLOGICAL SURVEY



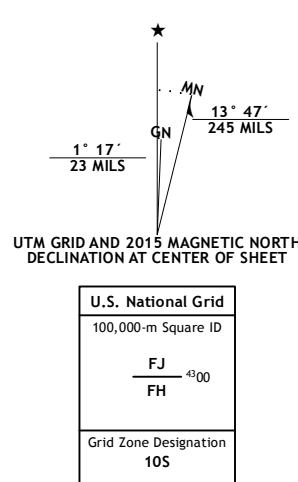
COLOMA QUADRANGLE
CALIFORNIA-EL DORADO CO.
7.5-MINUTE SERIES



Produced by the United States Geological Survey
North American Datum of 1983 (NAD83)
World Geodetic System of 1984 (WGS84). Projection and
1 000-meter grid: Universal Transverse Mercator, Zone 10S
10 000-foot ticks: California Coordinate System of 1983 (zone 2)

This map is not a legal document. Boundaries may be generalized for this map scale. Private lands within government reservations may not be shown. Obtain permission before entering private lands.

Imagery.....NAIP, July 2013
Roads.....HERE, ©2013 - 2014
Names.....GNIS, 2011
Hydrography.....National Hydrography Dataset, 2012
Contours.....National Elevation Dataset, 2011
Boundaries.....Multiple sources; see metadata file 1972
Public Land Survey System.....BLM, 2012



SCALE 1:24 000

CONTOUR INTERVAL 40 FEET
NORTH AMERICAN VERTICAL DATUM OF 1988

This map was produced to conform with the
Geospatial Program US Topo Product Standard, 2011.
A file associated with this product is draft version 0.6.18



1	2	3	1 Auburn
4		5	2 Greenwood
6	7	8	3 Georgetown

ADJOINING QUADRANGLES

4 Pilot Hill
5 Garden Valley
6 Clarksville
7 Shingle Springs
8 Placerville

ROAD CLASSIFICATION

Expressway		Local Connector	
Secondary Hwy		Local Road	
Ramp		4WD	

Interstate Route US Route State Route

COLOMA, CA
2015

