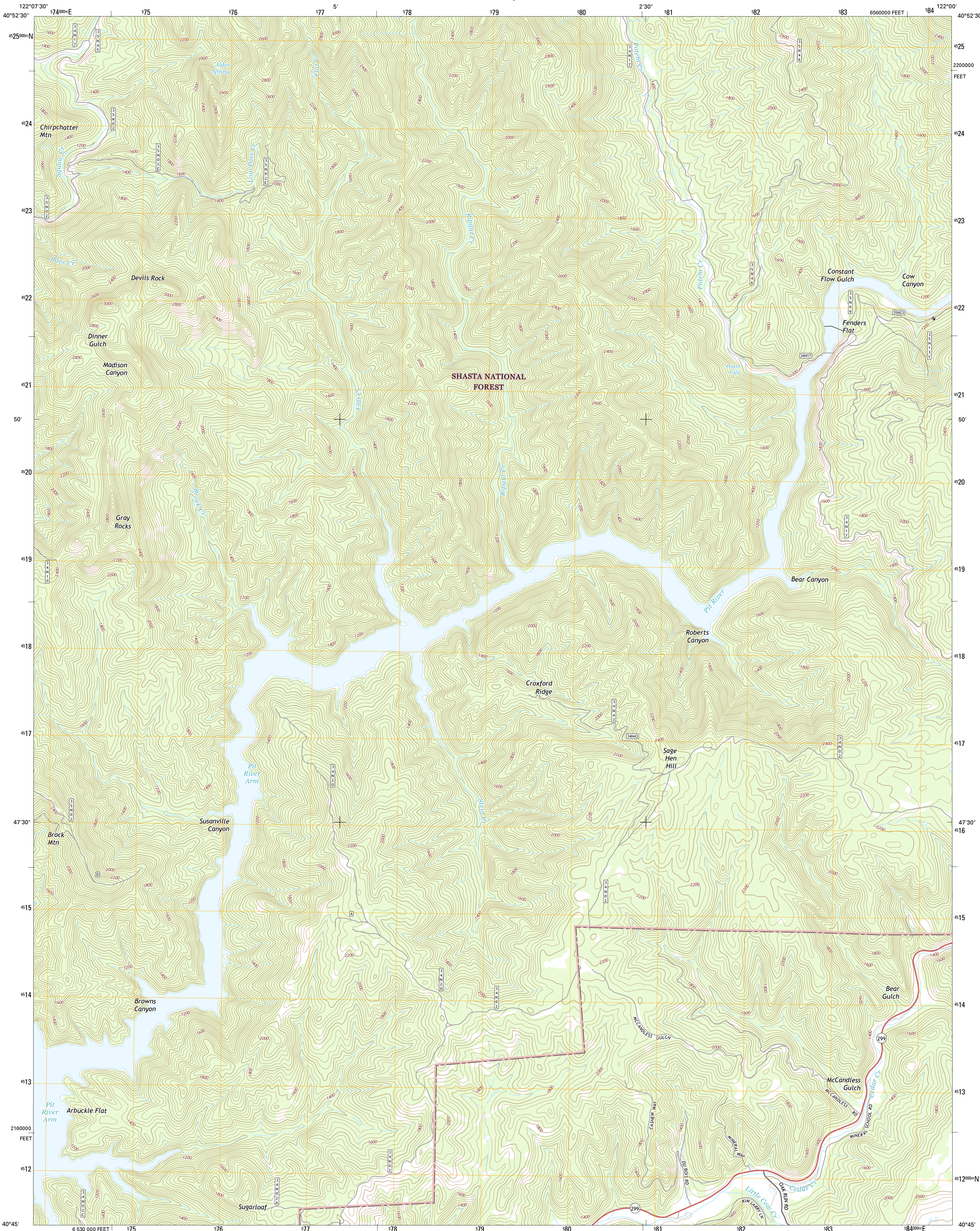




U.S. DEPARTMENT OF THE INTERIOR  
U.S. GEOLOGICAL SURVEY



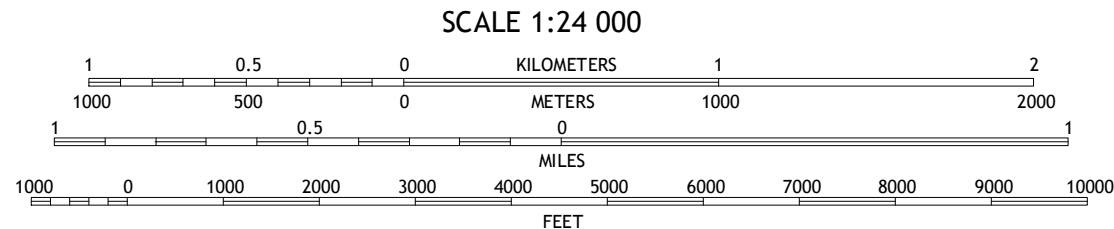
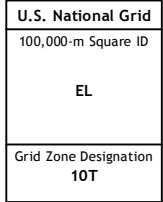
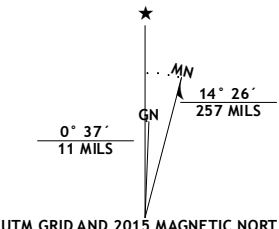
DEVILS ROCK QUADRANGLE  
CALIFORNIA-SHASTA CO.  
7.5-MINUTE SERIES



Produced by the United States Geological Survey  
North American Datum of 1983 (NAD83). Projection and  
World Geodetic System of 1984 (WGS84). Zone 10T  
10 000-foot ticks: California Coordinate System of 1983 (zone 1)

This map is not a legal document. Boundaries may be  
generalized for this map scale. Private lands within government  
reservations may not be shown. Obtain permission before  
entering private lands.

Imagery.....NAIP, July 2012  
Roads.....HERE, ©2013 - 2014  
Roads within US Forest Service Lands.....FSTopo Data  
with limited Forest Service updates, 2012 - 2015  
Names.....GNB, 2015  
Hydrography.....National Hydrography Dataset, 2012  
Contours.....National Elevation Dataset, 2001  
Boundaries.....Multiple sources; see metadata file 1972 - 2015  
Public Land Survey System.....BLM, 2011



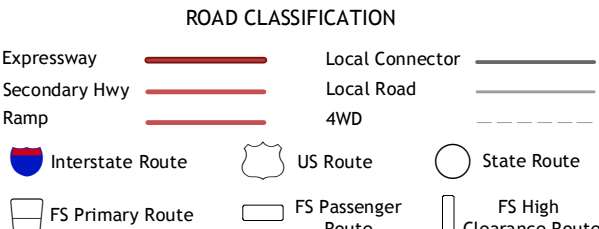
CONTOUR INTERVAL 40 FEET  
NORTH AMERICAN VERTICAL DATUM OF 1988  
This map was produced to conform with the  
National Geospatial Program US Topo Product Standard, 2011.  
A metadata file associated with this product is draft version 0.6.18



1	2	3
4	5	6
7	8	9

ADJOINING QUADRANGLES

1 Bollibokka Mountain  
2 Goose Gap  
3 Roaring Creek  
4 Minnesota Mountain  
5 Montgomery Creek  
6 Bella Vista  
7 Oak Run  
8 Whitmore



Check with local Forest Service unit  
for current travel conditions and restrictions.

DEVILS ROCK, CA  
2015

