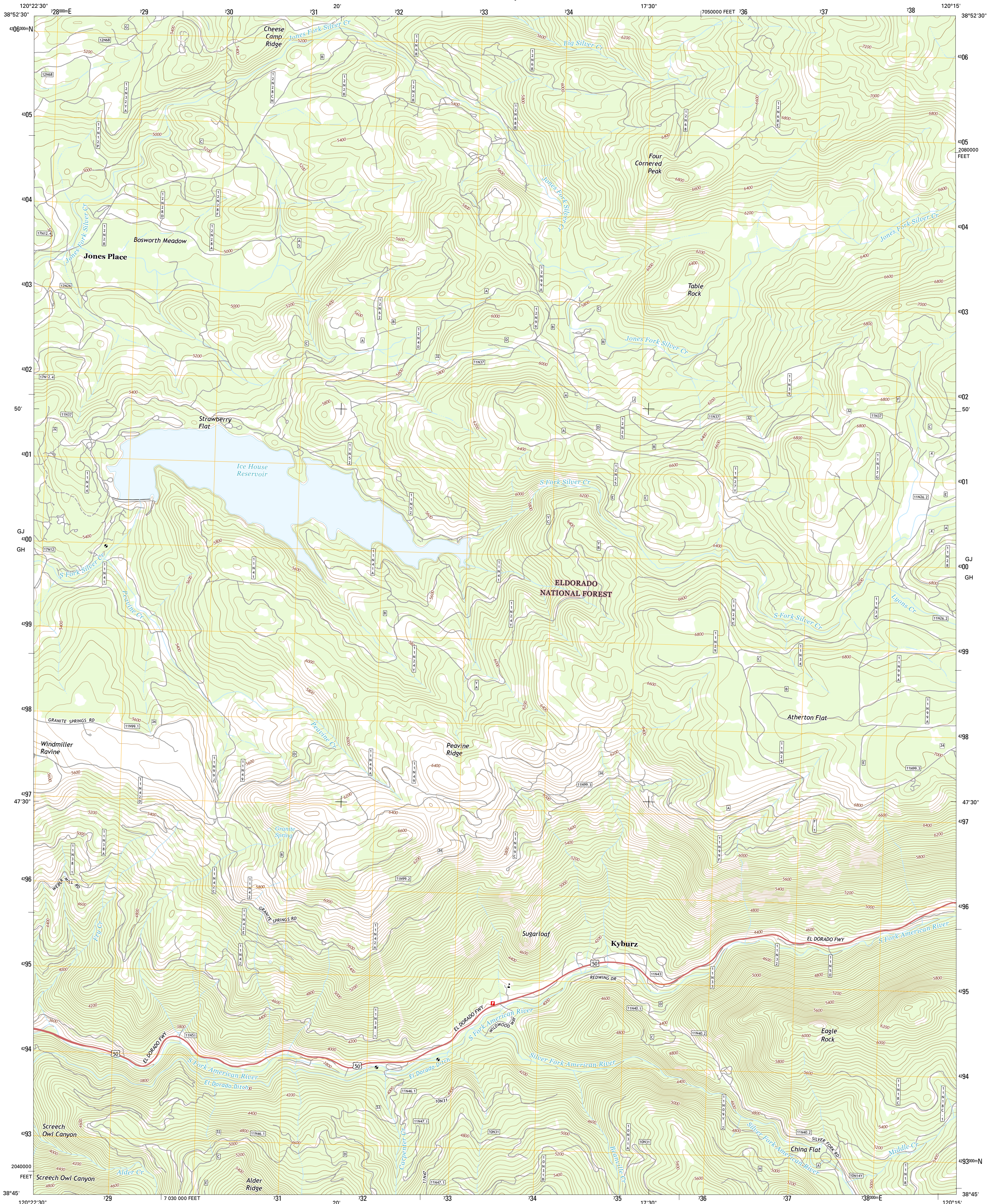




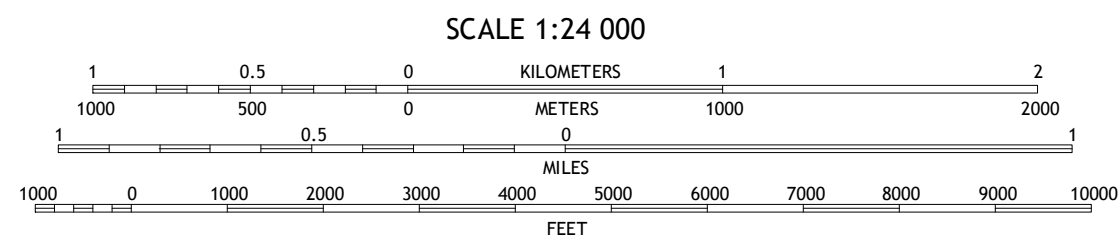
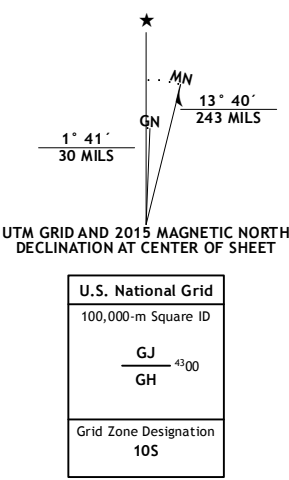
U.S. DEPARTMENT OF THE INTERIOR  
U.S. GEOLOGICAL SURVEY



KYBURZ QUADRANGLE  
CALIFORNIA-EL DORADO CO.  
7.5-MINUTE SERIES



**Produced by the United States Geological Survey**  
North American Datum of 1983 (NAD83)  
World Geodetic System of 1984 (WGS84). Projection and  
1000-meter grid: Universal Transverse Mercator, Zone 10S  
10 000-foot ticks: California Coordinate System of 1983 (zone 2)  
This map is not a legal document. Boundaries may be  
generalized for this map scale. Private lands within government  
reservations may not be shown. Obtain permission before  
entering private lands.  
Imagery.....NAIP, July 2012  
Roads.....HERE, ©2013 - 2014  
Roads within US Forest Service Lands.....FS Topo Data  
with limited Forest Service updates, 2012 - 2015  
Names.....GNIS, 2015  
Hydrography.....National Hydrography Dataset, 2012  
Contours.....National Elevation Dataset, 2000  
Boundaries.....see metadata file 1972 - 2015  
Public Land Survey System.....BLM, 2011



CONTOUR INTERVAL 40 FEET  
NORTH AMERICAN VERTICAL DATUM OF 1988

This map was produced to conform with the  
National Geospatial Program US Topo Product Standard, 2011.  
A metadata file associated with this product is draft version 0.6.18



QUADRANGLE LOCATION

| ROAD CLASSIFICATION |                    |                         |
|---------------------|--------------------|-------------------------|
| Expressway          | Local Connector    |                         |
| Secondary Hwy       | Local Road         |                         |
| Ramp                | 4WD                |                         |
| Interstate Route    | US Route           | State Route             |
| FS Primary Route    | FS Passenger Route | FS High Clearance Route |

Check with local Forest Service unit  
for current travel conditions and restrictions.

|   |   |   |
|---|---|---|
| 1 | 2 | 3 |
| 4 | 5 | 6 |
| 7 | 8 | 9 |

ADJOINING QUADRANGLES

- Robbs Peak
- Loon Lake
- Rockbound Valley
- Riverton
- Pyramid Peak
- Old Iron Mountain
- Leek Spring Hill
- Tragedy Spring

KYBURZ, CA  
2015

