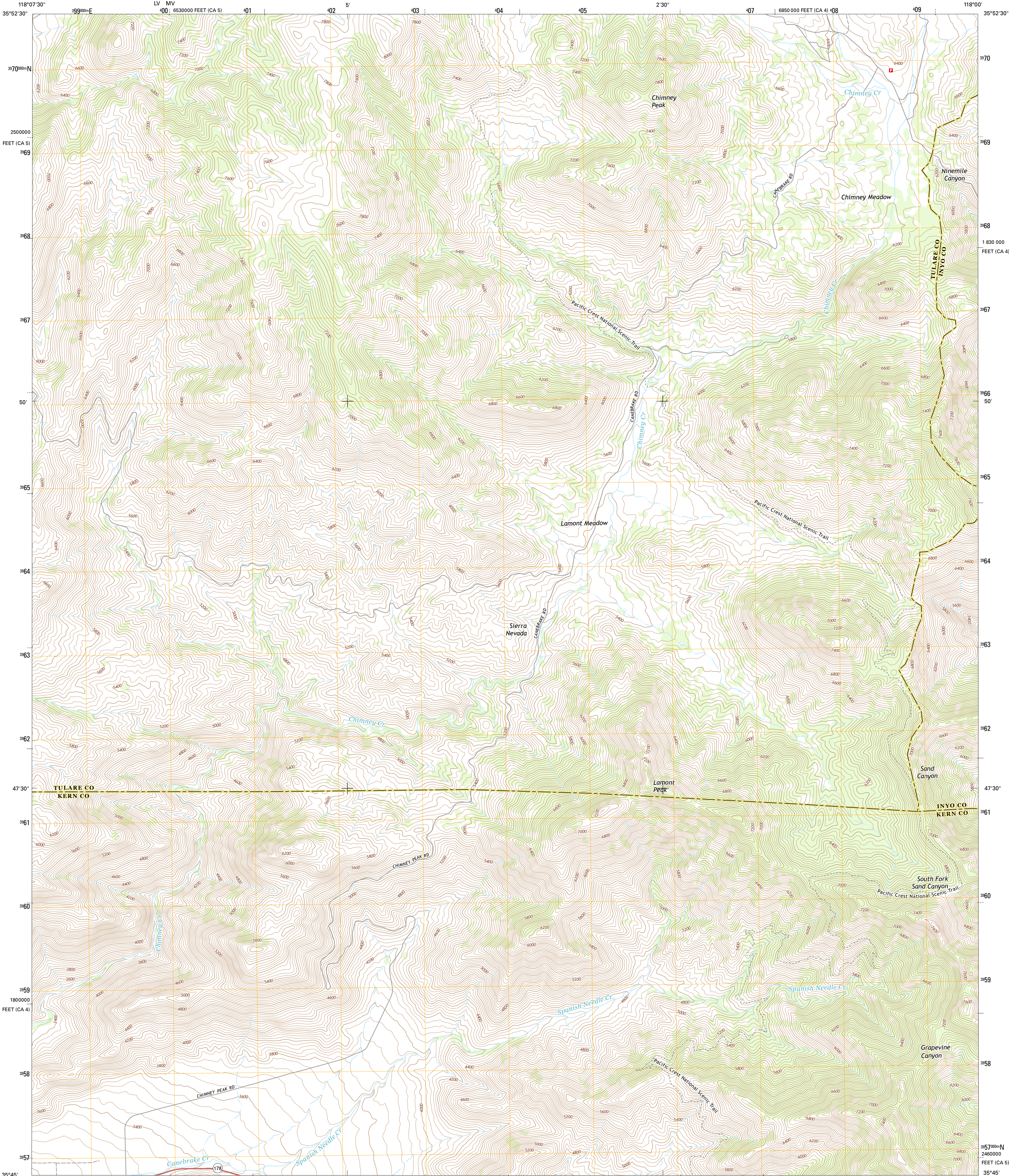




U.S. DEPARTMENT OF THE INTERIOR  
U.S. GEOLOGICAL SURVEY



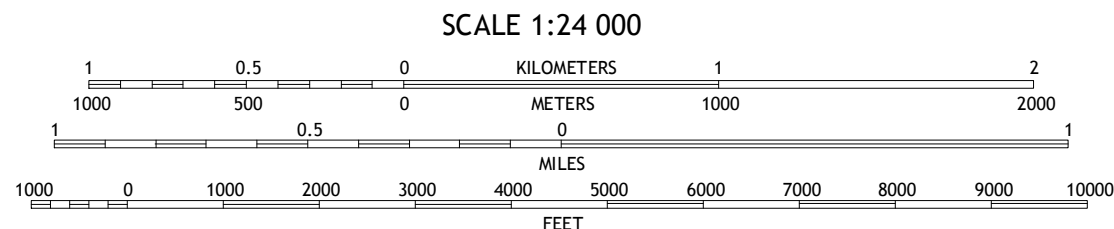
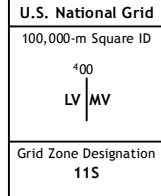
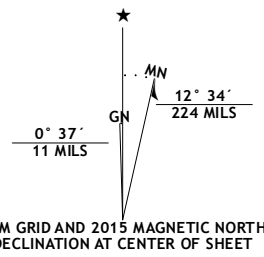
LAMONT PEAK QUADRANGLE  
CALIFORNIA  
7.5-MINUTE SERIES



Produced by the United States Geological Survey  
North American Datum of 1983 (NAD83)  
World Geodetic System of 1984 (WGS84). Projection and  
1000-meter grid: Universal Transverse Mercator, Zone 11S  
10 000-foot ticks: California Coordinate System of 1983 (zones 4  
and 5)

This map is not a legal document. Boundaries may be  
generalized for this map scale. Private lands within government  
reservations may not be shown. Obtain permission before  
entering private lands.

Imagery.....NAIP, June 2012 - July 2012  
Roads.....HERE, ©2013 - 2014  
Names.....GNIS, ©2015 - 2015  
Hydrography.....National Hydrography Dataset, 2012  
Contours.....National Elevation Dataset, 2001  
Boundaries.....Multiple sources; see metadata file 1972 - 2015  
Public Land Survey System.....BLM, 2011



CONTOUR INTERVAL 40 FEET  
NORTH AMERICAN VERTICAL DATUM OF 1988  
This map was produced to conform with the  
National Geospatial Program US Topo Product Standard, 2011.  
A metadata file associated with this product is draft version 0.6.18



QUADRANGLE LOCATION

ROAD CLASSIFICATION	
Expressway	Local Connector
Secondary Hwy	Local Road
Ramp	4WD
Interstate Route	US Route
	State Route

1	2	3
4	5	6
7	8	9

ADJOINING QUADRANGLES

1 Rockhouse Basin  
2 Sacatar Canyon  
3 Little Lake  
4 White Dome  
5 Ninemile Canyon  
6 Onyx  
7 Walker Pass  
8 Owens Peak

LAMONT PEAK, CA  
2015

