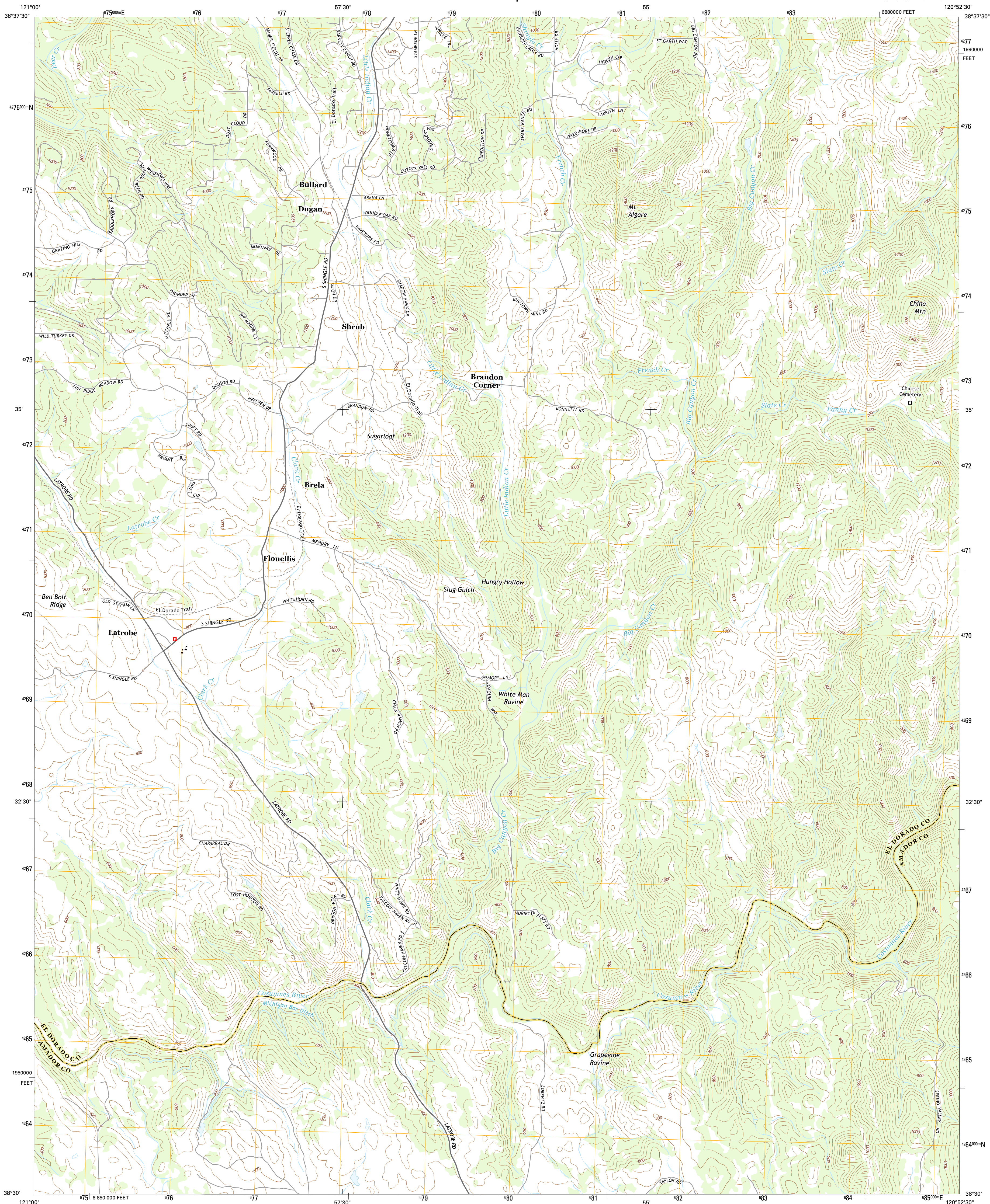




U.S. DEPARTMENT OF THE INTERIOR
U.S. GEOLOGICAL SURVEY



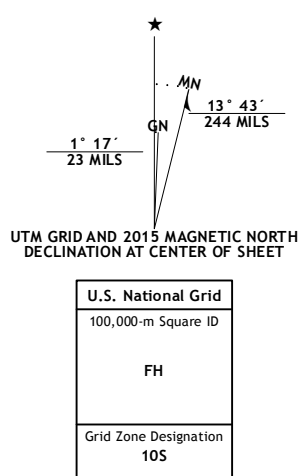
LATROBE QUADRANGLE
CALIFORNIA
7.5-MINUTE SERIES



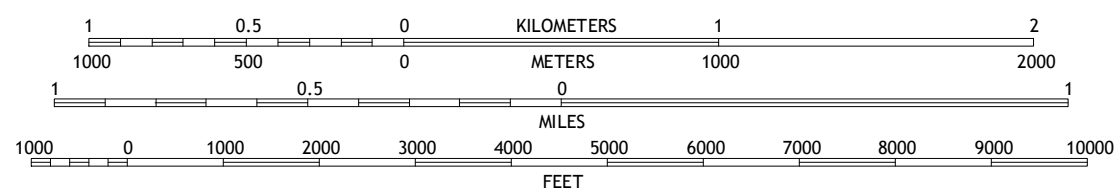
Produced by the United States Geological Survey
North American Datum of 1983 (NAD83)
World Geodetic System of 1984 (WGS84). Projection and
1 000-meter grid: Universal Transverse Mercator, Zone 10S
10 000-foot ticks: California Coordinate System of 1983 (zone 2)

This map is not a legal document. Boundaries may be generalized for this map scale. Private lands within government reservations may not be shown. Obtain permission before entering private lands.

Imagery.....	NAIP, June 2012
Roads.....	HERE, ©2013 - 2014
Names.....	GNIS, 2015
Hydrography.....	National Hydrography Dataset, 2012
Contours.....	National Elevation Dataset, 2000
Boundaries.....	Multiple sources; see metadata file 1972 - 2015
Public Land Survey System.....	BLM, 2011



SCALE 1:24 000



CONTOUR INTERVAL 40 FEET
NORTH AMERICAN VERTICAL DATUM OF 1988

This map was produced to conform with the
National Geospatial Program US Topo Product Standard, 2011.
A metadata file associated with this product is draft version 0.6.18



ROAD CLASSIFICATION



1	2	3	1 Clarksville
4		5	2 Shingle Springs
6	7	8	3 Placerville

4 Folsom SE
5 Fiddletown
6 Carbondale
7 Irish Hill
8 Amador City

ADJOINING QUADRANGLES

LATROBE, CA
2015