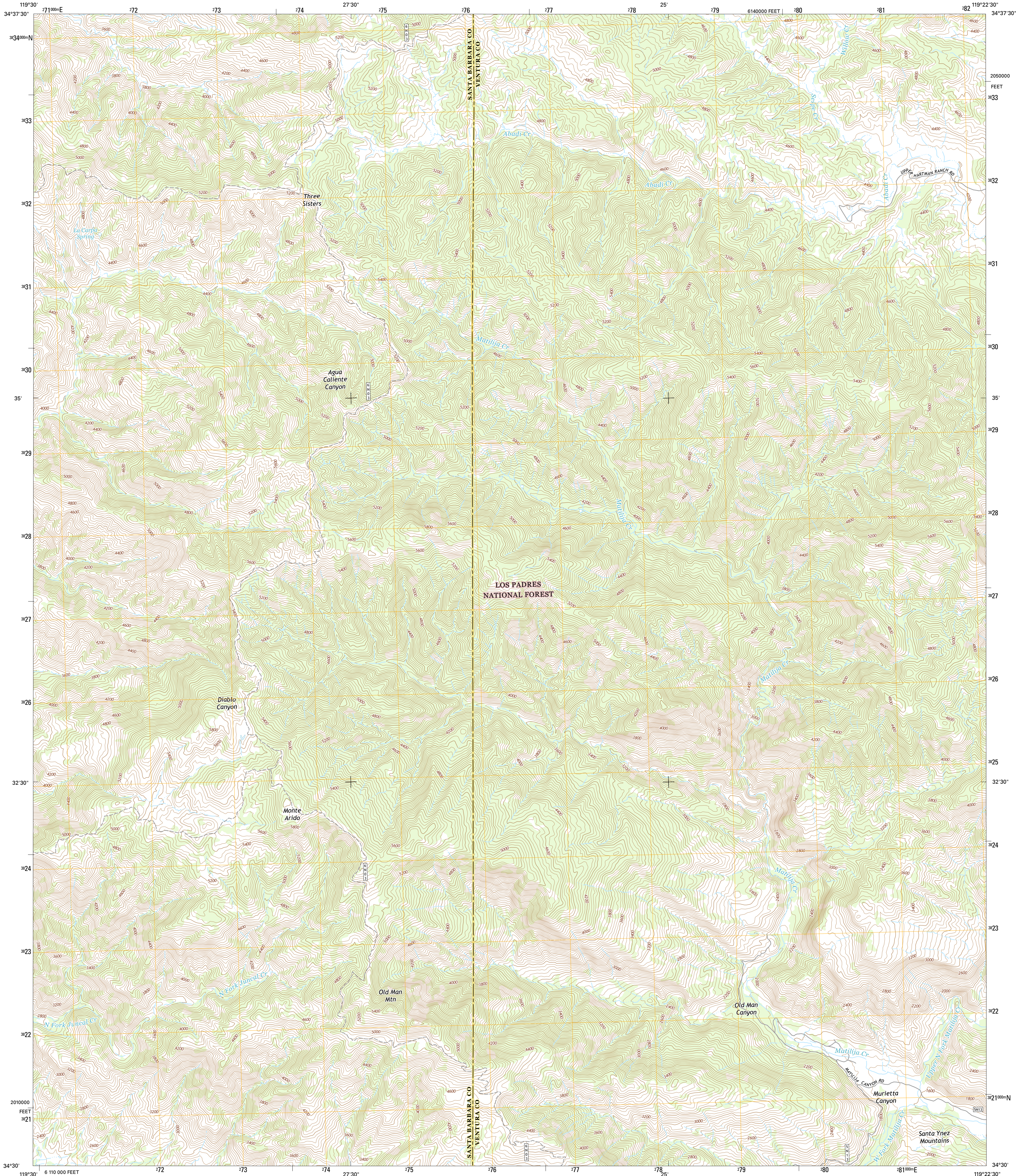




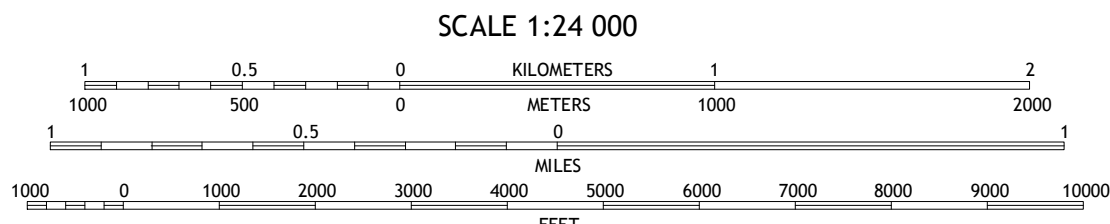
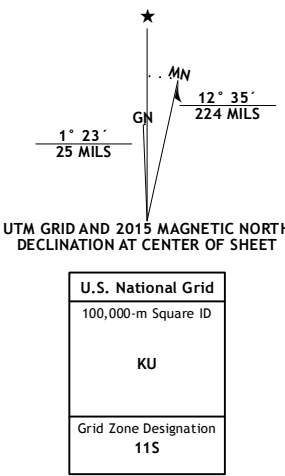
U.S. DEPARTMENT OF THE INTERIOR
U.S. GEOLOGICAL SURVEY



OLD MAN MOUNTAIN QUADRANGLE
CALIFORNIA
7.5-MINUTE SERIES



Produced by the United States Geological Survey
North American Datum of 1983 (NAD83)
World Geodetic System of 1984 (WGS84). Projection and
1 000-meter grid: Universal Transverse Mercator, Zone 11S
10 000-foot ticks: California Coordinate System of 1983 (zone 5)
This map is not a legal document. Boundaries may be
generalized for this map scale. Private lands within government
reservations may not be shown. Obtain permission before
entering private lands.
Imagery.....NAIP, May 2012
Roads within US Forest Service Lands.....HERE, ©2013 - 2014
Data with limited Forest Service updates, 2012 - 2015
Names.....GNIS, 2015
Hydrography.....National Hydrography Dataset, 2012
Contours.....National Elevation Dataset, 2004
Boundaries.....Multiple sources; see metadata file 1972 - 2015
Public Land Survey System.....BLM, 2011



CONTOUR INTERVAL 40 FEET
NORTH AMERICAN VERTICAL DATUM OF 1988
This map was produced to conform with the
National Geospatial Program US Topo Product Standard, 2011.
A metadata file associated with this product is draft version 0.6.18



ROAD CLASSIFICATION
Expressway Secondary Hwy Ramp Interstate Route FS Primary Route
Local Connector Local Road 4WD US Route FS Passenger Route State Route FS High Clearance Route
Check with local Forest Service unit for current travel conditions and restrictions.

1	2	3
4	5	6
7	8	

- 1 Madule Peak
- 2 Rancho Nuevo Creek
- 3 Reyes Peak
- 4 Hildreth Peak
- 5 Wheeler Springs
- 6 Carpinteria
- 7 White Ledge Peak
- 8 Matilija

OLD MAN MOUNTAIN, CA
2015

